

4 in. tube light

translucent LED cylinder



CONSTRUCTION

- Matte white acrylic diffuser.
- **W**—white or **S**—silver canopy, with matching cord.
- Standard mount is 8 ft. adjustable power cord. Order **XP** for extra pendant length.
- Hard stem also available, 24" standard. Order **BLA**.
- cUL listed for dry locations only.
- See page 3 for additional mount and canopy information.

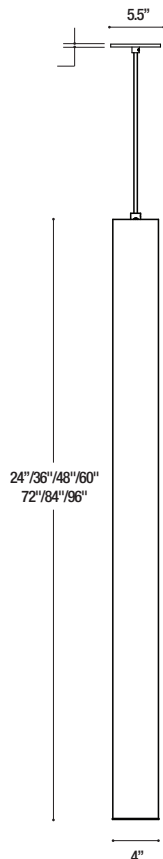
TYPE:	PROJECT:
ORDER NUMBER:	

MODEL#	FINISH	LEDS	DRIVERS	DRIVER MOUNTING
6442 —2 ft.	S —Silver	W30	D —Standard	RD —Remote Driver
6443 —3 ft.	W —White	W35	BDIM-W11	
6444 —4 ft.		W40		
6445 —5 ft.				
6446 —6 ft.				
6447 —7 ft.				
6448 —8 ft.				

Example:

6443	S	W35	D	RD
-------------	----------	------------	----------	-----------

XP —extra pendant. Cord length (inches):	
BLA —pipe mount, 24 in. standard. Additional pipe length (inches):	
XL —custom lumen reduction (specify lumens):	



MODEL	LENGTH
6442	2 ft.
6443	3 ft.
6444	4 ft.
6445	5 ft.
6446	6 ft.
6447	7 ft.
6448	8 ft.

Specify LED color:

- WHITE**
W30—White (3000° K)
W35—White (3500° K)
W40—White (4000° K)

4 in. tube light

translucent LED cylinder



WHITE LEDS

- 90 CRI minimum.
- **W30** (3000K), **W35** (3500K), and **W40** (4000K) white color temperatures.
- Drivers are programmable constant current, 0–10V, 1% dimming, standard.

DIMMING

- **D**—standard supplied driver. 0–10V, programmable, 1% dimming, 120/277V, 50/60 Hz.
- **BDIM-W11**—Lutron EcoSystem LED14 Series, 1% dimming, fade-to-off.

CUSTOM LUMEN OUTPUT REDUCTION

Factory set custom reduced-lumen output driver configuration. Order **XL**. Specify lumens.

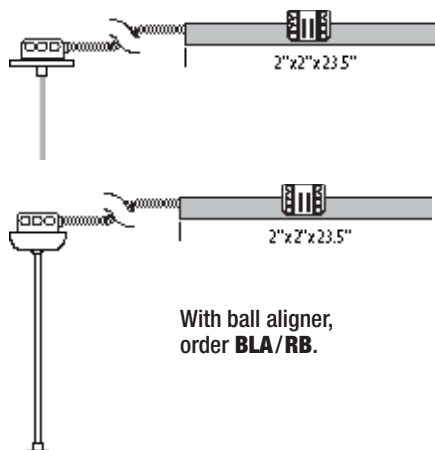
WATTS

MODEL	LENGTH	WATTS	DELIVERED LUMENS
6442	2 ft.	19	2,014
6443	3 ft.	29	3,013
6444	4 ft.	40	4,012
6445	5 ft.	48	5,027
6446	6 ft.	58*	6,026
6447	7 ft.	69*	7,025
6448	8 ft.	80*	8,024

*Two separately powered circuits per fixture

REMOTE DRIVER

Install driver enclosure (supplied) maximum 18 ft. from fixture; must remain accessible. Order **RD**.

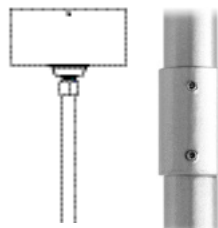


NOTE: Multiple drivers must be mounted no less than 4 inches apart side-by-side, and 1 inch apart end-to-end, to avoid overheating.

PIPE MOUNT

Order **BLA** mount for 3/8" IPS pipe. 24" supplied, standard. Additional length must be specified. Includes ball aligner canopy rated for 75 lbs., and mounts to standard J-boxes.

Not for windy locations. Pipe longer than 8 ft. will be shipped in two pieces—one 8 ft. section plus a second section for the balance—supplied with a painted, threaded pipe coupler, with set screws. Ball aligner. Order **BLA**.



DOWNLIGHT

- 4" downlight
- 12.7W max.
- 1000 lumens
- Available with Narrow, Medium, or Wide Distribution
- Order **B4NLED** (Narrow), **B4MLED** (Medium), **B4WLED** (Wide)

ACRYLIC DIFFUSER CLEANING

WARNING: Do not clean with ammonia based cleaners (e.g. Windex®). Use only water or cleaners specifically formulated for cleaning plastics.

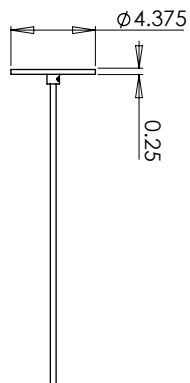
4 in. tube light

translucent LED cylinder

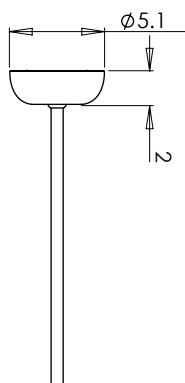


REMOTE DRIVE OPTION - RD

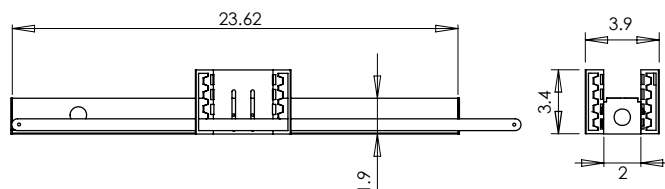
Pendant



Pipe Mount



Remote Driver Housing



Adjustable bar hanger brackets are removable.