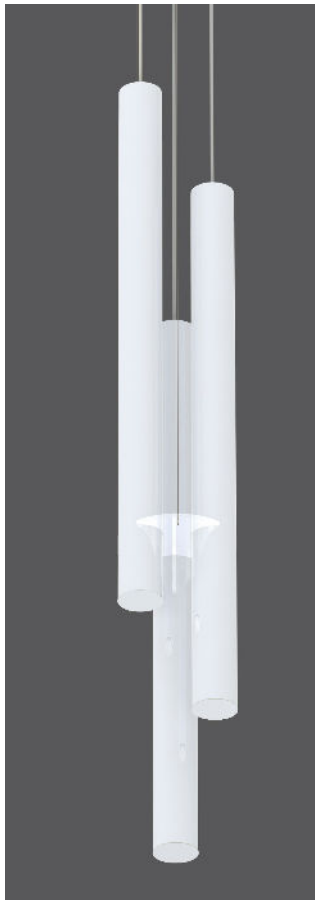


4 in. tube light cluster

translucent LED 3-tube cluster



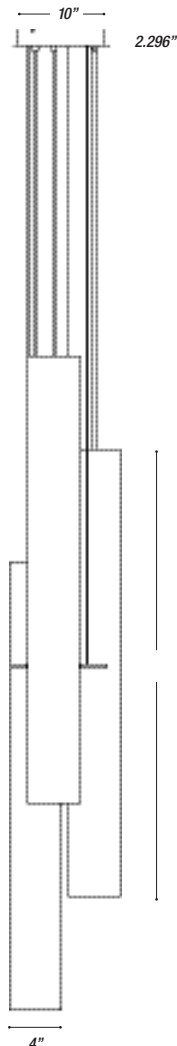
CONSTRUCTION

- Matte white acrylic diffuser.
- Clear acrylic collar maintains tube alignment and prevents inter-tube collision. (See back page for details.)
- **W**—white, **S**—silver, or **K**—black, with matching cord.

- Standard mount is 8 ft. adjustable aircraft cable power cord. Order **XP** for extra pendant length.
- Hard stem also available. Order **BLA**.
- cUL listed for dry locations only.
- See page 3 for additional mount and canopy information.

TYPE: P1	PROJECT: Bell Bank Tower PH2
ORDER NUMBER: 1602558	

MODEL#	LENGTHS	FINISH	LEDS	DRIVERS	DRIVER MOUNTING	SPECIAL
644LC	333 —3/3/3 ft. 334 —3/3/4 ft. 444 —4/4/4 ft.	S —Silver W —White K —Black	W30 W35 W40	D —Standard BDIM-W11	RD Remote Driver	SP0078 —Delray 4inx3ft tube light cluster silver W35K standard dimming remote driver special 4000 lm per tube. (12000lm- 3 light cluster)
<i>Example:</i>						
644LC	333	S	W35	D	RD	SP0078



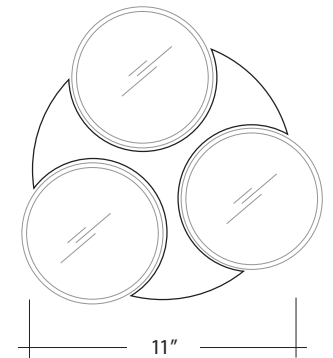
XP —extra pendant. Cord length (inches):	
BLA —pipe mount, 24 in. standard. Add'l. pipe length	
XL —custom lumen reduction (specify lumens):	

Specify LED color:

- WHITE**
- W30**—White (3000° K)
- W35**—White (3500° K)
- W40**—White (4000° K)

TUBE COLLAR

Clear acrylic collar maintains alignment and spacing of tubes.



4 in. tube light cluster

translucent LED 3-tube cluster



WHITE LEDS

- 90 CRI minimum.
- **W30** (3000K), **W35** (3500K), and **W40** (4000K) white color temperatures.
- Drivers are programmable constant current, 0–10V, 1% dimming, standard.
- White LED standard and dimming drivers mounted inside

CUSTOM LUMEN OUTPUT REDUCTION

Factory set custom reduced-lumen output driver configuration
Order XL. Specify lumens.

DIMMING

- **D**—standard supplied driver. 0–10V, programmable, 1% dimming, 120/277V, 50/60 Hz.
- **BDIM-W11**—Lutron EcoSystem LED14 Series, 1% dimming, fade-to-off.
- Order RD for remote in accessible ceilings or panels

EMERGENCY

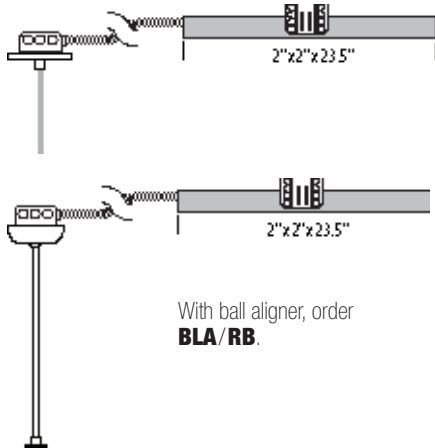
Emergency not available. If EM is required, use inverter (by others).

WATTS

LENGTH	WATTS PER TUBE	DELIVERED LUMENS PER TUBE
3 ft.	44	4,000
4 ft.	60	5,455

REMOTE DRIVER

Install driver enclosure (supplied) maximum 18 ft. from fixture; must remain accessible. Order **RD**.

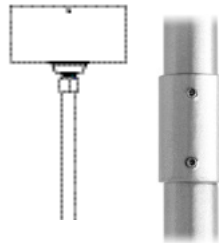


NOTE: Multiple drivers must be mounted no less than 4 inches apart side-by-side, and 1 inch apart end-to-end, to avoid overheating.

PIPE MOUNT

Order **BLA** mount for 3/8" IPS pipe. 24" supplied, standard. Additional length must be specified. Includes ball aligner canopy rated for 75 lbs., and mounts to standard J-boxes.

Not for windy locations. Pipe longer than 8 ft. will be shipped in two pieces—one 8 ft. section plus a second section for the balance—supplied with a painted, threaded pipe coupler, with set screws. Ball aligner. Order **BLA**.



ACRYLIC DIFFUSER CLEANING

WARNING: Do not clean with ammonia based cleaners (e.g. Windex®). Use only water or cleaners specifically formulated for cleaning plastics.

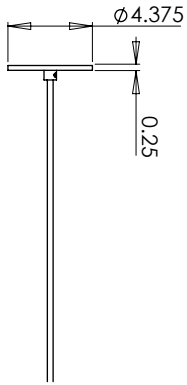
4 in. tube light cluster

translucent LED 3-tube cluster

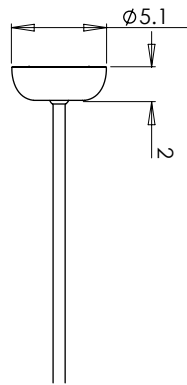


REMOTE DRIVE OPTION – RD

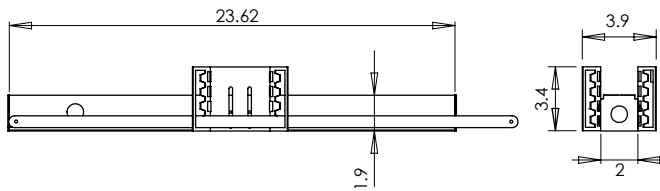
Pendant



Pipe Mount



Remote Driver Housing



Adjustable bar hanger brackets are removable.