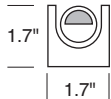
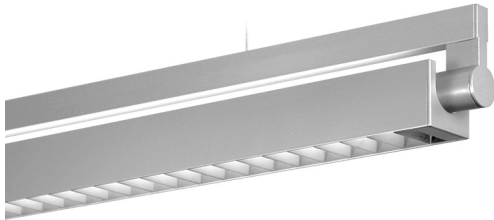


# Stick SLT4 trim 20

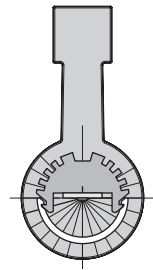
adjustable LED single lamp pendant with direct/indirect square louver trim



**TRIM 20**  
Direct/Indirect Square  
Trim with White  
Louvers

## CONSTRUCTION

- Single lamp 2, 3, 4, 6 or 8 ft. inline pendant fixture that may be installed stand-alone or connected to additional Stick sections.
- Each section requires its own power feed.
- Matte anodized extruded aluminum driver housing. 7/8" opening for direct conduit feed (not intended for J-box mount).
- 8 ft. gray adjustable power cord and aircraft cables, with push button grippers supplied, standard.
- Specify XP for additional length (25 ft. max.).
- cUL listed for damp locations.



Lamp rotates 270°, in 15° stepped increments, to direct light where needed.

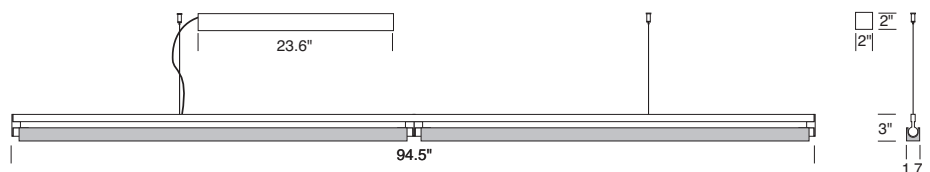
<b>TYPE:</b>	<b>PROJECT:</b>
<b>ORDER NUMBER:</b>	

MODEL#	LENGTH (FT.)	HO/LO	LEDS	DIMMING	EMERGENCY	OPTION	TRIM	TRIM FINISHES*	
SLT4—Stand-Alone	8	LO	W30	D—Standard	EM	SFBS	20	BW—Barn Wood	DC—Dark Cherry
SLTR4—Right	6	HO	W35	BDIM-W11		SFBW		CB—Carbon Fiber	KL—Khaki Leather
SLTM4—Middle	4		W40			SLRD		ES—Espresso	BR—Bronze
SLTL4—Left	3					SLRDTB		HK—Honey Oak	GF—Gold Leaf
	2							M—Maple	CO—Copper
								SD—Silver Driftwood	GT—Gold Textured
								SA—Stainless Steel	
Example:									* Trim only. For swatches, see page 4.
SLT4	8	HO	W35	D		SLRD	20	BW	

<b>XP</b> —Extra power cord (in inches, 25 ft. max.):		<b>S100P</b> —J-box cover	
<b>XL</b> —custom lumen reduction (specify lumens):			

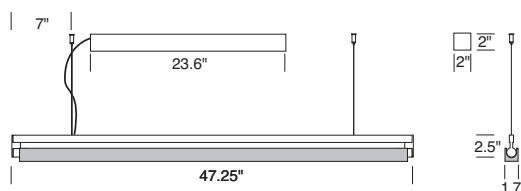
**MODEL**  
SLT48LO/HO  
SLT46LO/HO

**LENGTH**  
8 ft.  
6 ft.



**MODEL**  
SLT44LO/HO  
SLT43LO/HO  
SLT42LO/HO

**LENGTH**  
4 ft.  
3 ft.  
2 ft.



# Stick SLT4 trim 20

adjustable LED single lamp pendant with direct/indirect square louver trim



## WHITE LEDS

Samsung tight bin chips on aluminum clad boards. 90 CRI.  
Specify color: W30–3000° Kelvin, W35–3500° Kelvin,  
or W40–4000° Kelvin color temperature.

## DIMMING

- **D**—standard supplied driver. 0–10V, programmable, 1% dimming, 120/277V, 50/60 Hz.
- **BDIM-W11**—Lutron EcoSystem LED14 Series, 1% dimming, fade-to-off.

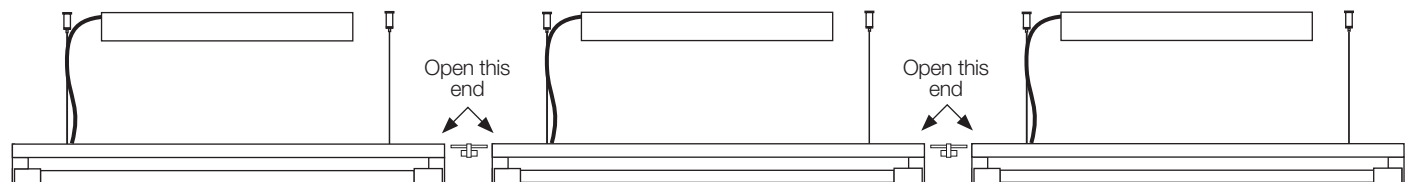
## CUSTOM LUMEN OUTPUT REDUCTION

Factory set custom reduced-lumen output driver configuration.  
Order **XL**. Specify lumens.

## WATTS / LUMENS / EFFICACY

LENGTH	WATTS	DELIVERED LUMENS	EFFICACY
2 ft. <b>LO</b>	7	722	103 LPW
2 ft. <b>HO</b>	14	1,443	103 LPW
3 ft. <b>LO</b>	10.5	1,082	103 LPW
3 ft. <b>HO</b>	21	2,165	103 LPW
4 ft. <b>LO</b>	14	1,443	103 LPW
4 ft. <b>HO</b>	28	2,886	103 LPW

## CONNECTING SECTIONS



### RIGHT

SLTR open on right side of cord

### MIDDLE

SLTM open on both ends

### LEFT

SLTL open on left side of cord

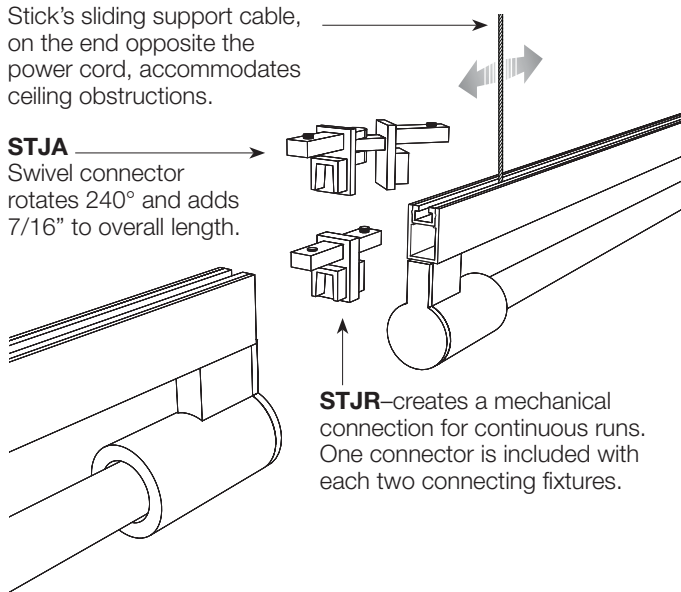
	LENGTH		LENGTH		LENGTH
SLTR48LO/HO	8 ft.	SLTM48LO/HO	8 ft.	SLTL48LO/HO	8 ft.
SLTR46LO/HO	6 ft.	SLTM46LO/HO	6 ft.	SLTL46LO/HO	6 ft.
SLTR44LO/HO	4 ft.	SLTM44LO/HO	4 ft.	SLTL44LO/HO	4 ft.
SLTR43LO/HO	3 ft.	SLTM43LO/HO	3 ft.	SLTL43LO/HO	3 ft.
SLTR42LO/HO	2 ft.	SLTM42LO/HO	2 ft.	SLTL42LO/HO	2 ft.

## CONNECTORS

Stick's sliding support cable, on the end opposite the power cord, accommodates ceiling obstructions.

### STJA

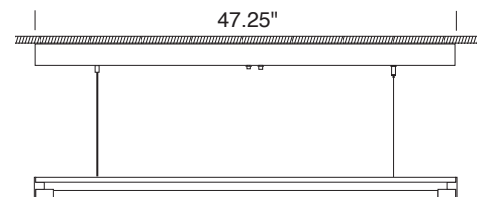
Swivel connector rotates 240° and adds 7/16" to overall length.



**STJR**—creates a mechanical connection for continuous runs. One connector is included with each two connecting fixtures.

## EMERGENCY

For 4' through 8' fixtures only. Battery pack provides 10W for 90 minutes. Adds additional length to driver housing.



## AIRCRAFT CABLE

**NOTE:** Not recommended for outdoor use, where fixture will be exposed to water, or subject to wind oscillation. Avoid use near HVAC vents and in environments with corrosive chemical vapors, such as swimming pools.

# Stick SLT4 trim 20

adjustable LED single lamp pendant with direct/indirect square louver trim

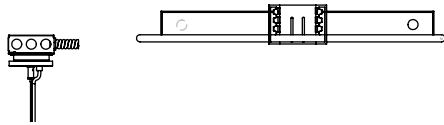


## REMOTE DRIVERS

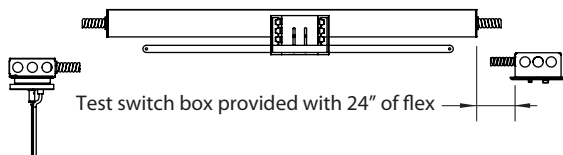
Drivers must be accessible after installation. Multiple driver housings must be mounted no closer than 4" apart side-by-side, or 1" apart end-to-end, to avoid overheating. Driver to canopy distance should not exceed 100 ft., using 10 AWG wire.

**SLRD:** Standard remote housing has no bar hangers and mounts to structure with screws. Dimensions: 24" length, 2.36" height, 2.65" width.

**SLRDTB:** Remote housing for T-bar ceiling includes bar hangers. Dimensions: 27" length, 3.4" height, 4.25" width.

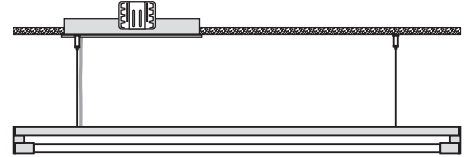


**EM/SLRDTB:** Remote **EM** housing for T-bar ceiling includes bar hangers and remote test switch. Dimensions: 36" length, 3.4" height, 4.25" width.



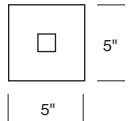
## FLUSH MOUNT

22" flush mount ballast housing, for joist mount rough-in. Order **SFBS** (silver) or **SFBW** (white).



## OPTIONAL J-BOX COVER

Cover plate mounts to maximum 4" square J-box. Ballast housing mounts to wall on top of cover plate, which may be painted to match ceiling or wall, and includes two mounting spacers to offset cover thickness. Order **S100P**.

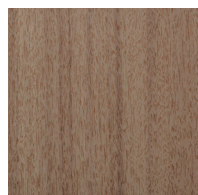


# Stick SLT4 trim 20

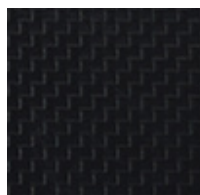
adjustable LED single lamp pendant with direct/indirect square louver trim



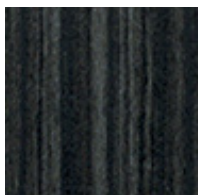
## PREMIUM TEXTURED FINISHES



**BW**—Barnwood



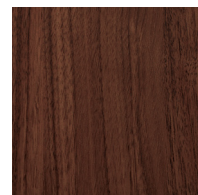
**CB**—Carbon Fiber



**ES**—Espresso



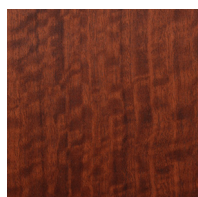
**HK**—Honey Oak



**M**—Maple



**SD**—Silver Driftwood

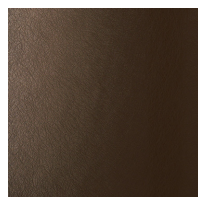


**DC**—Dark Cherry



**KL**—Khaki Leather

## PREMIUM METALLIC FINISHES



**BR**—Bronze



**GF**—Gold Leaf



**CO**—Copper



**GT**—Gold Textured



**SA**—Stainless Steel