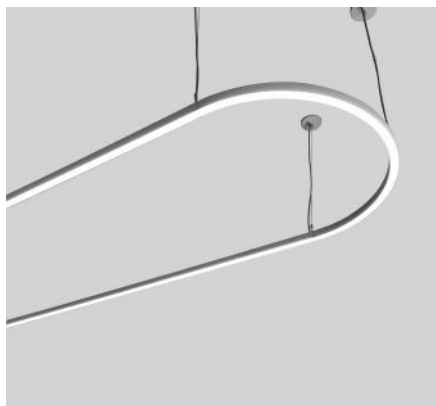


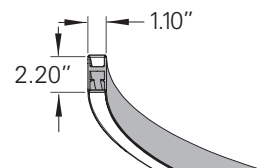
DOS curve

LED direct/indirect circular & linear modules with opal acrylic lenses



CONSTRUCTION

- Extruded aluminum outer housing
- Direct/indirect white frosted acrylic diffuser.
- 8 ft. gray or white 18 AWG adjustable power cord and AC cables. Push button grippers supplied, standard. Specify **XP** for additional length (25 ft. max.).
- Drivers and DMX module installed in surface mount canopy. For remote driver installation, see page 2.
- ETL listed for dry locations only.



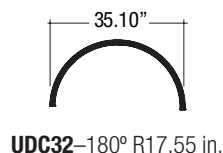
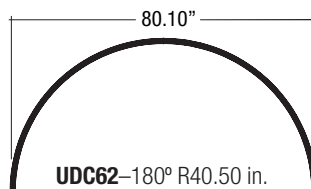
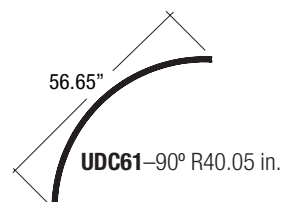
TYPE:	PROJECT:
ORDER NUMBER:	

CURVED MODEL#	LINEAR MODEL#	FINISH	LEDS	MOUNT STYLE*	DIMMING*	OPTIONS*
UDC31 —90° R17 in. UDC61 —90° R37 in. UDC43 —120° R22 in. UDC32 —180° R17 in. UDC62 —180° R37 in.	UDLC2 —2 ft. UDLC3 —3 ft. UDLC4 —4 ft. UDLC5 —5 ft. UDLC6 —6 ft. UDLC8 —8 ft.	S —Silver W —White K —Black BW —Barn Wood CB —Carbon Fiber ES —Espresso HK —Honey Oak M —Maple SD —Silver Driftwood DC —Dark Cherry KL —Khaki Leather BR —Bronze GF —Gold Leaf CO —Copper GT —Gold Textured SA —Stainless Steel	W30 W35 W40 Red Blue SQ —RGB	R —Remote EM —Emergency	D BDIM-W11	SS DO
Example:						
UDC31 × 2	UDLC4 × 2	K	W30	R	D	DO

BTRAXW —Traxon Light Drive (enter quantity)	XP —Extra power cord (in inches, 25 ft. max.)
XL —custom lumen reduction (specify lumens)	UDCLEND —end cap (enter quantity):

*For details, please see p. 2.

MODULES



UDLC2—2 ft. (23.65")

UDLC3—3 ft. (35.00")

UDLC4—4 ft. (46.40")

UDLC5—5 ft. (57.75")

UDLC6—6 ft. (69.15")

UDLC8—8 ft. (91.90")

DOS curve

LED direct/indirect circular & linear modules with opal acrylic lenses



WHITE LEDS

Nichia Corp. NFSL757 tight bin chips on aluminum boards. 90 CRI. Specify color: W30–3000° Kelvin, W35–3500° Kelvin, or W40–4000° Kelvin.

DIMMING

- **D**—standard supplied driver. 0–10V, programmable, 1% dimming, 120/277V, 50/60 Hz.
- **BDIM-W11**—Lutron EcoSystem LED14 Series, 1% dimming, fade-to-off. Remote (**SR, CR, NCR**) install only.

WATTS / mA / LUMENS*

CURVED MODULES	mA	WATTS	DELIVERED LUMENS
UDC31 —90° R17 in.	600	24	2,045
UDC61 —90° R37 in.	1,200	49	4,100
UDC43 —120° R22 in.	1,100	43	3,630
UDC32 —180° R17 in.	1,200	44	4,100
UDC62 —180° R37 in.	2,400	98	8,200
LINEAR MODULES	mA	WATTS	DELIVERED LUMENS
UDLC2 —2 ft. (23.65")	430	20	1,732
UDLC3 —3 ft. (35.00")	650	30	2,585
UDLC4 —4 ft. (46.40")	860	40	3,465
UDLC6 —6 ft. (69.15")	1,300	60	5,170
UDLC8 —8 ft. (91.90")	1,700	80	6,930

***DO** option reduces mA, watts, and delivered lumens by half.

REMOTE DRIVERS

Driver must be accessible after installation. For suspended and hard lid ceilings with access panels. Canopy mounts to mud ring attached to J-box.

NOTE: Multiple drivers must be mounted no less than 4 inches apart side-by-side, and 1 inch apart end-to-end, to avoid overheating.

Standard pendant length: 8 ft. Specify XP for extra pendant.

Maximum canopy to fixture distance: 25 ft. Maximum canopy to driver distance: 100 ft. (with 10 AWG wire).



Remote Driver Canopy
3.80 x 0.45 in.

OPTIONAL DMX CONTROLLER

BTRAXW—white faceplate

- Standalone, wall-mounted (12V power supply included)
DMX controller for RGBW LED that provides direct access to fixtures.
- Tune color and brightness with the Light-Drive wheel.
- Fully dimmable white mode button.
- Go to <https://www.nicolaudie.com/en/stick-de3.htm> for details.

CUSTOM LUMEN OUTPUT REDUCTION

Factory set custom reduced-lumen output driver configuration. Order **XL**. Specify lumens.

SEPARATE SWITCHING

Direct and indirect LEDs may be wired separately. The quantity of drivers, quantity of feed points, and size of driver box (36")* may increase. Order **SS**.

DOWNLIGHT ONLY

If no uplight is required, order **DO**. Only downlight LEDs will be provided. Note: this option reduces mA, watts, and delivered lumens by half.

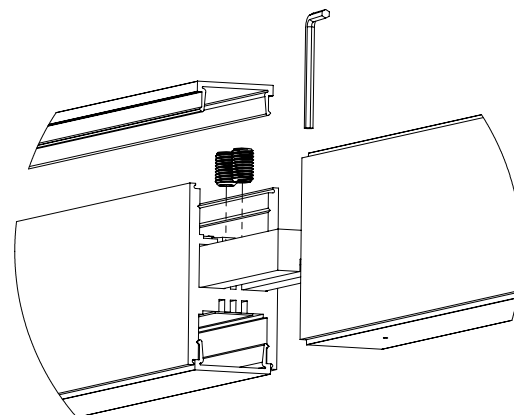


END CAP

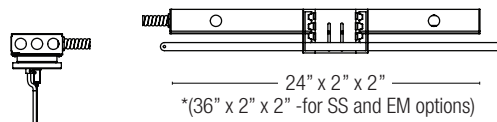
To terminate end modules only.
Order **UDCLEND**.

JOINER

Joins two modules in the field with 674200JOIN.



R — Remote driver installation



EM — Emergency. Battery pack provides 10W for 90 minutes. Remote install only. Red driver light and test switch mounted in handy box installed at ceiling. Increases remote driver size to 36" length.

AIRCRAFT CABLE

NOTE: Not recommended for outdoor use, where fixture will be exposed to water, or subject to wind oscillation. Avoid use near HVAC vents and in environments with corrosive chemical vapors, such as swimming pools.

ACRYLIC DIFFUSER CLEANING

WARNING: Do not clean with ammonia based cleaners (e.g. Windex®). Use only water or cleaners specifically formulated for cleaning plastics.

DOS curve

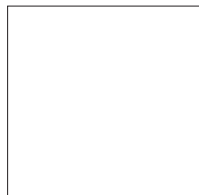
LED direct/indirect circular & linear modules with opal acrylic lenses



STANDARD PAINT FINISHES



S-Silver

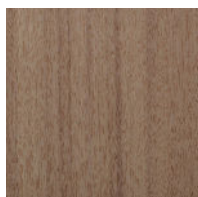


W-White

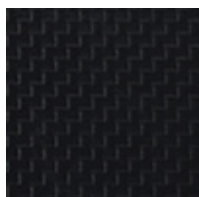


K-Black

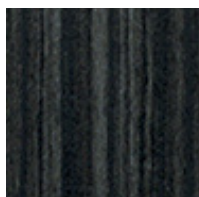
PREMIUM TEXTURED FINISHES



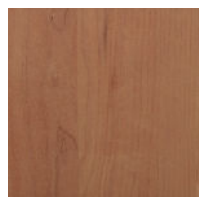
BW-Barnwood



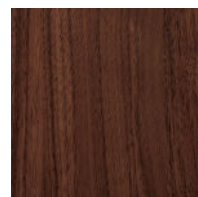
CB-Carbon Fiber



ES-Espresso



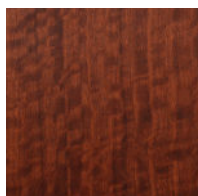
HK-Honey Oak



M-Maple



SD-Silver Driftwood

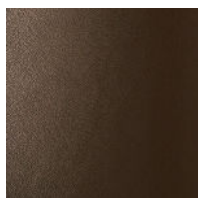


DC-Dark Cherry

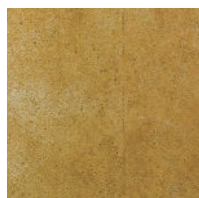


KL-Khaki Leather

PREMIUM METALLIC FINISHES



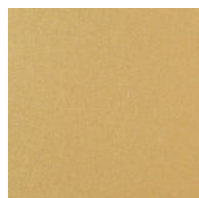
BR-Bronze



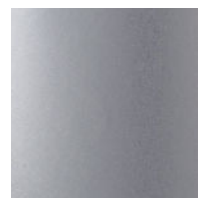
GF-Gold Leaf



CO-Copper



GT-Gold Textured



SA-Stainless Steel

TEXTURED FINISHES – CANOPY AND POWER CORD COLORS

Specify Silver, White, Black or RAL color for canopy.
Also specify Gray, White or Black power cord.

ACRYLIC DIFFUSER CLEANING

WARNING: Do not clean with ammonia based cleaners (e.g. Windex®). Use only water or cleaners specifically formulated for cleaning plastics.