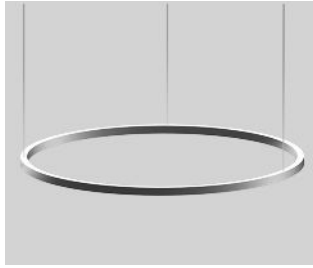


# Uno circles, indirect

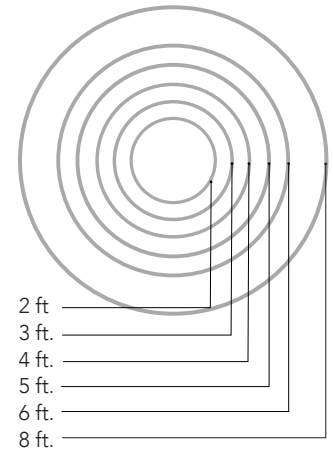
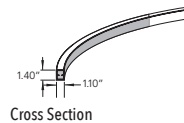
indirect LED circular pendant with frosted acrylic diffuser



## CONSTRUCTION

- Extruded aluminum outer housing
- Direct frosted acrylic lens.

- Suspended with field-adjustable aircraft cable, with push-button glider. 8 ft. 18 AWG power cord. Push button grippers supplied, standard. Specify **XP** for additional length. (25 ft. maximum.)
- Default finish/power cord pairings are silver/gray, white/white, black/black.
- For RAL colors, power cord color must be specified.
- For differing fixture/canopy colors, please consult factory.
- Drivers and DMX module remotely installed in surface mount canopy. For remote driver installation, see page 2.
- Drivers are universal voltage (120–277V).
- Nominal diameters, right. For actual diameters (in.), see chart p. 2.
- ETL listed per UL and CSA standards.



<b>TYPE:</b>	<b>PROJECT:</b>
<b>ORDER NUMBER:</b>	

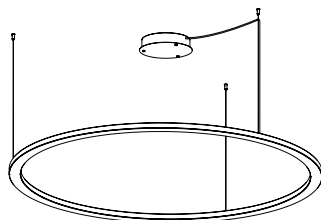
MODEL#	FINISH	LEDS	MOUNT STYLE	DIMMING	OPTION
<b>UiC2</b> -2 ft.	<b>S</b> -Silver	<b>W30</b>	<b>S</b> -Separate	<b>D</b> -Standard	<b>SS</b>
<b>UiC3</b> -3 ft.	<b>W</b> -White	<b>W35</b>	<b>SR</b> -Separate Remote	<b>BDIM-W11</b>	<b>EM</b>
<b>UiC4</b> -4 ft.	<b>K</b> -Black	<b>W40</b>	<b>C</b> -Central	<b>DMX</b>	<b>TB</b>
<b>UiC5</b> -5 ft.	<b>CC</b> -RAL Color*	<b>RGBW</b> -color + 3500° K white	<b>CR</b> -Central Remote	<b>DA</b> -DALI	<b>DO</b>
<b>UiC6</b> -6 ft.			<b>NCR</b> -Nexus CR		
<b>UiC8</b> -8 ft.					

Example:

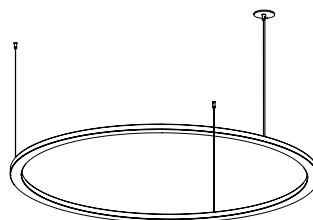
<b>UiC6</b>	<b>CB</b>	<b>W35</b>	<b>SR</b>	<b>D</b>	<b>EM, TB</b>
-------------	-----------	------------	-----------	----------	---------------

<b>BDMXCON-W</b> - white faceplate (enter quantity):	<b>XP</b> -Extra power cord (in inches, 25 ft. max.):
<b>BDMXCON-B</b> - black faceplate (enter quantity):	Specify <b>canopy</b> finish (silver, white, black):
<b>EB</b> - Earthquake Bracing Kit (enter quantity):	Specify power cord color (gray, white, black):
<b>XL</b> - custom lumen reduction (specify lumens):	*Specify RAL color number:

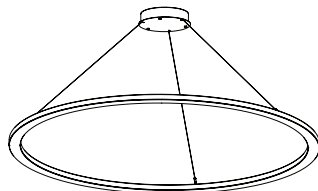
## MOUNT STYLES



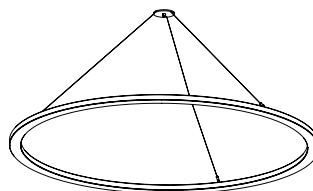
**S** - Separate



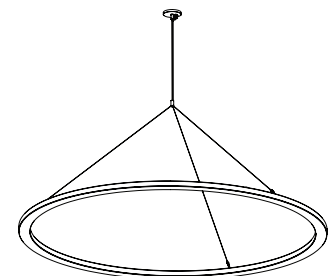
**SR** - Separate Remote



**C** - Central



**CR** - Central Remote



**NCR** - Nexus Central Remote

## CANOPIES

- **S, C**-standard canopy (10" x 2.25") Mounts to all standard J-boxes.
- **SR, CR, NCR**-remote canopy (3" x 0.45") Mounts to 3" mudring (by others).

# Uno circles, indirect

LED indirect circular pendant with frosted acrylic diffuser



## WHITE LEDS

Nichia Corp. NFSL757 tight bin chips on aluminum boards. 90 CRI. Specify color: W30–3000° Kelvin, W35–3500° Kelvin, or W40–4000° Kelvin.

## CUSTOM LUMEN OUTPUT REDUCTION

Factory set custom reduced-lumen output driver configuration. Order **XL**. Specify lumens. Static white only.

## COLOR LEDS

**RGBW** with 3500° K white. Includes RGBW interface. Optional DMX controller also available. (See below.)

## DIMMING

- **D**—standard supplied driver. 0–10V, programmable, 1% dimming, 120/277V, 50/60 Hz.
- **BDIM-W11**—Lutron EcoSystem LED14 Series, 1% dimming, fade-to-off. Remote (**SR**, **CR**, **NCR**) install only.
- **DA**—DALI 1% dimming, fade-to-off. 120–277V, 50/60 Hz.
- **DMX**—for both white and RGBW LEDs, 0.1% dimming fade-to-off. 120–277V, 50/60Hz.

## DIAMETER / WATTS / LUMENS / DRIVERS REQUIRED / WEIGHT

DIAMETER Nominal (Actual)	WATTS		DELIVERED LUMENS		DRIVERS REQUIRED		WEIGHT (lb.)
	White	RGBW	White	RGBW	White	RGBW	
2 ft. (25.10 in.)	26	Consult Factory	2,166	Consult Factory	1	Consult Factory	7
3 ft. (35.10 in.)	39		3,250		1		14
4 ft. (45.10 in.)	52		4,333		2		16
5 ft. (65.10 in.)	65		5,416		2		18
6 ft. (80.10 in.)	78		6,500		2		20
8 ft. (95.10 in.)	104		8,666		2		30

## REMOTE DRIVERS

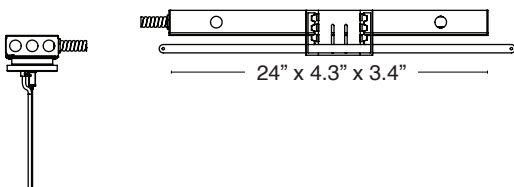
For suspended and hard lid ceilings with access panels. Canopy mounts to mud ring attached to J-box. Must be accessible after installation.

Standard pendant length: 8 ft. Specify **XP** for extra pendant. Maximum canopy to fixture distance: 25 ft. Maximum canopy to driver distance: 100 ft. (with 10 AWG wire).



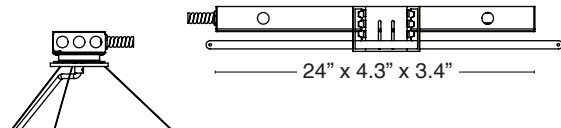
Remote Driver Canopy  
3.8 x 0.45 in.

**SR** – Separate mount driver installation. **TB**–T-Bar install shown.

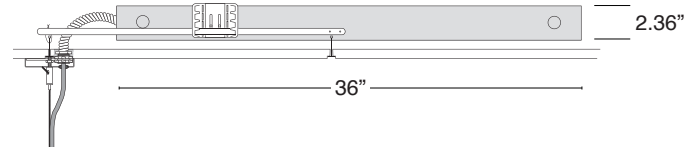


**NOTE:** Multiple drivers must be mounted no less than four inches apart side-by-side, and one inch apart end-to-end, to prevent overheating.

**CR** – Central mount remote driver installation. **TB**–T-Bar install shown.



**EM** – Emergency. **TB**–T-bar install shown, below. Battery pack provides 10W for 90 minutes. Remote install only. Red driver light and test switch mounted in handy box installed at ceiling.



## OPTIONAL DMX CONTROLLER

- Standalone, wall-mounted DMX controller for RGBW LED that provides direct access to fixtures. Power supply included.
  - Tune color hue with sensitive wheel. Saturation and brightness control. On/off switch.
  - See <https://www.nicolaudie.com/en/stick-de3.htm> for details.
- Order separately, either **BDMXCON-W**—white faceplate or **BDMXCON-B**—black faceplate.

## AIRCRAFT CABLE

**NOTE:** Not recommended for outdoor use, where fixture will be exposed to water, or subject to wind oscillation. Avoid use near HVAC vents and in environments with corrosive chemical vapors, such as swimming pools.

## ACRYLIC DIFFUSER CLEANING

**WARNING:** Do not clean with ammonia based cleaners (e.g. Windex®). Use only water or cleaners specifically formulated for cleaning plastics.

# Uno circles, direct

LED indirect circular pendant with frosted acrylic diffuser



## PAINT FINISHES



S-Silver



W-white

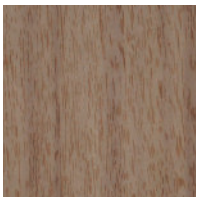


K-Black

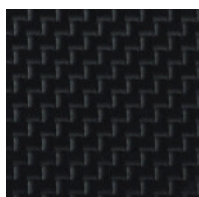


CC-XXXX RAL Color

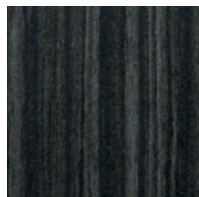
## TEXTURED FINISHES



BW-Barnwood



CB-Carbon Fiber



ES-Espresso



HK-Honey Oak

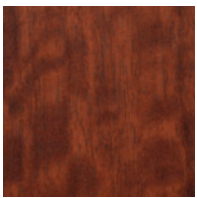


M-Maple



SD-Silver Driftwood

## PREMIUM TEXTURED FINISHES

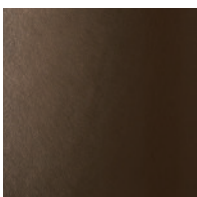


DC-Dark Cherry

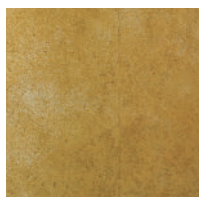


KL-Khaki Leather

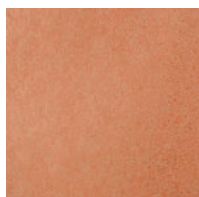
## METALLIC FINISHES



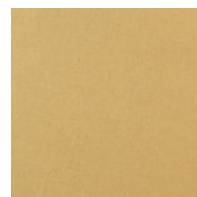
BR-Bronze



GF-Gold Leaf



CO-Copper



GT-Gold Textured



SA-Stainless Steel

### TEXTURED FINISHES - CANOPY AND POWER CORD COLORS

Specify Silver, White, Black or RAL color for canopy.  
Also specify Gray, White or Black power cord.

### ACRYLIC DIFFUSER CLEANING

**WARNING:** Do not clean with ammonia based cleaners (e.g. Windex®). Use only water or cleaners specifically formulated for cleaning plastics.