



LED LINEAR



UNO • DOS • MEDIA • COMPLETA



Linear LED

Delray's family of 1-inch, low profile LED linear strip lights feature 90 CRI Nichia chips, with rigorous binning to ensure consistent 3000, 3500 and 4000°K color temperatures.

There are four models offered; each with its own unique light distribution pattern. Uno provides direct or indirect light, while Dos is both direct *and* indirect. Media supplies a wider beam, with more upper zone illumination, while Completa is a direct downlight.

Both Media and Completa are available in pendant and surface models, and may be configured into square and rectangular chandeliers.

Uno and Dos are also available in a circular version, pairing well with their linear counterparts; sharing housing and lens materials, as well as LED and driver options.



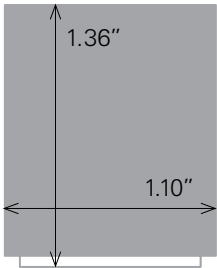
Uno direct or indirect



Uno linear LED fixtures may be installed direct (downlight) or indirect (uplight). Uno’s housing is extruded aluminum, the single aperture diffused with a frosted white DR acrylic lens. Uno is available in stand-alone lengths of 2, 3, 4, 6 and 8 feet. Connectors may also be used to join individual fixtures into continuous, unbroken runs of light.

Uno is offered with single-color red or blue LEDs, RGB/RGBW with DMX512 interface, or with white 90 CRI Nichia LED chips, which are available in 3000, 3500, and 4000° K color temperatures. Dimming, EM, and RGB/RGBW control options also available. (See last page.)

Suspended with field-adjustable aircraft cables, Uno fixtures may be installed in hard lid or T-bar ceilings. cUL listed for dry locations.



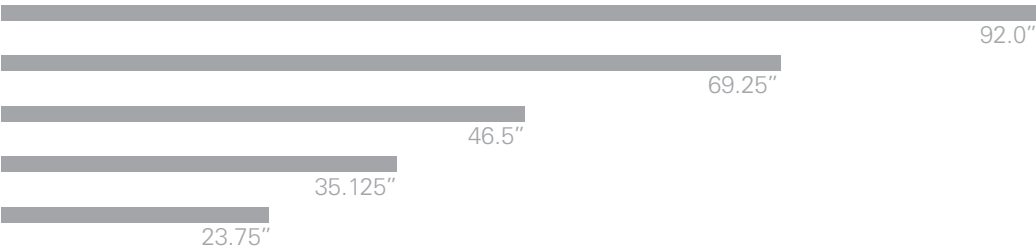
Actual Size

Direct PENDANT	Indirect PENDANT	SURFACE	Length	Lumens	Watts
UL2	UIL2	ULS2	2 ft.	866	10
UL3	UIL3	ULS3	3 ft.	1,293	15
UL4	UIL4	ULS4	4 ft.	1,733	20
UL6	UIL6	ULS6	6 ft.	2,585	30
UL8	UIL8	ULS8	8 ft.	3,465	40

PENDANT standard



SURFACE



Remote Driver Canopy
3.8 x 0.45 in.





DOS direct & indirect

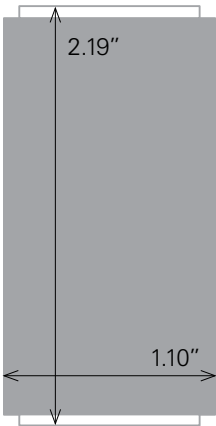


Dos linear fixtures feature direct (downlight) and indirect (uplight) apertures. Also constructed of an extruded aluminum housing, with frosted white DR acrylic lenses, they’re also available in stand-alone lengths of 2, 3, 4, 6 and 8 feet. Individual fixtures may also be joined with connectors into continuous, unbroken runs of light. Separate switching is standard.

Dos is also offered with single-color red or blue LEDs, RGB/RBGW with DMX512 interface, or with white 90 CRI Nichia LED chips, which are available in 3000, 3500, and 4000° K color temperatures. (See last page.)

Dos dual color fixtures may be ordered with one color up, a different color down, with separate switching. LEDs of all colors may be installed in either the direct or indirect apertures.

Suspended with field-adjustable aircraft cables, Dos fixtures may be installed in hard lid or T-bar ceilings. cUL listed for dry locations.



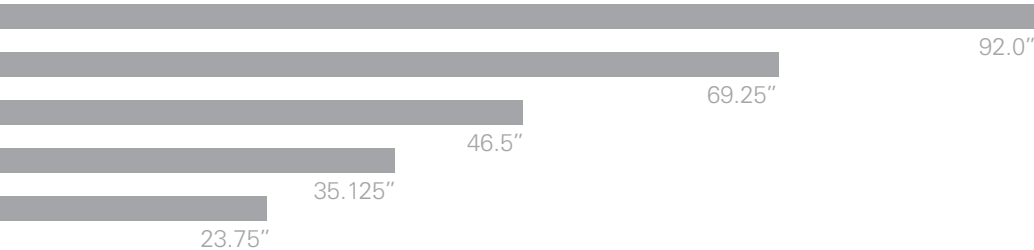
Actual Size

PENDANT	WALL	Length	Lumens	Watts
UDL2	UDWL2	2 ft.	1,733	20
UDL3	UDWL3	3 ft.	2,585	30
UDL4	UDWL4	4 ft.	3,465	40
UDL6	UDWL6	6 ft.	5,170	60
UDL8	UDWL8	8 ft.	6,930	80

PENDANT standard



WALL mount



Remote Driver Canopy
3.8 x 0.45 in.

RGB DMX

All Media, Completa, Uno, and Dos linear LED fixtures are available with single-color red or blue LEDs; or RGB with DMX512 interface controlled with the Traxon e:cue Light-Drive (*below*), or other third party DMX controllers.

RGB/RGBW CONTROLS

BDMXMOD

- Osram part no. OTDMXRGB supplied.
- DMX control interface for
- Provides DMX control with protocols that meet USITT DMX-512A or DMX512 (DIN 56930-2). No converter is required. DMX controls by others.
- A second 4-conductor control cable to fixture canopy is supplied.

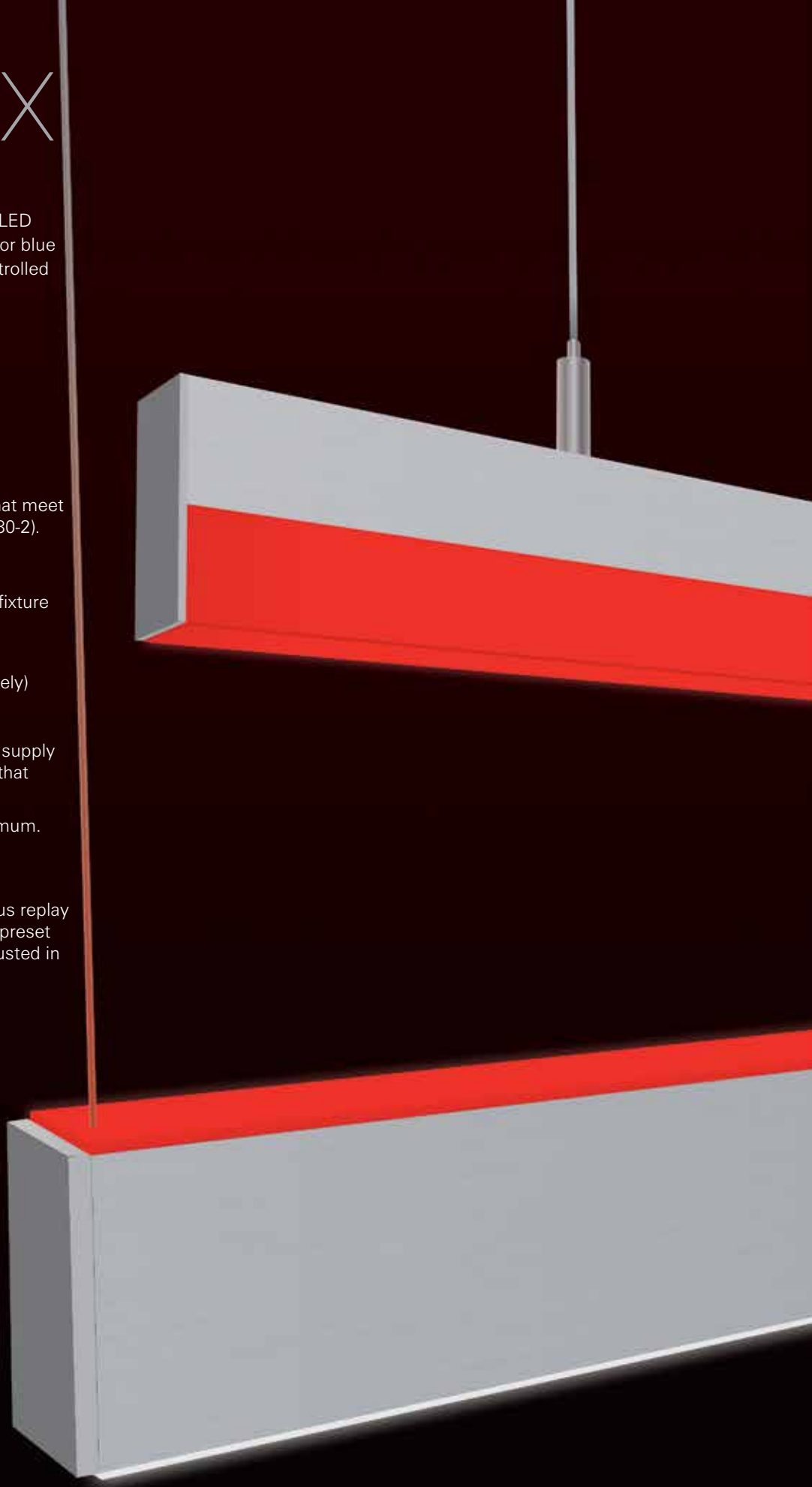
TRAXON LIGHT-DRIVE RGB (order separately)

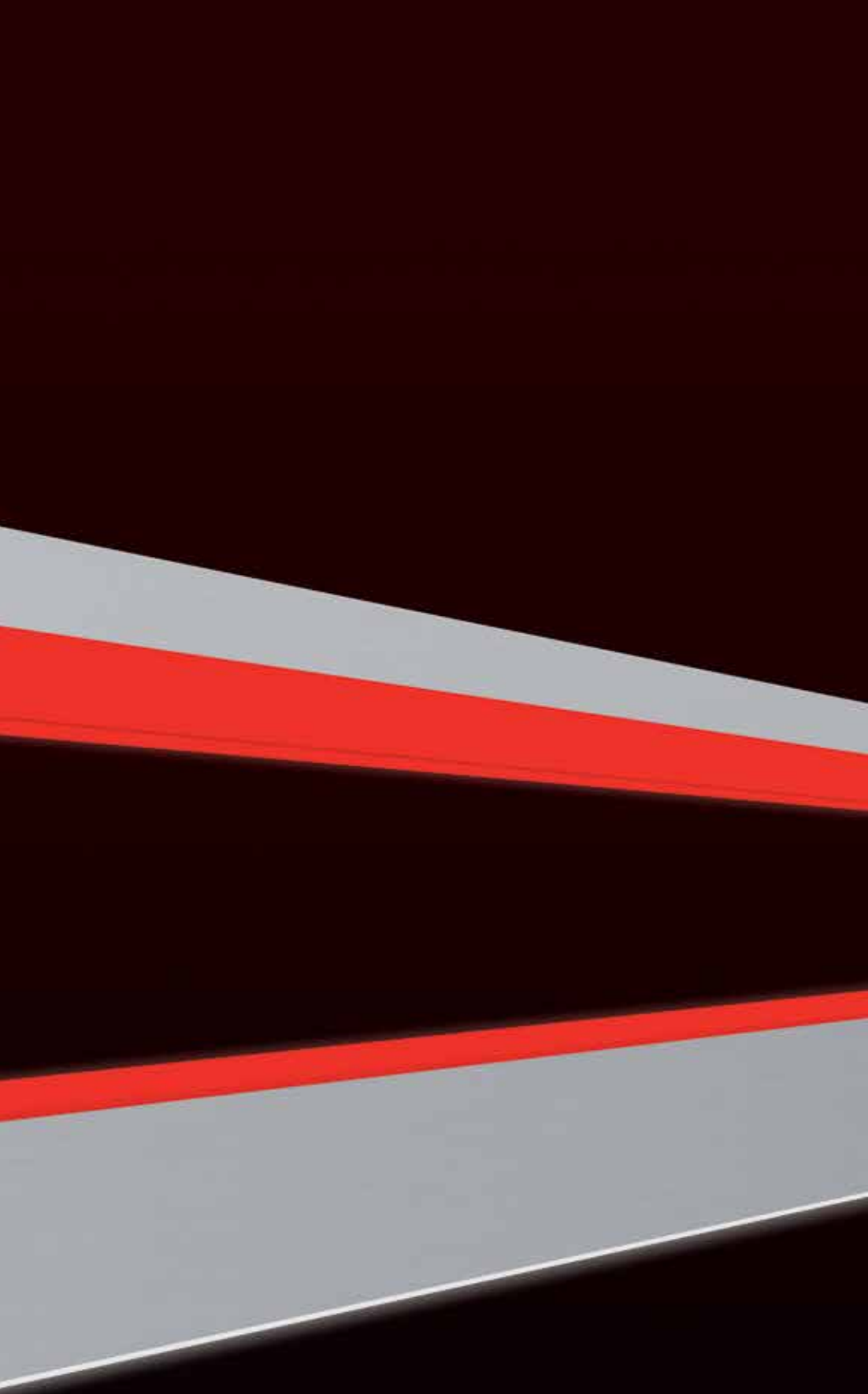
BTRAXW—white controller

- Stand-alone, wall-mounted (12V power supply included) DMX controller for RGB LED that provides direct access to fixtures.
- One channel controls 32 fixtures, maximum.
- Tune color and brightness with the Light-Drive wheel.
- Two sequence modes enable continuous replay of all saved color settings, as well as a preset color-phase function, which can be adjusted in replay speed.
- Fully dimmable white mode button.
- See www.traxon-usa.com for details.



Traxon e:cue Light-Drive Elite wall controller mounts to 2x4 handy box.





Media wide beam

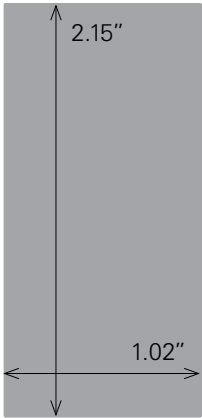


Media (MEH-dee-ah) fixtures consist of a matte anodized, extruded aluminum housing on top, the lower half an extruded, frosted white DR acrylic lens. Available in stand-alone lengths of 2, 3, 4, 6 and 8 feet, connectors may also be used to join fixtures into continuous, unbroken runs of light.

Media is offered with single-color red or blue LEDs, RGB/RGBW with DMX512 interface, or with white 90 CRI Nichia LED chips, which are available in 3000, 3500, and 4000° K color temperatures. Dimming and EM options are also offered. (See back page.)

Suspended with field-adjustable aircraft cables, Media fixtures may be installed in hard lid or T-bar ceilings. cUL listed for dry locations.

PENDANT	SURFACE	Length	Lumens LO	Watts LO	Lumens HO	Watts HO
ST1P2	ST1S2	2 ft.	725	10	1,081	15
ST1P3	ST1S3	3 ft.	1,081	15	1,6225	22
ST1P4	ST1S4	4 ft.	1,449	20	2,162	30
ST1P6	ST1S6	6 ft.	2,162	30	3,243	44
ST1P8	ST1S8	8 ft.	2,898	40	4,324	60

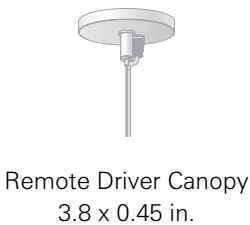
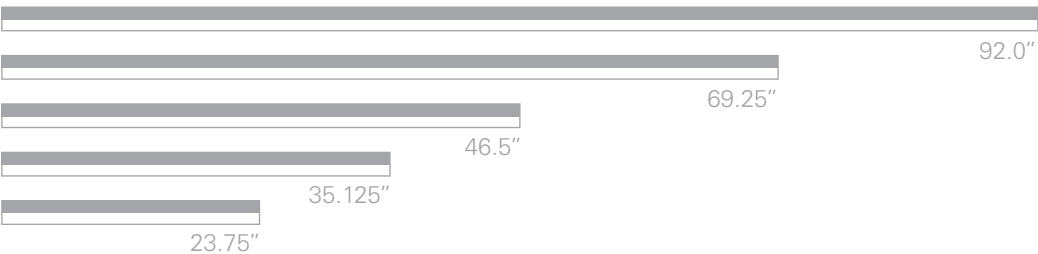


Actual Size

PENDANT



SURFACE





IALD Headquarters Offices
Chicago, IL

Emily Klingensmith, IALD, LC, LEED AP, Principal
Schuler Shook

Photo: © tomrossiter photography



Woodland Dune Home
Bridman, MI

Kuklinski + Rappe Architects

Photo: Steve Hall, Hedrich Blessing

Completa

downlight

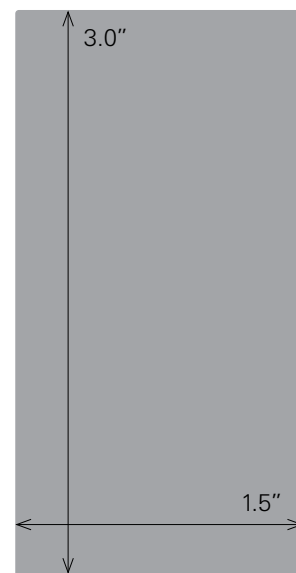


Completa (com-PLUH-tah) fixtures consist of a matte anodized, extruded aluminum housing, the downlight diffused with a frosted white DR acrylic lens. Available in stand-alone lengths of 2, 3, 4, 6 and 8 feet, individual fixtures may also be joined with connectors into continuous, unbroken runs of light.

Completa is offered with single-color red or blue LEDs, RGB/RBGW with DMX512 interface, or with white 90 CRI Nichia LED chips, which are available in 3000, 3500, and 4000° K color temperatures. Dimming and EM options are also offered. (See back page.)

Suspended with field-adjustable aircraft cables, Completa fixtures may also be installed in hard lid or T-bar ceilings. cUL listed for dry locations.

PENDANT	SURFACE	Length	Lumens LO	Watts LO	Lumens HO	Watts HO
ST2P2	ST2S2	2 ft.	819	10	1,222	15
ST2P3	ST2S3	3 ft.	1,222	15	1,833	22
ST2P4	ST2S4	4 ft.	1,638	20	2,444	30
ST2P6	ST2S6	6 ft.	2,444	30	3,666	44
ST2P8	ST2S8	8 ft.	3,276	40	4,888	60

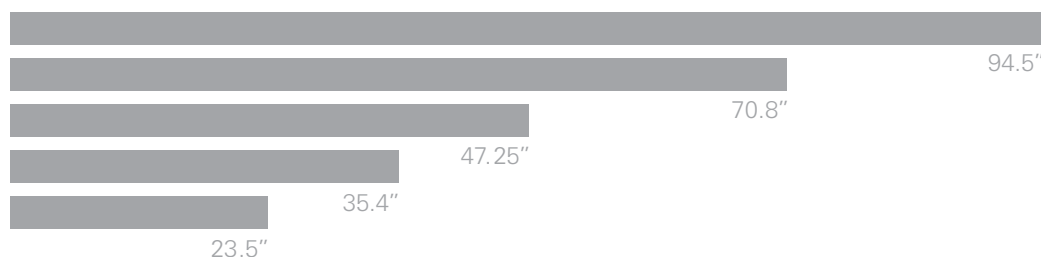


Actual Size

PENDANT standard



SURFACE mount

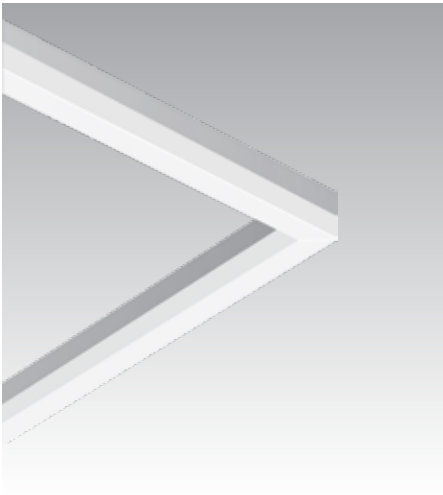


Remote Driver Canopy
3.8 x 0.45 in.

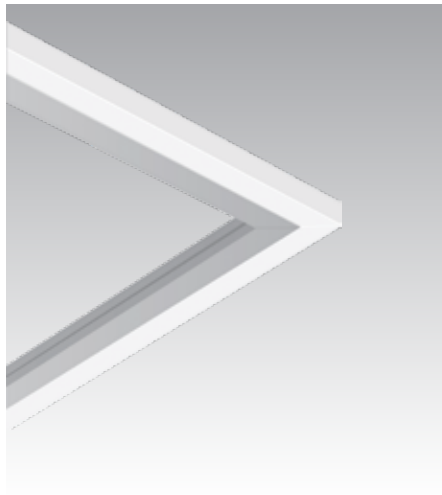
Media & Completa^{squared}

Both Media and Completa may be configured into decorative 2, 3 and 4 ft. squares and rectangles. The LEDs are available with single-color red or blue LEDs, RGB/RGBW with DMX512 interface, or with white 90 CRI Nichia LED chips, which are available in 3000, 3500, and 4000° K color temperatures. See back page for additional option information.

Standard sizes, shown below, are shipped as one piece, with welded, mitred corners, no field assembly required. Consult factory regarding larger, custom sizes that require field assembly.



M2LD—Media Squared, Down, Pendant

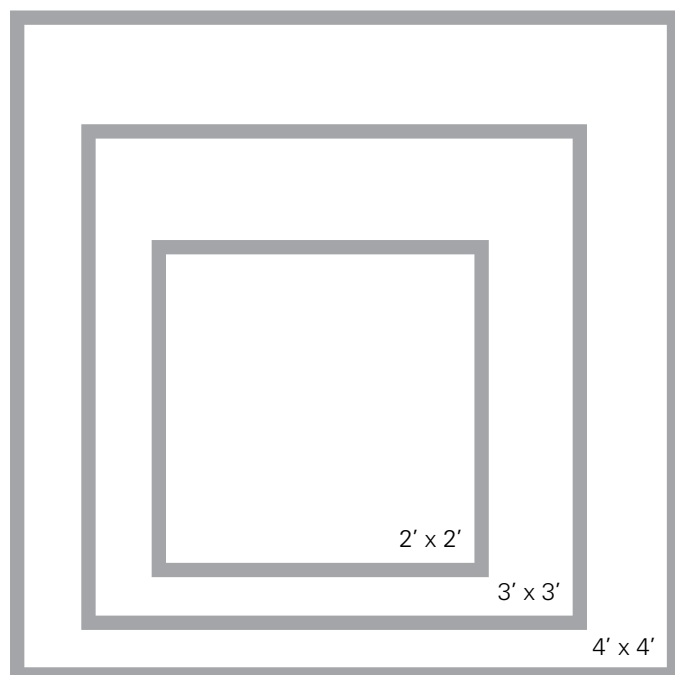


M2LS—Media Squared, Side, Pendant

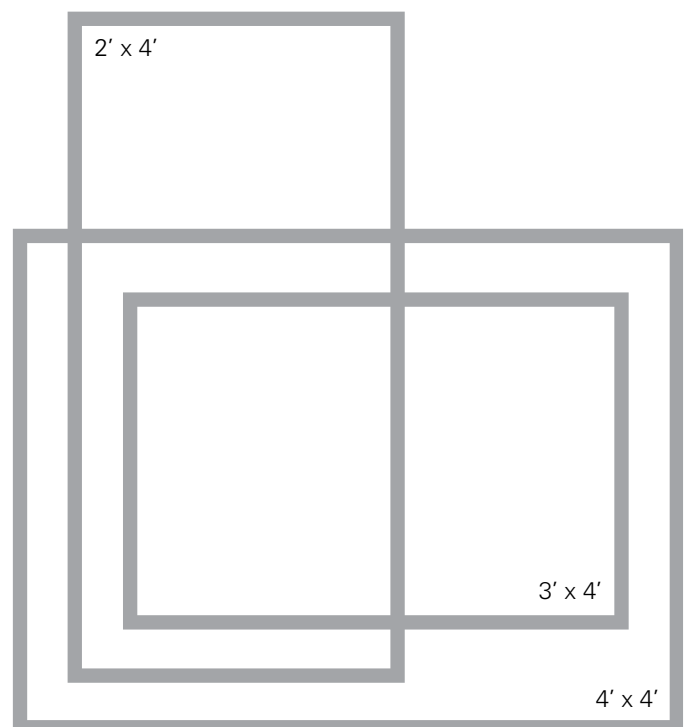


C2L—LED, Completa Squared, Pendant

Standard Squares



Standard Rectangles





Red Ventures Headquarters
Fort Mill, SC

Architect: Overcash Demmitt

Photo: Clear Sky Images

Finishes+Textures

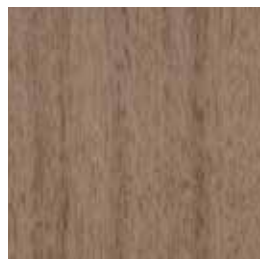


Explore new design options for Cylindro II and Uno/Dos circular, and Uno/Dos strip light fixtures, with Delray's new textured resin laminates. Available in a variety of wood, leather, and patterned textures, these finishes are durable, nonporous, and scratch-resistant.

The laminates are applied to order by trained Delray technicians, providing a seamless appearance, with crisp, clean edges. (Swatches available. Please consult factory.)



SD–Silver Driftwood



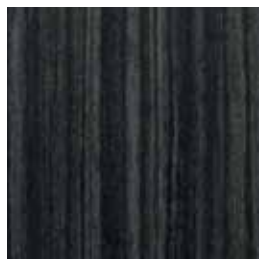
BW–Barnwood



H0–Honey Oak



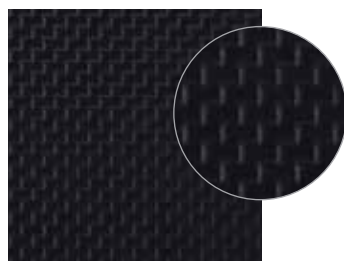
M–Maple



ES–Espresso



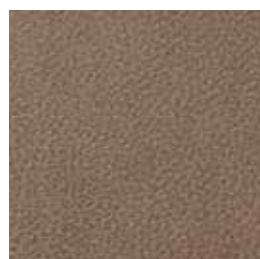
SL–Saddle Leather



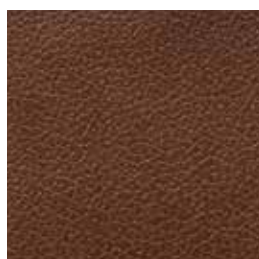
CB–Carbon Fiber



DC–Dark Cherry



KL–Khaki Leather



TL–Tan Leather



NOTE: the grain of wood finishes runs vertical on Cylindro II & III fixtures; horizontal on all other fixtures. Finishes and textures not available for Cylindro 640 or 650.