

# Uno linear direct

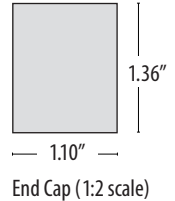
direct linear LED pendant or surface, with white acrylic lens



### CONSTRUCTION

- Extruded aluminum outer housing.
- Direct frosted acrylic lens
- Suspended with field-adjustable aircraft cable, with push-button glider. 8 ft. 18 AWG power cord. Each module requires its own power feed. Specify **XP** for additional length. (25 ft. maximum.)
- Default finish/power cord pairings are silver/gray, white/white, black/black.

- For RAL colors, power cord color must be specified.
- For differing fixture/canopy colors, please consult factory.
- Drivers and DMX module remotely installed in surface mount housing. For remote driver installation, see p. 2.
- Drivers are universal voltage (120–277V).
- cUL listed for dry and damp locations only.



<b>TYPE:</b>	<b>PROJECT:</b>
<b>ORDER NUMBER:</b>	

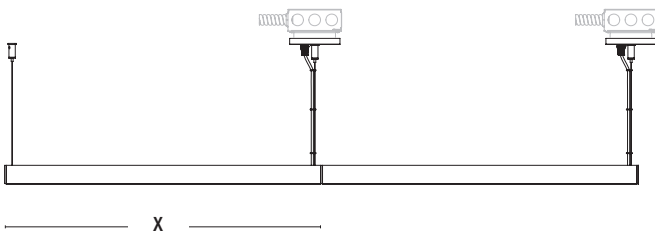
MODEL#	LENGTH	FINISH	LEDS	DIMMING	OPTIONS	
<b>ULP</b> —direct pendant	2–2 ft. 3–3 ft.	<b>S</b> —Silver <b>W</b> —White	<b>BW</b> —Barn Wood <b>CB</b> —Carbon Fiber	<b>SD</b> —Silver Driftwood <b>DC</b> —Dark Cherry	<b>W30</b> <b>W35</b> <b>W40</b> <b>RGBW</b> —color + 3500° K white	<b>SLRD</b> <b>SLRDTB</b> <b>S100P</b> <b>EM</b>
<b>ULS</b> —direct surface	4–4 ft. 5–5 ft. 6–6 ft. 8–8 ft. Enter Run Length (ft.)	<b>K</b> —Black <b>CC</b> —RAL Color*	<b>ES</b> —Espresso <b>HK</b> —Honey Oak <b>M</b> —Maple	<b>KL</b> —Khaki Leather (More see p. 3)	<b>D</b> —Standard <b>BDIM-W11</b> <b>DMX</b> <b>DA</b> —DALI <b>DPH</b> —Phase (120V only)	

Example:

<b>ULP</b>	<b>12-ft.</b>	<b>S</b>	<b>W35</b>	<b>D</b>	<b>SLRD</b>
------------	---------------	----------	------------	----------	-------------

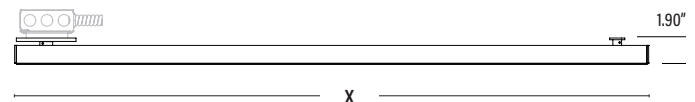
<b>BDMXCON-W</b> —white faceplate (enter quantity):	<b>XP</b> —Extra power cord (in inches, 25 ft. max.):
<b>BDMXCON-B</b> —black faceplate (enter quantity):	Specify <b>canopy</b> finish (silver, white, black):
<b>EB</b> —Earthquake Bracing Kit (enter quantity):	Specify power cord color (gray, white, black):
<b>XL</b> —custom lumen reduction (specify lumens):	*Specify RAL color number:

**ULP** – Pendant  
Individual Modules & Continuous Runs, **SLRD** Mount

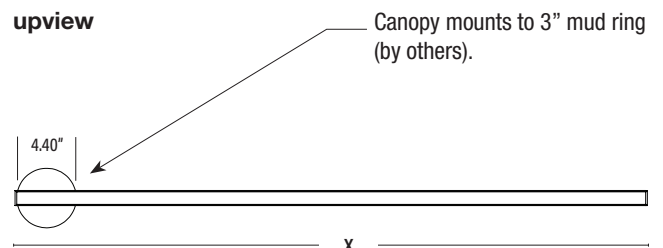


**ULS** – Surface  
**SLRD** Mount

### side view



### upview



NOMINAL	X=ACTUAL
2 ft.	23.75"
3 ft.	35.13"
4 ft.	46.50"
5 ft.	57.90"
6 ft.	69.25"
8 ft.	92.00"

**NOTE:** Specify overall length. Delray will configure the run utilizing the longest standard module lengths. For specific module lengths and power feed placements, please consult factory.

# Uno linear direct

direct linear LED pendant or surface, with white acrylic lens



## WHITE LEDS

Nichia Corp. NFSL757 linear board chips. 95 CRI. Specify color: **W30**–3000° Kelvin, **W35**–3500° Kelvin, or **W40**–4000° Kelvin.

## CUSTOM LUMEN OUTPUT REDUCTION

Factory set custom reduced-lumen output driver configuration. Order **XL**. Specify lumens. Static white only.

## COLOR LEDS

**RGBW** with 3500° K white. Includes RGBW interface. Optional DMX controller also available. (See below. right.)

## DIMMING

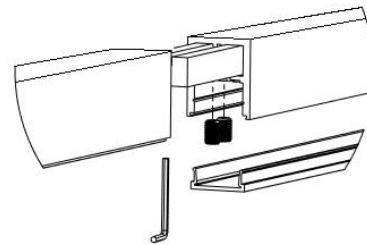
- **D**–standard supplied driver. 0–10V, programmable, 1% dimming, 120–277V, 50/60 Hz.
- **BDIM-W11**–Lutron EcoSystem LED14 Series, 120–277V, 1% dimming, fade-to-off.
- **DPH**–Triac and ELV 1% dimming at 120V 60 Hz only.
- **DA**–DALI 1% dimming, fade-to-off. 120–277V, 50/60 Hz.
- **DMX**–for both white and RGBW LEDs, 0.1% dimming fade-to-off. 120–277V, 50/60Hz.

## CONTINUOUS MOUNT

Continuous runs include joiner **UJ**.

## WATTS / LUMENS / DRIVERS REQUIRED

LENGTH Nominal (Actual)	WATTS		DELIVERED LUMENS		FEEDS	
	White	RGBW	White	RGBW	White	RGBW
2 ft. (23.75 in.)	5	Consult Factory	520	Consult Factory	Consult Factory	Consult Factory
3 ft. (35.13 in.)	8		827			
4 ft. (46.50 in.)	10		1,040			
5 ft. (57.90 in.)	13		1,347			
6 ft. (69.25 in.)	20		2,080			
8 ft. (92.00 in.)	20		2,080			

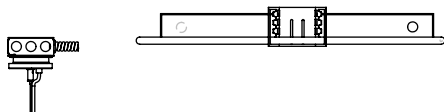


## REMOTE DRIVERS

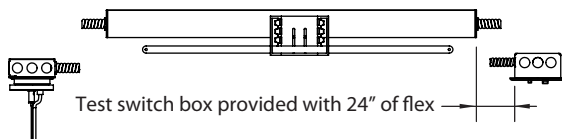
Drivers must be accessible after installation. Multiple driver housings must be mounted no closer than 4" apart side-by-side, or 1" apart end-to-end, to avoid overheating. Driver to canopy distance should not exceed 100 ft., using 10 AWG wire.

**SLRD**: Standard remote housing has no bar hangers and mounts to structure with screws. Dimensions: 24" length, 2.36" height, 2.65" width.

**SLRDTB**: Remote housing for T-bar ceiling includes bar hangers. Dimensions: 27" length, 3.4" height, 4.25" width.



**EM/SLRDTB**: Remote **EM** housing for T-bar ceiling includes bar hangers and remote test switch. Dimensions: 36" length, 3.4" height, 4.25" width. Provides 10W for 90 minutes.

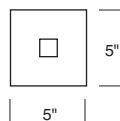


## DRIVER HOUSING DIMENSIONS

Standard: 16" x 2.36"  
Standard **EM**: 35.50" x 1.90"

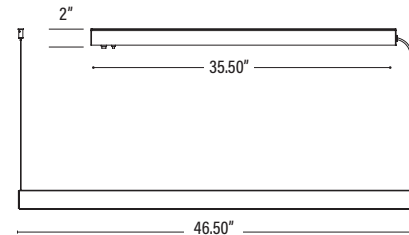
## OPTIONAL J-BOX COVER

Cover plate mounts to maximum 4" square J-box. Ballast housing mounts to wall on top of cover plate, which may be painted to match ceiling or wall, and includes two mounting spacers to offset cover thickness. Order **S100P**.



## EMERGENCY

For 4' through 8' fixtures only. Battery pack provides 10W for 90 minutes. Adds additional length to driver housing.



## OPTIONAL DMX CONTROLLER

- Standalone, wall-mounted DMX controller for RGBW LED that provides direct access to fixtures. Power supply included.
- Tune color hue with sensitive wheel. Saturation and brightness control. On/off switch.
- Go to <https://www.nicolaudie.com/en/stick-de3.htm> for details.

Order separately, either **BDMXCON-W**–white faceplate or **BDMXCON-B**–black faceplate.

## AIRCRAFT CABLE

NOTE: Not recommended for outdoor use, where fixture will be exposed to water, or subject to wind oscillation. Avoid use near HVAC vents and in environments with corrosive chemical vapors, such as swimming pools.

## ACRYLIC DIFFUSER CLEANING

WARNING: Do not clean with ammonia based cleaners (e.g. Windex®). Use only water or cleaners specifically formulated for cleaning plastics.

# Uno linear direct

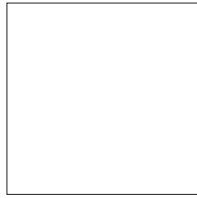
direct linear LED pendant or surface, with white acrylic lens



## PAINT FINISHES



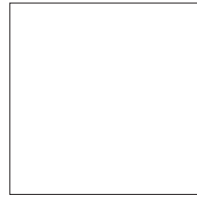
S-Silver



W-white

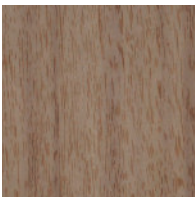


K-Black

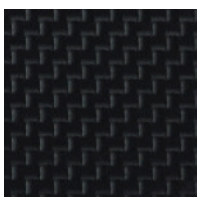


CC-XXXX RAL Color

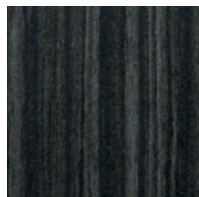
## TEXTURED FINISHES



BW-Barnwood



CB-Carbon Fiber



ES-Espresso



HK-Honey Oak

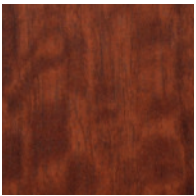


M-Maple



SD-Silver Driftwood

## PREMIUM TEXTURED FINISHES

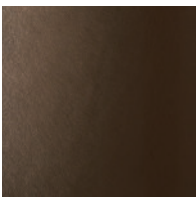


DC-Dark Cherry



KL-Khaki Leather

## METALLIC FINISHES



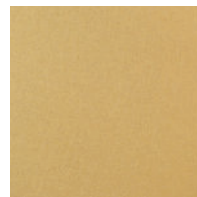
BR-Bronze



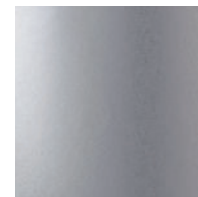
GF-Gold Leaf



CO-Copper



GT-Gold Textured



SA-Stainless Steel

### TEXTURED FINISHES - CANOPY AND POWER CORD COLORS

Specify Silver, White, Black or RAL color for canopy.  
Also specify Gray, White or Black power cord.

### ACRYLIC DIFFUSER CLEANING

**WARNING:** Do not clean with ammonia based cleaners (e.g. Windex®). Use only water or cleaners specifically formulated for cleaning plastics.