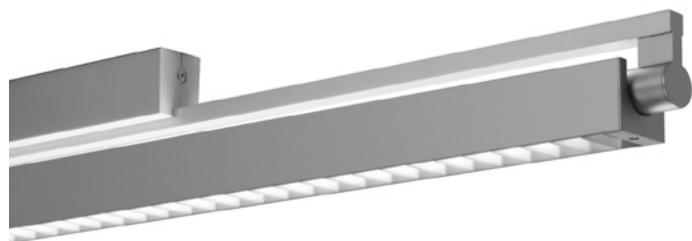


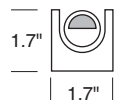
# Swing SLW5 trim 20

adjustable LED single lamp surface mount with square trim, white louvers



## CONSTRUCTION

- Single 2, 3, 4 ft. stand-alone, surface mount fixture. Each fixture requires its own power feed.
- Zinc aluminum alloy and aluminum extrusion, with matte anodized finish.
- Back plate has 7/8 in. opening for direct conduit feed. Not intended for J-box mount.
- cUL listed for damp locations.



**TRIM 20**  
Direct/Indirect Square Trim  
with White Louvers

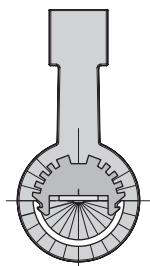
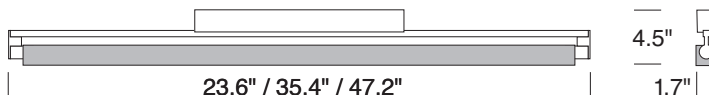
<b>TYPE:</b>	<b>PROJECT:</b>
<b>ORDER NUMBER:</b>	

MODEL#	LENGTH (FT.)	HO/LO	LEDS	FINISHES*		DIMMING	EMERGENCY	OPTION	TRIM
SLW5	4	LO	W30	BW-Barn Wood	DC-Dark Cherry	D-Standard BDIM-W11	EM	SW200S SW200W	20
	3	HO	W35	CB-Carbon Fiber	KL-Khaki Leather				
	2		W40	ES-Espresso	BR-Bronze				
				HK-Honey Oak	GF-Gold Leaf				
				M-Maple	CO-Copper				
				SD-Silver Driftwood	GT-Gold Textured				
					SA-Stainless Steel				
Example:									
SLW5	4	HO	W35	BW		D		SW200S	20

<b>XL</b> -custom lumen reduction (specify lumens):	
---	--

\*Trim only. For swatches, see p.3.

MODEL	LENGTH
SLW54LO/HO	4 ft.
SLW53LO/HO	3 ft.
SLW52LO/HO	2 ft.



Lamp rotates 270°,  
in 15° stepped increments,  
to direct light where needed.

# Swing SLW5 trim 20

adjustable LED single lamp surface mount with square trim, white louvers



## WHITE LEDS

Samsung tight bin chips on aluminum clad boards. 90 CRI.  
Specify color: W30–3000° Kelvin, W35–3500° Kelvin,  
or W40–4000° Kelvin color temperature.

## DIMMING

- **D**—standard supplied driver. 0–10V, programmable, 1% dimming, 120/277V, 50/60 Hz.
- **BDIM-W11**—Lutron EcoSystem LED14 Series, 1% dimming, fade-to-off.

## CUSTOM LUMEN OUTPUT REDUCTION

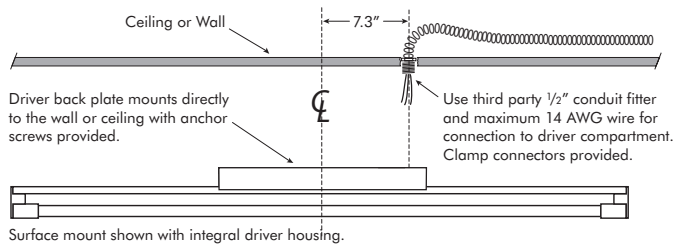
Factory set custom reduced-lumen output driver configuration.  
Order **XL**. Specify lumens.

## EMERGENCY

For 4' through 8' fixtures only. Battery pack provides 10W for 90 minutes. Adds additional length to driver housing.

## MOUNT INFO

Swing features a die cast backplate with a threaded 1/2" conduit fitting at one end for direct connection to flexible conduit, which provides the smallest ballast compartment profile, and avoids unsightly plates or covers on walls or ceilings. Use a third party 1/2" conduit fitting and maximum 14 AWG wire for communication to the ballast. Detailed installation instructions are available at [delraylighting.com](http://delraylighting.com).



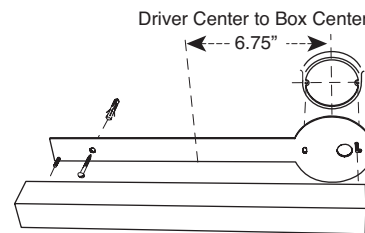
**NOTE: POWER DOES NOT ENTER AT THE CENTER**

## WATTS / LUMENS / EFFICACY

LENGTH	WATTS	DELIVERED LUMENS	EFFICACY
2 ft. <b>LO</b>	7	722	97 LPW
2 ft. <b>HO</b>	14	1,443	97 LPW
3 ft. <b>LO</b>	10.5	1,082	97 LPW
3 ft. <b>HO</b>	21	2,165	97 LPW
4 ft. <b>LO</b>	14	1,443	97 LPW
4 ft. <b>HO</b>	28	2,886	97 LPW

## J-BOX MOUNT

**SW5** fixture with standard driver housing requires a 3 in. mud ring to mount to standard J-box; the holes in line with the direction of the fixture. Order **SW200**, available in **S**—silver or **W**—white.

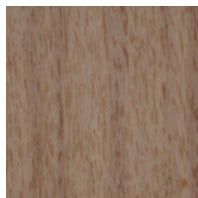


# Swing SLW5 trim 20

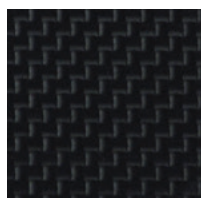
adjustable LED single lamp surface mount with square trim, white louvers



## TEXTURED FINISHES



**BW**-Barnwood



**CB**-Carbon Fiber



**ES**-Espresso



**HK**-Honey Oak

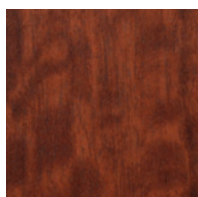


**M**-Maple



**SD**-Silver Driftwood

## PREMIUM TEXTURED FINISHES

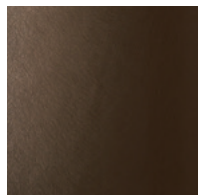


**DC**-Dark Cherry



**KL**-Khaki Leather

## METALLIC FINISHES



**BR**-Bronze



**GF**-Gold Leaf



**CO**-Copper



**GT**-Gold Textured



**SA**-Stainless Steel