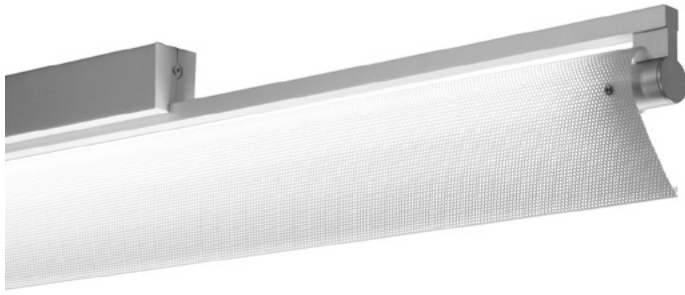


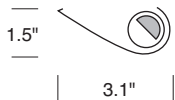
Swing SLW5 trim 18

adjustable LED single lamp surface mount with white perforated reflector



CONSTRUCTION

- Single 2, 3, 4 ft. stand-alone, surface mount fixture. Each fixture requires its own power feed.
- Zinc aluminum alloy and aluminum extrusion, with matte aodized finish.
- Back plate has 7/8 in. opening for direct conduit feed. Not intended for J-box mount.
- cUL listed for damp locations.



TRIM 18
Direct/Indirect White Elliptical
Perforated Diffuser with Acrylic Backing

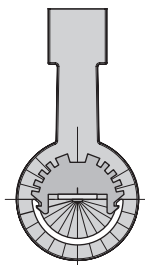
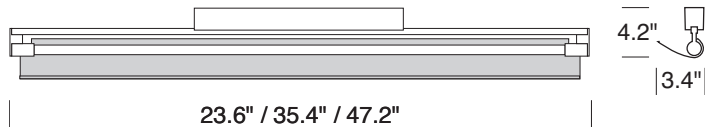
TYPE:	PROJECT:
ORDER NUMBER:	

MODEL#	LENGTH (FT.)	HO/LO	LEDS	DIMMING	EMERGENCY	OPTION	TRIM
SLW5	4 3 2	LO HO	W30 W35 W40	D-Standard BDIM-W11	EM-Emergency	SW200S SW200W	18
Example:							
SLW5	4	HO	W35	D		SW200S	18

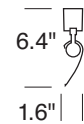
XL- custom lumen reduction (specify lumens):	
--	--

MODEL
SLW54LO/HO
SLW53LO/HO
SLW52LO/HO

LENGTH
4 ft.
3 ft.
2 ft.



Lamp rotates 270°,
in 15° stepped increments,
to direct light where needed.



Swing SLW5 trim 18

adjustable LED single lamp surface mount with white perforated reflector



WHITE LEDS

Samsung tight bin chips on aluminum clad boards. 90 CRI. Specify color: W30–3000° Kelvin, W35–3500° Kelvin, or W40–4000° Kelvin color temperature.

DIMMING

- **D**—standard supplied driver. 0–10V, programmable, 1% dimming, 120/277V, 50/60 Hz.
- **BDIM-W11**—Lutron EcoSystem LED14 Series, 1% dimming, fade-to-off.

CUSTOM LUMEN OUTPUT REDUCTION

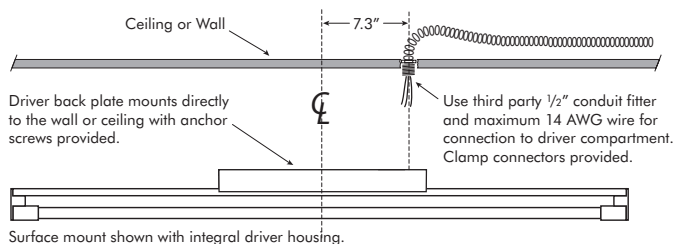
Factory set custom reduced-lumen output driver configuration. Order **XL**. Specify lumens.

EMERGENCY

For 4' through 8' fixtures only. Battery pack provides 10W for 90 minutes. Adds additional length to driver housing.

MOUNT INFO

Swing features a die cast backplate with a threaded 1/2" conduit fitting at one end for direct connection to flexible conduit, which provides the smallest ballast compartment profile, and avoids unsightly plates or covers on walls or ceilings. Use a third party 1/2" conduit fitting and maximum 14 AWG wire for communication to the ballast. Detailed installation instructions are available at delraylighting.com.



NOTE: POWER DOES NOT ENTER AT THE CENTER

WATTS / LUMENS / EFFICACY

LENGTH	WATTS	DELIVERED LUMENS	EFFICACY
2 ft. LO	7	722	97 LPW
2 ft. HO	14	1,443	97 LPW
3 ft. LO	10.5	1,082	97 LPW
3 ft. HO	21	2,165	97 LPW
4 ft. LO	14	1,443	97 LPW
4 ft. HO	28	2,886	97 LPW

J-BOX MOUNT

SW5 fixture with standard driver housing requires a 3 in. mud ring to mount to standard J-box; the holes in line with the direction of the fixture. Order **SW200**, available in **S**—silver or **W**—white.

