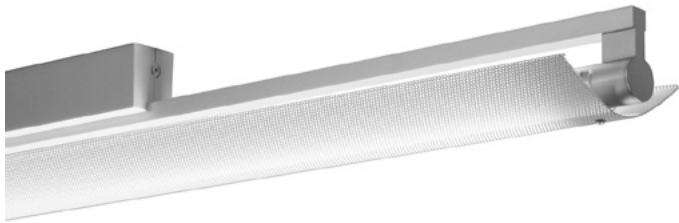


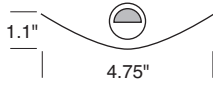
# Swing SLW5 trim 13

adjustable LED single lamp surface mount with perforated elliptical diffuser



### CONSTRUCTION

- o Single 2, 3, 4 ft. stand-alone, surface mount fixture. Each fixture requires its own power feed.
- o Zinc aluminum alloy and aluminum extrusion, with matte aodized finish.
- o Back plate has 7/8 in. opening for direct conduit feed. Not intended for J-box mount.
- o cUL listed for damp locations.



**TRIM 13**  
Direct/Indirect White Elliptical  
Perforated Diffuser with Acrylic Backing

<b>TYPE:</b>	<b>PROJECT:</b>
<b>ORDER NUMBER:</b>	

MODEL#	LENGTH (FT.)	HO/LO	LEDS	DIMMING	EMERGENCY	OPTION	TRIM
SLW5	4	LO	W30	D-Standard BDIM-W11	EM-Emergency	SW200S SW200W	13
	3	HO	W35				
	2		W40				

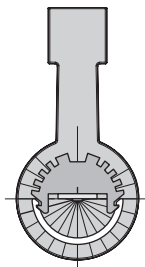
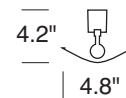
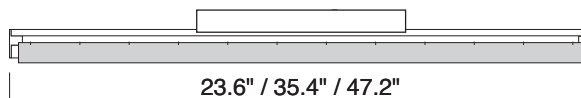
Example:

SLW5	4	HO	W35	D		SW200S	13
------	---	----	-----	---	--	--------	----

XL-custom lumen reduction (specify lumens):

**MODEL**  
SLW54LO/HO  
SLW53LO/HO  
SLW52LO/HO

**LENGTH**  
4 ft.  
3 ft.  
2 ft.



Lamp rotates 270°,  
in 15° stepped increments,  
to direct light where needed.

# Swing SLW5 trim 13

adjustable LED single lamp surface mount with perforated elliptical diffuser



## WHITE LEDS

Samsung tight bin chips on aluminum clad boards. 90 CRI. Specify color: W30–3000° Kelvin, W35–3500° Kelvin, or W40–4000° Kelvin color temperature.

## DIMMING

- **D**—standard supplied driver. 0–10V, programmable, 1% dimming, 120/277V, 50/60 Hz.
- **BDIM-W11**—Lutron EcoSystem LED14 Series, 1% dimming, fade-to-off.

## CUSTOM LUMEN OUTPUT REDUCTION

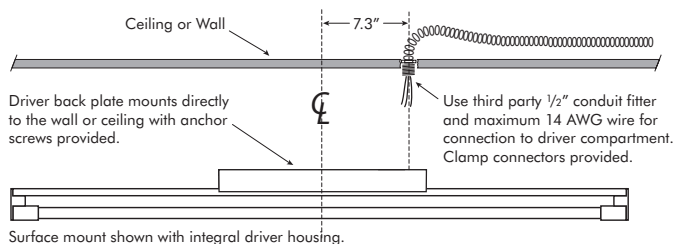
Factory set custom reduced-lumen output driver configuration. Order **XL**. Specify lumens.

## EMERGENCY

For 4' through 8' fixtures only. Battery pack provides 10W for 90 minutes. Adds additional length to driver housing.

## MOUNT INFO

Swing features a die cast backplate with a threaded 1/2" conduit fitting at one end for direct connection to flexible conduit, which provides the smallest ballast compartment profile, and avoids unsightly plates or covers on walls or ceilings. Use a third party 1/2" conduit fitting and maximum 14 AWG wire for communication to the ballast. Detailed installation instructions are available at [delraylighting.com](http://delraylighting.com).



**NOTE: POWER DOES NOT ENTER AT THE CENTER**

## WATTS / LUMENS / EFFICACY

LENGTH	WATTS	DELIVERED LUMENS	EFFICACY
2 ft. <b>LO</b>	7	722	97 LPW
2 ft. <b>HO</b>	14	1,443	97 LPW
3 ft. <b>LO</b>	10.5	1,082	97 LPW
3 ft. <b>HO</b>	21	2,165	97 LPW
4 ft. <b>LO</b>	14	1,443	97 LPW
4 ft. <b>HO</b>	28	2,886	97 LPW

## J-BOX MOUNT

**SW5** fixture with standard driver housing requires a 3 in. mud ring to mount to standard J-box; the holes in line with the direction of the fixture. Order **SW200**, available in **S**—silver or **W**—white.

