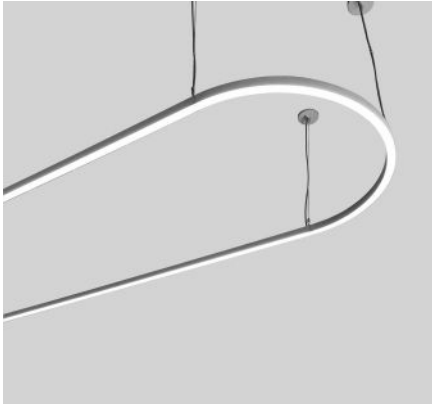


# DOS curve

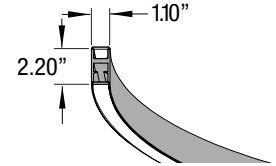
LED direct/indirect circular & linear modules with opal acrylic lenses



### CONSTRUCTION

- Extruded aluminum outer housing
- Direct/indirect frosted acrylic lens.
- Shipped in multiple sections, with joiners for assembly in the field. Each section includes one 8 ft. 18 AWG adjustable power cord and AC cables. Push button grippers supplied, standard.
- Specify **XP** for additional length (25 ft. max.).
- Default finish/power cord pairings are silver/gray, white/white, black/black.
- For RAL colors, power cord color must be specified.

- For differing fixture/canopy colors, please consult factory.
- Drivers and DMX module installed remote only.
- Drivers are universal voltage (120-277V).
- ETL listed per UL and CSA standards.



<b>TYPE:</b>	<b>PROJECT:</b>
<b>ORDER NUMBER:</b>	

CURVED MODEL#	LINEAR MODEL#	FINISH	LEDS	MOUNT STYLE*	DIMMING*	OPTIONS*
UDC31–90° R17 in.	UDLC2–2 ft.	S–Silver	W30	R–Remote	D	SS
UDC61–90° R37 in.	UDLC3–3 ft.	W–White	W35	EM–Emergency	BDIM-W11	DO
UDC43–120° R22 in.	UDLC4–4 ft.	K–Black	W40			
UDC32–180° R17 in.	UDLC5–5 ft.	BW–Barn Wood	RGBW			
UDC62–180° R37 in.	UDLC6–6 ft.	CB–Carbon Fiber				
UDC33–120° R17.55 in.	UDLC8–8 ft.	CO–Copper				
UDC41–90° R22.55 in.		ES–Espresso				
UDC42–180° R22.55 in.		GT–Gold Textured				
UDC63–120° R40.05 in.		HK–Honey Oak				
		M–Maple				
		SA–Stainless Steel				
		CC–RAL Color				
		SD–Silver Driftwood				

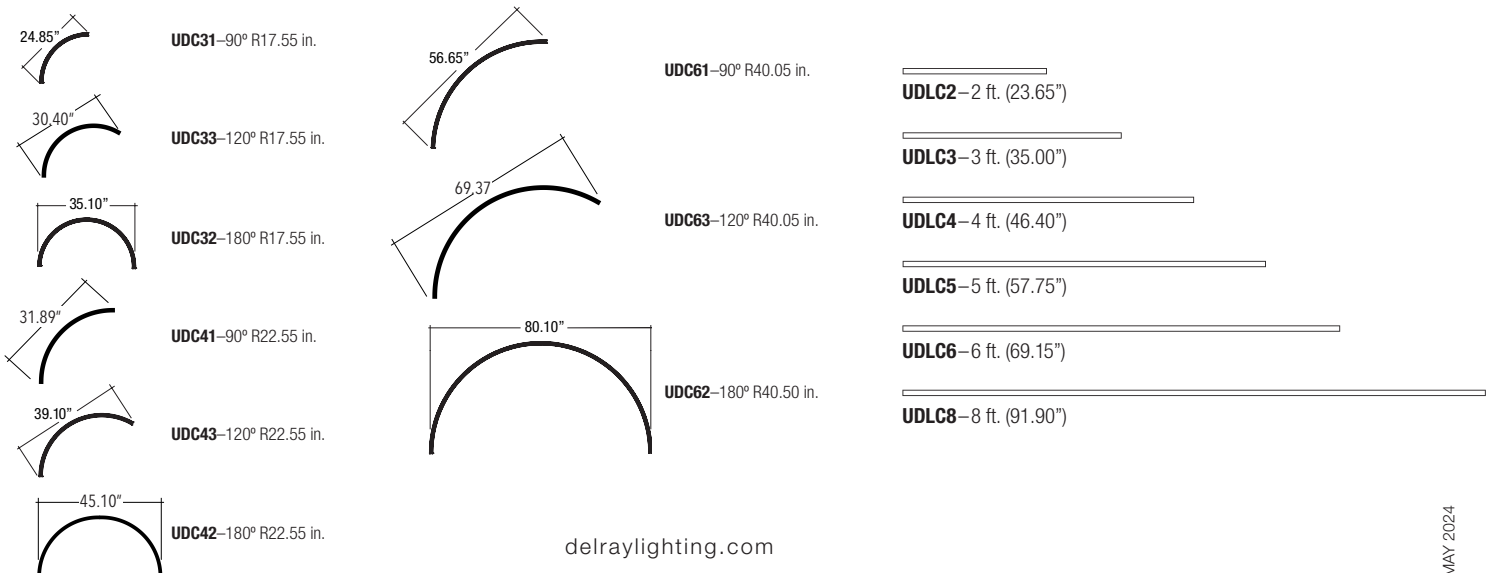
Example:

UDC31 x 2	UDLC4 x 2	K	W30	R	D	DO
-----------	-----------	---	-----	---	---	----

BTRAXW–Traxon Light Drive (enter quantity)	XP–Extra power cord (in inches, 25 ft. max.)	
XL–custom lumen reduction (specify lumens)	UDCLEND–end cap (enter quantity):	
Specify canopy finish (silver, white, black):	*Specify RAL color number:	
Specify power cord color (gray, white, black):		

\*For details, please see p. 2.

### MODULES



# DOS curve

LED direct/indirect circular & linear modules with opal acrylic lenses



## WHITE LEDS

Nichia Corp. NFSL757 tight bin chips on aluminum boards. 90 CRI. Specify color: W30–3000° Kelvin, W35–3500° Kelvin, or W40–4000° Kelvin.

## DIMMING

- **D**—standard supplied driver. 0–10V, programmable, 1% dimming, 120/277V, 50/60 Hz.
- **BDIM-W11**—Lutron EcoSystem LED14 Series, 1% dimming, fade-to-off. Remote (**SR, CR, NCR**) install only.

## WATTS / LUMENS\*

CURVED MODULES	WATTS		DELIVERED LUMENS	
	WHITE	RGBW	WHITE	RGBW
<b>UDC31</b> –90° R17 in.	24	Consult Factory	2,045	Consult Factory
<b>UDC61</b> –90° R37 in.	49		4,100	
<b>UDC43</b> –120° R22 in.	43		3,630	
<b>UDC32</b> –180° R17 in.	44		4,100	
<b>UDC62</b> –180° R37 in.	98		8,200	
LINEAR MODULES	WATTS		DELIVERED LUMENS	
	WHITE	RGBW	WHITE	RGBW
<b>UDLC2</b> –2 ft. (23.65")	20	Consult Factory	1,732	Consult Factory
<b>UDLC3</b> –3 ft. (35.00")	30		2,585	
<b>UDLC4</b> –4 ft. (46.40")	40		3,465	
<b>UDLC6</b> –6 ft. (69.15")	60		5,170	
<b>UDLC8</b> –8 ft. (91.90")	80		6,930	

\***DO** option reduces mA, watts, and delivered lumens by half.

## REMOTE DRIVERS

Driver must be accessible after installation. For suspended and hard lid ceilings with access panels. Canopy mounts to mud ring attached to J-box.

**NOTE:** Multiple drivers must be mounted no less than 4 inches apart side-by-side, and 1 inch apart end-to-end, to avoid overheating.

Standard pendant length: 8 ft. Specify XP for extra pendant.

Maximum canopy to fixture distance: 25 ft. Maximum canopy to driver distance: 100 ft. (with 10 AWG wire).



Remote Driver Canopy  
3.80 x 0.45 in.

## OPTIONAL DMX CONTROLLER

### BTRAXW—white faceplate

- Standalone, wall-mounted (12V power supply included) DMX controller for RGBW LED that provides direct access to fixtures.
- Tune color and brightness with the Light-Drive wheel.
- Fully dimmable white mode button.
- Go to <https://www.nicolaudie.com/en/stick-de3.htm> for details.

## CUSTOM LUMEN OUTPUT REDUCTION

Factory set custom reduced-lumen output driver configuration. Order **XL**. Specify lumens. Static white only.

## SEPARATE SWITCHING

Direct and indirect LEDs may be wired separately. The quantity of drivers, quantity of feed points, and size of driver box (36")\* may increase. Order **SS**.

## DOWNLIGHT ONLY

If no uplight is required, order **DO**. Only downlight LEDs will be provided. Note: this option reduces mA, watts, and delivered lumens by half.

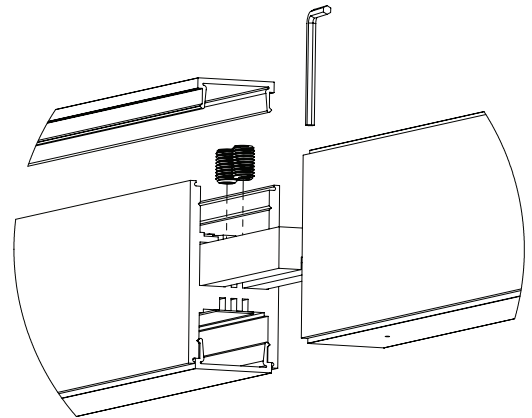


## END CAP

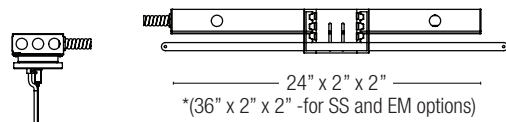
To terminate end modules only. Order **UDCLEND**.

## JOINER

Joins two modules in the field with 674200JOIN.



## R – Remote driver installation



**EM** – Emergency. Battery pack provides 10W for 90 minutes. Remote install only. Red driver light and test switch mounted in handy box installed at ceiling. Increases remote driver size to 36" length.

## AIRCRAFT CABLE

**NOTE:** Not recommended for outdoor use, where fixture will be exposed to water, or subject to wind oscillation. Avoid use near HVAC vents and in environments with corrosive chemical vapors, such as swimming pools.

## ACRYLIC DIFFUSER CLEANING

**WARNING:** Do not clean with ammonia based cleaners (e.g. Windex®). Use only water or cleaners specifically formulated for cleaning plastics.

# DOS curve

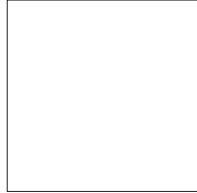
LED direct/indirect circular & linear modules with opal acrylic lenses



## STANDARD PAINT FINISHES



**S**-Silver



**W**-White

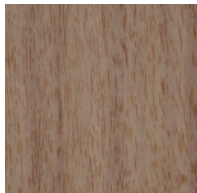


**K**-Black



**CC**-XXXX RAL Color

## PREMIUM TEXTURED FINISHES



**BW**-Barnwood



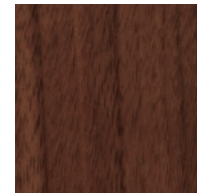
**CB**-Carbon Fiber



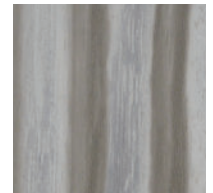
**ES**-Espresso



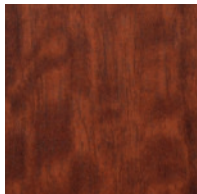
**HK**-Honey Oak



**M**-Maple



**SD**-Silver Driftwood

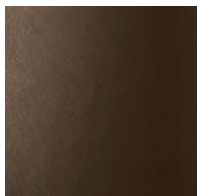


**DC**-Dark Cherry



**KL**-Khaki Leather

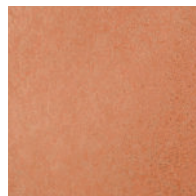
## PREMIUM METALLIC FINISHES



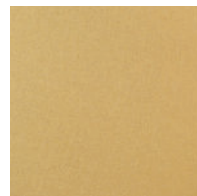
**BR**-Bronze



**GF**-Gold Leaf



**CO**-Copper



**GT**-Gold Textured



**SA**-Stainless Steel

## TEXTURED FINISHES – CANOPY AND POWER CORD COLORS

Specify Silver, White, Black or RAL color for canopy.  
Also specify Gray, White or Black power cord.

## ACRYLIC DIFFUSER CLEANING

**WARNING:** Do not clean with ammonia based cleaners (e.g. Windex®). Use only water or cleaners specifically formulated for cleaning plastics.