

6300 6 in. tube light

translucent LED cylinder with downlight



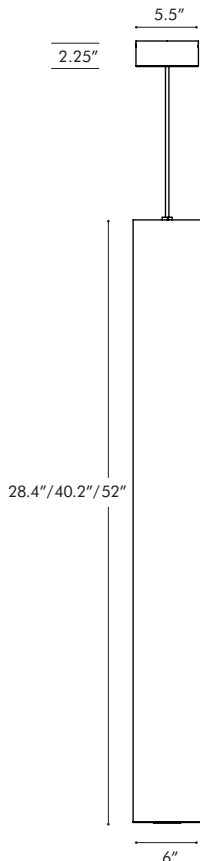
CONSTRUCTION

- o Matte white acrylic diffuser.
- o **W**—white or **S**—silver canopy, with matching cord.
- o Standard mount is 8 ft. adjustable power cord. Order **XP** for extra pendant length.
- o Hard stem also available, 24" standard. Order **BLA**.
- o cUL listed for dry locations only.
- o See page 3 for additional mount and canopy information.

TYPE:	PROJECT:
ORDER NUMBER:	

MODEL#	FINISH	LEDS	DRIVERS	DOWNLIGHT	OTHER OPTION
6314-2 ft. 6315-3 ft. 6316-4 ft.	S-Silver W-White	W30 W35 W40 Red Blue SQ- RGB	D-Standard BDIM-W11 BDMXMOD	B6MR16LED	RD-Remote Driver
Example:					
6309	S	W35	D	B6MR16LED	RD

XP -extra pendant. Cord length (inches):	
BLA -pipe mount, 24 in. standard. Additional pipe length (inches):	
BLA/RD -remote driver with ball aligner. Pipe length (inches):	
XL -custom lumen reduction (specify lumens):	
BTRAXW -Traxon Light Drive (enter quantity):	



MODEL	LENGTH
6314	2 ft.
6315	3 ft.
6316	4 ft.

Specify LED color:

WHITE

- W30**—White (3000° K)
- W35**—White (3500° K)
- W40**—White (4000° K)

COLORS

- R**—Red
- B**—Blue
- SQ**—RGB sequencer

6300 6 in. tube light

translucent LED cylinder with downlight



WHITE LEDS

- Nichia Corp. NFSL757 tight bin chips on aluminum clad boards. 90 CRI.
- **W30** (3000K), **W35** (3500K), and **W40** (4000K) white color temperatures.
- Drivers are programmable constant current, 0–10V, 1% dimming, standard.

DIMMING

- **D**—standard supplied driver. 0–10V, programmable, 1% dimming, 120/277V, 50/60 Hz.
- **BDIM-W11**—Lutron EcoSystem LED14 Series, 1% dimming, fade-to-off.

CUSTOM LUMEN OUTPUT REDUCTION

Factory set custom reduced-lumen output driver configuration. Order **XL**. Specify lumens.

COLOR LEDS

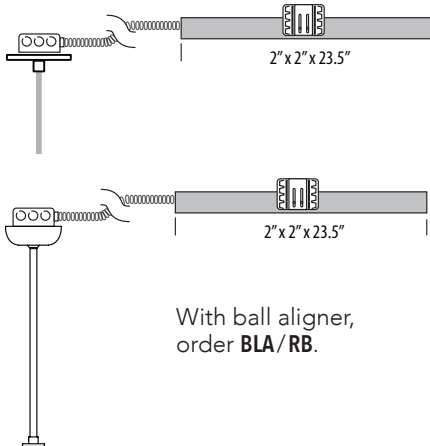
- **Red, Blue** or **SQ**—RGB flexible 5050 tapelights.
- Constant voltage drivers are 12V for single color, 24V for RGB sequencer.
- RGB sequencer requires **BDMXMOD** DMX 512 interface.
- Optional DMX wall box control offered separately (see Traxon Light Drive RGB, below.)

WATTS

MODEL	LENGTH	WHITE WATTS	WHITE DELIVERED LUMENS	RED/BLUE WATTS	RGB WATTS
6314	2 ft.	40	3,506	18	36
6315	3 ft.	47	4,090	27	54
6316	4 ft.	53	4,675	36	72

REMOTE DRIVER

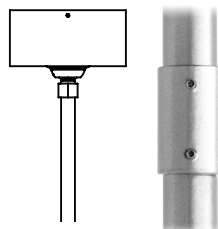
Install driver enclosure (supplied) maximum 18 ft. from fixture; must remain accessible. Order **RD**.



PIPE MOUNT

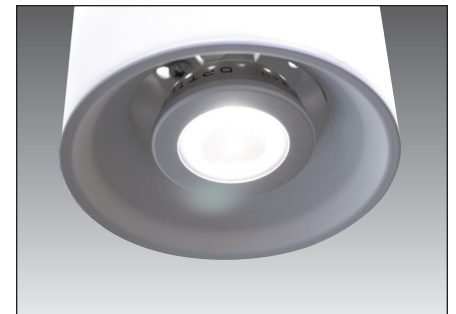
Order **BLA** mount for 3/8" IPS pipe. 24" supplied, standard. Additional length must be specified. Includes ball aligner canopy rated for 75 lbs., and mounts to standard J-boxes.

Not for windy locations. Pipe longer than 8 ft. will be shipped in two pieces—one 8 ft. section plus a second section for the balance—supplied with a painted, threaded pipe coupler, with set screws. Ball aligner. Order **BLA**.



DOWNLIGHT

- 6" downlight
- 9W max.
- 600 lumens
- Downlight does not dim.
- Uses LED MR16, DC 12V, GU5.3 lamps (by others).
- Order **B6MR16LED**.



NOTE: Multiple drivers must be mounted no less than 4 inches apart side-by-side, and 1 inch apart end-to-end, to avoid overheating.

ACRYLIC DIFFUSER CLEANING

WARNING: Do not clean with ammonia based cleaners (e.g. Windex®). Use only water or cleaners specifically formulated for cleaning plastics.

TRAXON/OSRAM LIGHT DRIVE**

- BTRAXW**—white faceplate
- Standalone, wall-mounted (12V power supply included) DMX controller for RGBW LED that provides direct access to fixtures.
- Tune color and brightness with the Light-Drive wheel.
- Fully dimmable white mode button.
- See <http://www.osram.com/ecue> for details.

6300 6 in. tube light

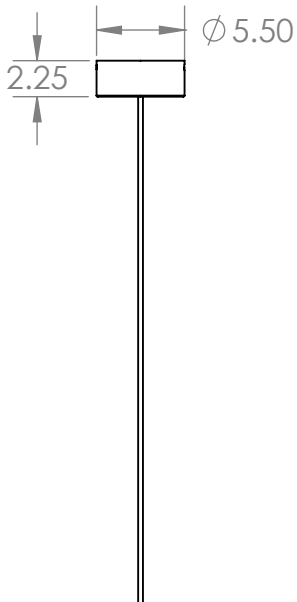
translucent LED cylinder with downlight



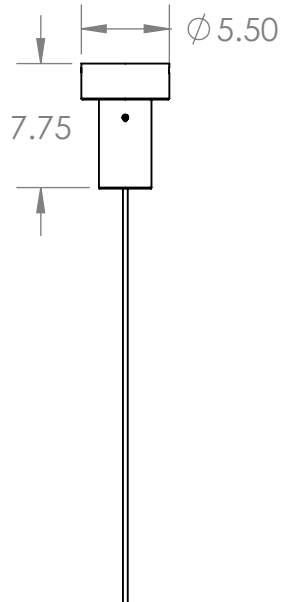
LED CANOPY DIMENSIONS

PENDANT STANDARD

No Downlight

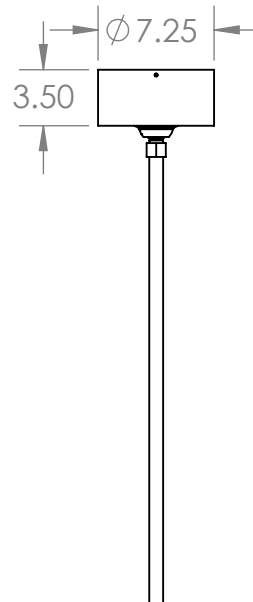


With Downlight



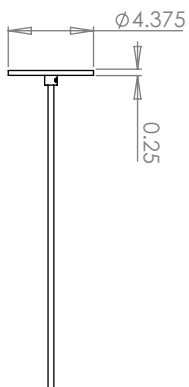
PIPE MOUNT WITH SWIVEL CANOPY

With or Without Downlight

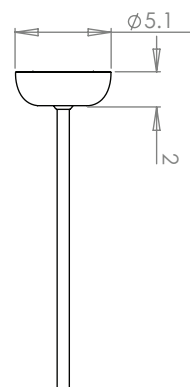


REMOTE DRIVE OPTION - RD & BDMXMOD

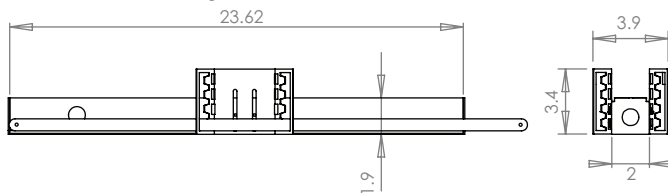
Pendant



Pipe Mount



Remote Driver Housing



Adjustable bar hanger brackets are removable.