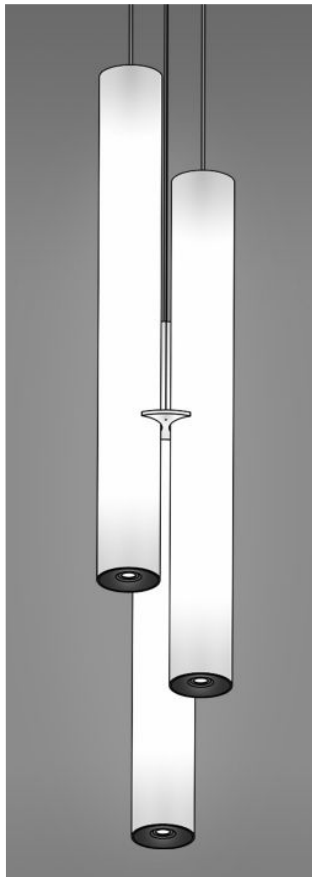


6300 6 in. tube light clusters

translucent LED 3-tube cluster with downlights



CONSTRUCTION

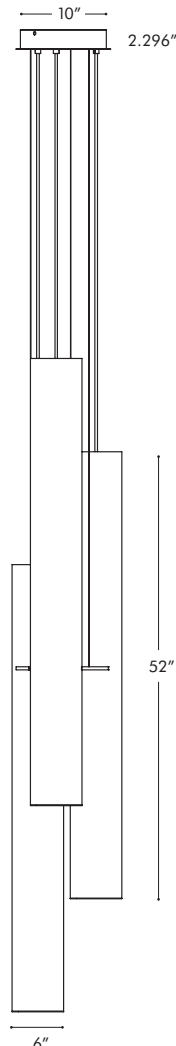
- Matte white acrylic diffuser.
- Clear acrylic collar maintains tube alignment and prevents inter-tube collision. (See back page for details.)
- **W**-white, **S**-silver, or **K**-black, with matching cord.
- Standard mount is 8 ft. adjustable aircraft cable power cord. Order **XP** for extra pendant length.
- Hard stem also available. Order **BLA**.
- cUL listed for dry locations only.
- See page 3 for additional mount and canopy information.

TYPE:	PROJECT:
ORDER NUMBER:	

MODEL#	LENGTHS	FINISH	LEDS	DRIVERS	DOWNLIGHT	OTHER OPTION
B636LC	333 -3/3/3 ft. 334 -3/3/4 ft. 444 -4/4/4 ft.	S -Silver W -White K -Black	W30 W35 W40 Red Blue SQ -RGB	D -Standard BDIM-W11 BDMXMOD	B6MR16LED	RD -Remote Driver

Example:

B636LC	444	S	W35	D	B6MR16LED	RD
---------------	------------	----------	------------	----------	------------------	-----------



XP -extra pendant. Cord length (inches):	
BLA -pipe mount, 24 in. standard. Add'l. pipe length (inches):	
BLA/RD -remote driver with ball aligner. Pipe length (inches):	
XL -custom lumen reduction (specify lumens):	
BTRAXW -Traxon Light Drive (enter quantity):	

B636LC444

Specify LED color:

WHITE

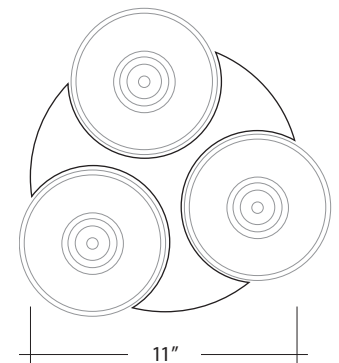
- W30**-White (3000° K)
- W35**-White (3500° K)
- W40**-White (4000° K)

COLORS

- R**-Red
- B**-Blue
- SQ**-RGB sequencer

TUBE COLLAR

Clear acrylic collar maintains alignment and spacing of tubes.



6300 6 in. tube light clusters

translucent LED 3-tube cluster with downlights



WHITE LEDS

- o Nichia Corp. NFSL757 tight bin chips on aluminum clad boards. 90 CRI.
- o **W30** (3000K), **W35** (3500K), and **W40** (4000K) white color temperatures.
- o Drivers are programmable constant current, 0–10V, 1% dimming, standard.
- o White LED standard and dimming drivers mounted inside 3" diameter, 12" long tube housing at ceiling. Mounts to all standard J-boxes.

CUSTOM LUMEN OUTPUT REDUCTION

Factory set custom reduced-lumen output driver configuration. Order **XL**. Specify lumens.

DIMMING

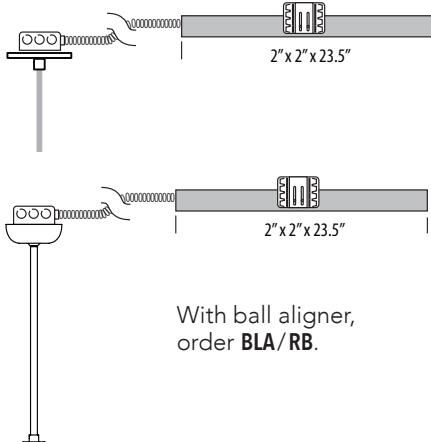
- o **D**—standard supplied driver. 0–10V, programmable, 1% dimming, 120/277V, 50/60 Hz.
- o **BDIM-W11**—Lutron EcoSystem LED14 Series, 1% dimming, fade-to-off.
- o Order **RD** for remote in accessible ceilings or panels.

WATTS

LENGTH	WHITE WATTS	RED/BLUE WATTS	RGB WATTS
2 ft.	24	18	36
3 ft.	36	27	54
4 ft.	48	36	72

REMOTE DRIVER

Install driver enclosure (supplied) maximum 18 ft. from fixture; must remain accessible. Order **RD**.

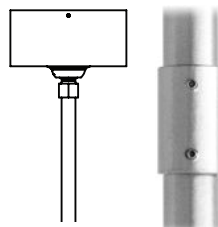


NOTE: Multiple drivers must be mounted no less than 4 inches apart side-by-side, and 1 inch apart end-to-end, to avoid overheating.

PIPE MOUNT

Order **BLA** mount for 3/8" IPS pipe. 24" supplied, standard. Additional length must be specified. Includes ball aligner canopy rated for 75 lbs., and mounts to standard J-boxes.

Not for windy locations. Pipe longer than 8 ft. will be shipped in two pieces—one 8 ft. section plus a second section for the balance—supplied with a painted, threaded pipe coupler, with set screws. Ball aligner. Order **BLA**.



ACRYLIC DIFFUSER CLEANING

WARNING: Do not clean with ammonia based cleaners (e.g. Windex®). Use only water or cleaners specifically formulated for cleaning plastics.

EMERGENCY

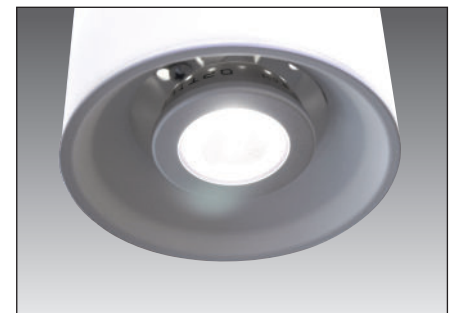
Emergency not available. If EM is required, use inverter (by others).

COLOR LEDS

- o Standard color LED options include **Red** and **Blue**, as well as **SO-RGB** sequencing, controlled with a DMX 512 interface (**BDMXMOD**).
- o Flexible 5050 universal voltage LED tape light. **SO-RGB**=24V. Single color (Red or Blue)=12V.
- o Color LED drivers and DMX modules mounted inside 3" diameter, 19" long, tube housing at ceiling. Mounts to all standard J-boxes.
- o Optional wall box control offered separately (see Traxon Light Drive, below.)

OPTIONAL DOWNLIGHT

- o 4" downlight
- o 9W max.
- o Uses LED MR16, DC 12V, GU5.3 lamps (by others).
- o Downlight does not dim.
- o Order **B6MR16LED**.



TRAXON/OSRAM LIGHT DRIVE**

- o **BTRAXW**—white faceplate
- o Standalone, wall-mounted (12V power supply included) DMX controller for RGBW LED that provides direct access to fixtures.
- o Tune color and brightness with the Light-Drive wheel.
- o Fully dimmable white mode button.
- o See <http://www.osram.com/ecue> for details.

6300 6 in. tube light clusters

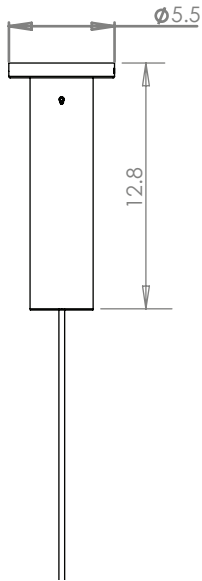
translucent LED 3-tube cluster with downlights



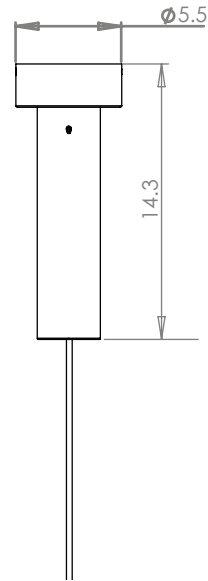
LED CANOPY DIMENSIONS

PENDANT STANDARD

No Downlight

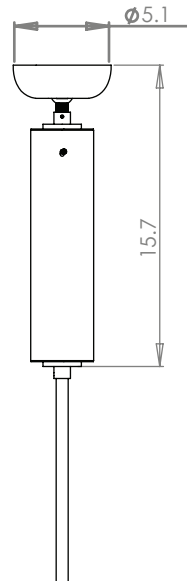


With Downlight

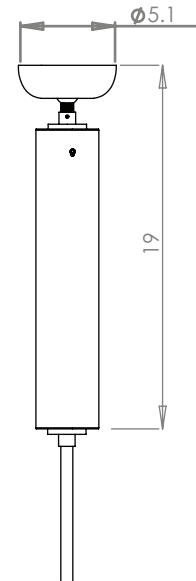


PIPE MOUNT WITH SWIVEL CANOPY

No Downlight

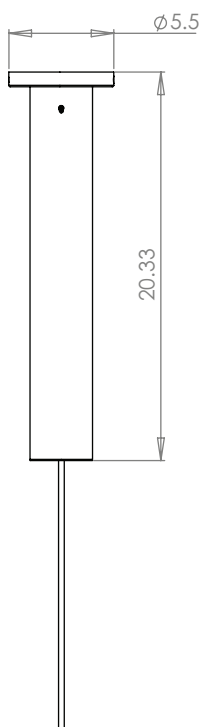


With Downlight

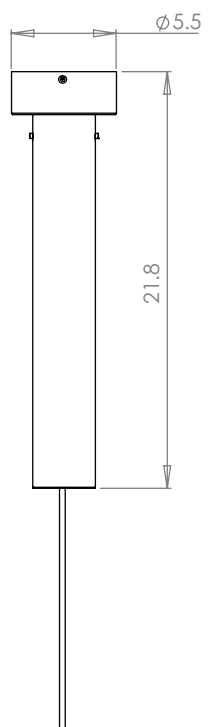


PENDANT WITH DMX

No Downlight

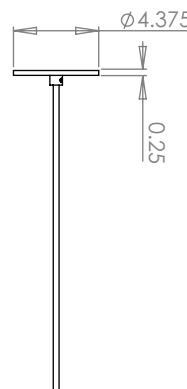


With Downlight

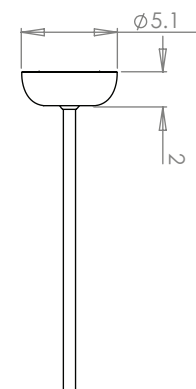


REMOTE DRIVE OPTION - RD & BDMXMOD

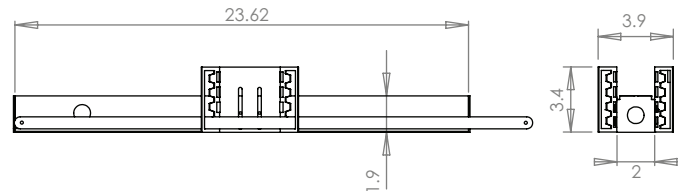
Pendant



Pipe Mount



Remote Driver Housing



Adjustable bar hanger brackets are removable.