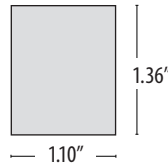


UNO DIRECT LINEAR WHITE LED



End Cap (1:2 scale)

TYPE: _____ **ORDER NUMBER:** _____ **PROJECT:** _____

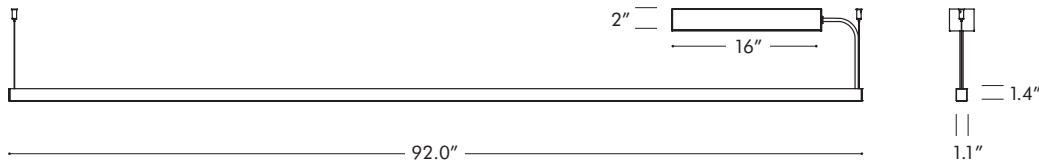
Model#	Finish	LEDs	Drivers	Emergency	Other Options
UL2 –2 ft.	S –Silver	W30	BDIM-W11	EM7	SLRD
UL3 –3 ft.	W –White	W35		EM12	SLRDTB
UL4 –4 ft.	K –Black	W40			S100P
UL6 –6 ft.					
UL8 –8 ft.					
		Red	BDMXMOD		
		Blue			
		SQ –RGB			

Example:

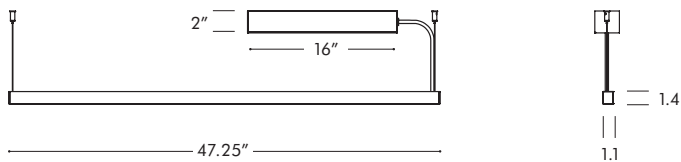
UL8	S	W40	BDIM-W11	EM	SLRD
-----	---	-----	----------	----	------

Continuous Run Length (ft.): _____
 BTRAXW–Traxon Light Drive* (enter quantity): _____
 XP–Extra power cord (in inches; max. 25 ft.): _____

UL8 – 8 ft., 2500 lumens, 48W



UL4 – 4 ft., 1250 lumens, 24W



UNO CONNECTING SECTIONS



RIGHT			MIDDLE			LEFT		
Model #	Size	Length	Model #	Size	Length	Model #	Size	Length
ULR2	2 ft.	23.5"	ULM2	2 ft.	23.5"	ULL2	2 ft.	23.5"
ULR3	3 ft.	35.4"	ULM3	3 ft.	35.4"	ULL3	3 ft.	35.4"
ULR4	4 ft.	47.25"	ULM4	4 ft.	47.25"	ULL4	4 ft.	47.25"
ULR6	6 ft.	70.8"	ULM6	6 ft.	70.8"	ULL6	6 ft.	70.8"
ULR8	8 ft.	95.5"	ULM8	8 ft.	95.5"	ULL8	8 ft.	95.5"

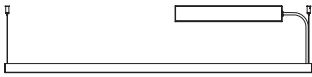
DELRAY
LIGHTING
 INCORPORATED

UNO LINEAR LED. DIRECT

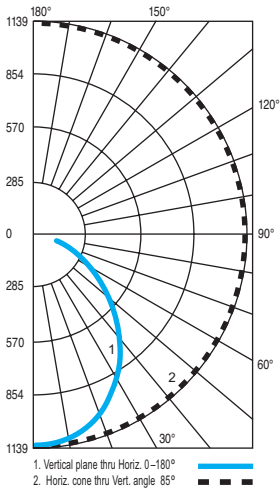
BURBANK,
 CALIFORNIA,
 91505
 WWW.
 DELRAY
 LIGHTING.
 COM

8' WHITE LED

UL8.W35



CP DISTRIBUTION



COEFFICIENTS

	% CEILING 80 (20% FLOOR)		
	% WALL 70	50	30
0	119	119	119
1	109	105	101
2	100	92	86
3	92	82	74
4	85	73	65
5	78	66	58
6	73	60	51
7	68	55	46
8	63	50	42
9	59	46	38
10	56	43	35

NOTES

UL8.W35

3500° K white LEDs
Total fixture lumens: 2,485

Warning: Do not clean with ammonia based cleaners (e.g. Windex®). Use only water or cleaners specifically formulated for cleaning plastics.

Note: Aircraft cable suspension not recommended for outdoor use where fixture will be exposed to water or subject to wind oscillation. Avoid use near HVAC vents, and near corrosive chemical vapors, such as swimming pools.

UNO DIRECT LED CONSTRUCTION

UNO CONSTRUCTION

- Aluminum extrusion with a matte anodized finish. DR acrylic frosted direct lens.
- Suspended with field-adjustable aircraft cable, with push-button glider. 8 ft. gray or white 22 AWG power cord. Each fixture requires its own power feed. Specify **XP** for additional length. (Max. 25 ft.)
- cUL listed for dry locations.

WHITE LEDs

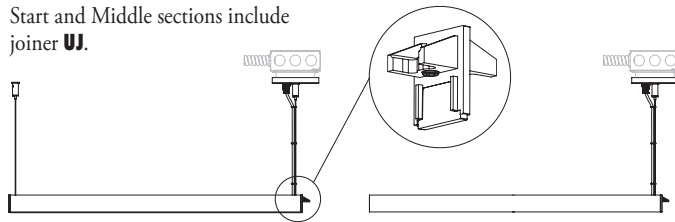
- Nichia Corp. NFSL757 linear board chips. 90 CRI.
- W30** (3000K), **W35** (3500K), and **W40** (4000K) white color temperatures.

CUSTOM LUMEN OUTPUT

Factory-set custom reduced lumen output. Order **XL**. Specify lumens.

CONTINUOUS MOUNT INFORMATION

Start and Middle sections include joiner **UJ**.

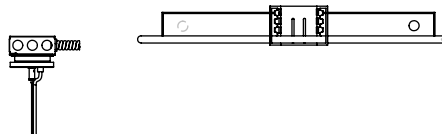


REMOTE DRIVERS

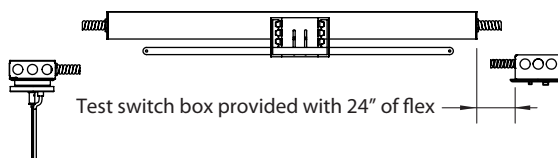
Drivers must be accessible after installation. Multiple driver housings must be mounted no closer than 4" apart side-by-side, or 1" apart end-to-end, to avoid overheating. Driver to canopy distance should not exceed 100 ft., using 10 AWG wire.

SLRD: Standard remote housing has no bar hangers and mounts to structure with screws. Dimensions: 24" length, 2.36" height, 2.65" width.

SLRDTB: Remote housing for T-bar ceiling includes bar hangers. Dimensions: 27" length, 3.4" height, 4.25" width.



EM/SLRDTB: Remote EM housing for T-bar ceiling includes bar hangers and remote test switch. Dimensions: 36" length, 3.4" height, 4.25" width.



UNO LINEAR LM-79

Diameter	Watts	Total Lumens	Delivered Lumens
2'	9.0	1,575	866.25
3'	13.5	2,350	1,292.5
4'	18.0	3,150	1,732.5
6'	27.0	4,700	2,585
8'	36.0	6,300	3,465

COLOR LEDS

- Red, Blue** or **SQ**—RGB flexible 5050 tapelights.
- Constant voltage drivers are 12V for single color, 24V for RGB sequencer.
- RGB sequencer requires **BDMXMOD** DMX 512 interface.
- Optional DMX wall box control offered separately (see Traxon, below).

LED OPTIONS

D—standard supplied driver. Programmable, 0–10V, 120/277V, 50/60 Hz, 1% dimming.

OPTIONAL DRIVER

BDM-W11

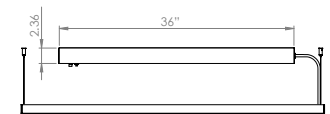
- Lutron EcoSystem LDE14 Series
- Dims to 1%
- Fade to off.

EMERGENCY BATTERY PACK

For 4' through 8' fixtures only. Ignites LEDs for 90 minutes. Adds additional length to driver housing. *Voltage must be specified.*

EM7—7W for 90 minutes.

EM12—12W for 90 minutes.



DRIVER HOUSING DIMENSIONS

Standard:
16" x 2.36"

Standard **EM**:
32" x 2.36"

OPTIONAL J-BOX COVER

Cover plate mounts to maximum 4" square J-box. Ballast housing mounts to wall on top of cover plate, which may be painted to match ceiling or wall, and includes two mounting spacers to offset cover thickness. Order **S100P**.

