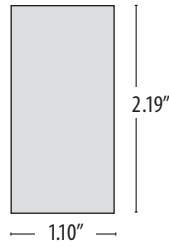


## DOS DIRECT/INDIRECT LINEAR WHITE LED



End Cap (1:2 scale)

**TYPE:** \_\_\_\_\_ **ORDER NUMBER:** \_\_\_\_\_ **PROJECT:** \_\_\_\_\_

Model#	Finish	LEDs	Drivers	Emergency	Other Options
<b>UDL2</b> –2 ft.	<b>S</b> –Silver	<b>W30</b>	<b>D</b> –Standard	<b>EM7</b>	<b>SLRD</b>
<b>UDL3</b> –3 ft.	<b>W</b> –White	<b>W35</b>	<b>BDIM-W11</b>	<b>EM12</b>	<b>SLRDTB</b>
<b>UDL4</b> –4 ft.	<b>K</b> –Black	<b>W40</b>			<b>S100P</b>
<b>UDL6</b> –6 ft.					<b>SS</b>
<b>UDL8</b> –8 ft.					
		Red	<b>BDMXMOD</b>		
		Blue			
		<b>SQ</b> –RGB			

Example:

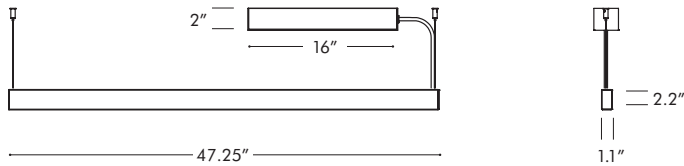
UDL8	S	W40	BDIM-W9	EM	SLRD
------	---	-----	---------	----	------

Continuous Run Length (ft.): \_\_\_\_\_

**BTRAXW**–Traxon Light Drive\* (enter quantity): \_\_\_\_\_

**XP**–Extra power cord (in inches; max. 25 ft.): \_\_\_\_\_

**UDL4** – 4 ft., 2500 lumens, 48W



### DOS CONNECTING SECTIONS



RIGHT			MIDDLE			LEFT		
Model #	Size	Length	Model #	Size	Length	Model #	Size	Length
<b>UDLR2</b>	2 ft.	23.5"	<b>UDLM2</b>	2 ft.	23.5"	<b>UDLL2</b>	2 ft.	23.5"
<b>UDLR3</b>	3 ft.	35.4"	<b>UDLM3</b>	3 ft.	35.4"	<b>UDLL3</b>	3 ft.	35.4"
<b>UDLR4</b>	4 ft.	47.25"	<b>UDLM4</b>	4 ft.	47.25"	<b>UDLL4</b>	4 ft.	47.25"
<b>UDLR6</b>	6 ft.	70.8"	<b>UDLM6</b>	6 ft.	70.8"	<b>UDLL6</b>	6 ft.	70.8"
<b>UDLR8</b>	8 ft.	95.5"	<b>UDLM8</b>	8 ft.	95.5"	<b>UDLL8</b>	8 ft.	95.5"

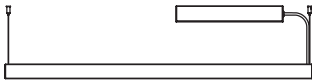
**DELRAY  
LIGHTING  
INCORPORATED**

**DOS LINEAR LED**

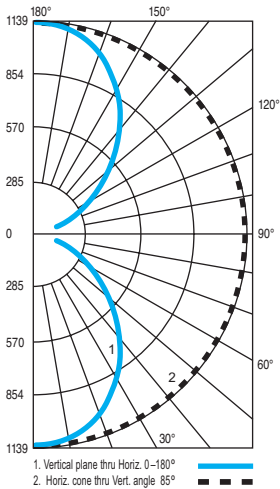
BURBANK,  
CALIFORNIA,  
91505  
WWW.  
DELRAY  
LIGHTING.  
COM

## 8' WHITE LED

### UDL8.W35



### CP DISTRIBUTION



### COEFFICIENTS

% CEILING 80 (20% FLOOR)	% WALL 70 (20% FLOOR)		
	70	50	30
0	107	107	107
1	98	94	90
2	90	82	76
3	82	73	65
4	75	64	57
5	69	58	50
6	64	52	44
7	59	47	39
8	55	43	35
9	51	39	32
10	48	36	29

### NOTES

#### UDL8.W35

3500° K white LEDs  
Total fixture lumens: 4970

**Warning:** Do not clean with ammonia based cleaners (e.g. Windex®). Use only water or cleaners specifically formulated for cleaning plastics.

**Note:** Aircraft cable suspension not recommended for outdoor use where fixture will be exposed to water or subject to wind oscillation. Avoid use near HVAC vents, and near corrosive chemical vapors, such as swimming pools.

## DOS DIRECT LED CONSTRUCTION

### DOS CONSTRUCTION

- Aluminum extrusion with a matte anodized finish. DR acrylic frosted lenses.
- Suspended with field-adjustable aircraft cable, with push-button glider. 8 ft. gray or white 22 AWG power cord. Each fixture requires its own power feed. Specify **XP** for additional length. (Max. 25 ft.)
- cUL listed for dry locations.

### WHITE LEDs

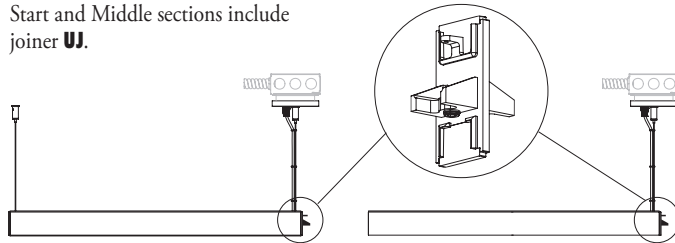
- Nichia Corp. NFSL757 linear board chips. 90 CRI.
- W30** (3000K), **W35** (3500K), and **W40** (4000K) white color temperatures.

### CUSTOM LUMEN OUTPUT

Factory-set custom reduced lumen output. Order **XL**. Specify lumens.

### CONTINUOUS MOUNT INFORMATION

Start and Middle sections include joiner **UJ**.

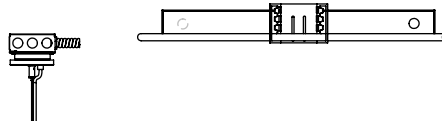


### REMOTE DRIVERS

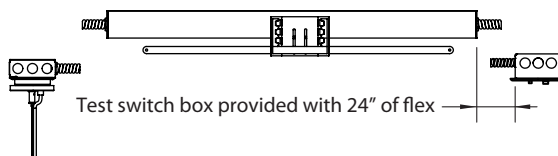
Drivers must be accessible after installation. Multiple driver housings must be mounted no closer than 4" apart side-by-side, or 1" apart end-to-end, to avoid overheating. Driver to canopy distance should not exceed 100 ft., using 10 AWG wire. **NOTE:** **SS**—Separate Switch option adds 24" to all housing lengths.

**SLRD:** Standard remote housing has no bar hangers and mounts to structure with screws. Dimensions: 24" length, 2.36" height, 2.65" width.

**SLRDTB:** Remote housing for T-bar ceiling includes bar hangers. Dimensions: 27" length, 3.4" height, 4.25" width.



**EM/SLRDTB:** Remote EM housing for T-bar ceiling includes bar hangers and remote test switch. Dimensions: 36" length, 3.4" height, 4.25" width.



### LM-79

Diameter	Watts	Total Lumens	Delivered Lumens
2'	18.0	3,150	1,732.5
3'	27.0	4,700	2,585
4'	36.0	6,300	3,465
6'	54.0	9,400	5,170
8'	72.0	12,600	6,930

### COLOR LEDS

- Red, Blue** or **SQ**—RGB flexible 5050 tapelights.
- Constant voltage drivers are 12V for single color, 24V for RGB sequencer.
- RGB sequencer requires **BDMXMOD** DMX 512 interface.
- Optional DMX wall box control offered separately (see Traxon, below).

### LED OPTIONS

**D**—standard supplied driver. Programmable, 0–10V, 120/277V, 50/60 Hz, 1% dimming.

### OPTIONAL DRIVER

#### BDIM-W11

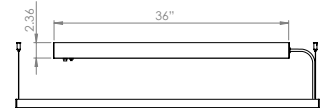
- Lutron EcoSystem LDE14 Series
- Dims to 1%
- Fade to off.

### EMERGENCY BATTERY PACK

For 4' through 8' fixtures only. Ignites LEDs for 90 minutes. Adds additional length to driver housing. *Voltage must be specified.*

**EM7**—7W for 90 minutes.

**EM12**—12W for 90 minutes.



### SEPARATE SWITCHING

Control uplight separately from downlight. Order **SS**.

**NOTE:** **SS**—Separate Switch option adds 24" to all housing lengths.

### OPTIONAL J-BOX COVER

Cover plate mounts to maximum 4" square J-box. Ballast housing mounts to wall on top of cover plate, which may be painted to match ceiling or wall, and includes two mounting spacers to offset cover thickness. Order **STOOP**.

