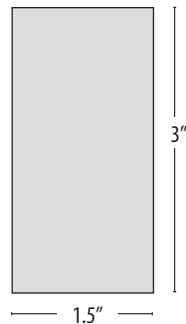


STICK COMPLETA SEAMLESS LINEAR LED



End Cap (1:2 scale)

TYPE: _____ **ORDER NUMBER:** _____ **PROJECT:** _____

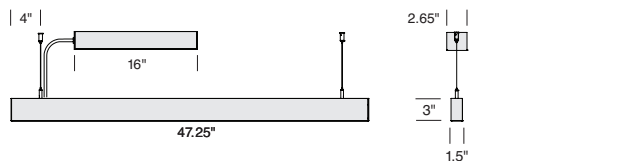
Model	Length	LED	LO/HO	Drivers	Emergency	Options
ST2P –Pendant	2–2 ft.	W30	LO	BDIM-W11	EM7	SLRD
ST2PM –Pendant Middle	3–3 ft.	W35	HO		EM12	SP100
ST2S –Surface	4–4 ft.	W40				
ST2SM –Surface Middle	6–6 ft. 8–8 ft.					
		R B SQ		BDMXMOD		

Example:

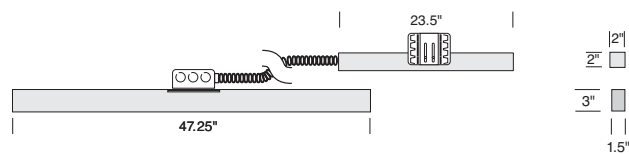
Continuous Run Length (ft.): _____

- BTRAXW**–Traxon Light Drive* (enter quantity): _____
- XP**–Extra power cord (in inches; max. 25 ft.): _____

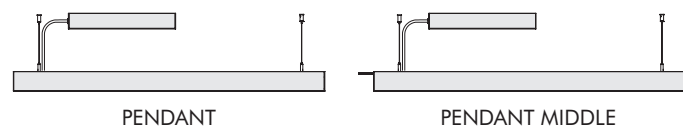
ST2P – 4 ft., Pendant



ST2S – 4 ft., Surface



MEDIA CONNECTING SECTIONS



Model #	Size	Length	Model #	Size	Length
ST2P2	2 ft.	23.5"	ST2PM2	2 ft.	23.5"
ST2P3	3 ft.	35.4"	ST2PM3	3 ft.	35.4"
ST2P4	4 ft.	47.25"	ST2PM4	4 ft.	47.25"
ST2P6	6 ft.	70.8"	ST2PM6	6 ft.	70.8"
ST2P8	8 ft.	94.5"	ST2PM8	8 ft.	94.5"

DELRAY LIGHTING INCORPORATED
COMPLETA LED

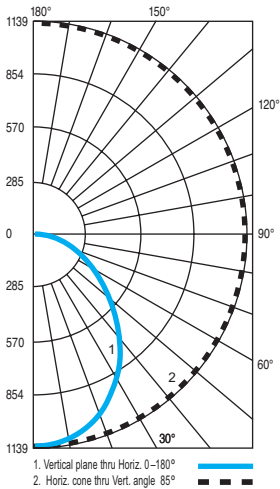
BURBANK,
 CALIFORNIA,
 91505
 WWW.
 DELRAY
 LIGHTING.
 COM

4' WHITE LED

ST2P4HOW40



CP DISTRIBUTION



COEFFICIENTS

% CEILING 80 (20% FLOOR)

% WALL 70	50	30
0	119	119
1	109	105
2	100	93
3	92	82
4	85	73
5	78	66
6	73	60
7	68	55
8	63	50
9	59	46
10	56	43

NOTES

ST2P4HOW40

White LEDs
Total fixture lumens: 2444
CRI: 90.0
R9 ≥ 50.0

Warning: Do not clean with ammonia based cleaners (e.g. Windex®). Use only water or cleaners specifically formulated for cleaning plastics.

Note: Aircraft cable suspension not recommended for outdoor use where fixture will be exposed to water or subject to wind oscillation. Avoid use near HVAC vents, and near corrosive chemical vapors, such as swimming pools.

COMPLETA LED CONSTRUCTION

ST2 CONSTRUCTION

- Extruded aluminum outer housing with direct white frosted acrylic diffuser for wide beam spread. 8 ft. gray or white 18 AWG adjustable power cord and AC cables with push button grippers supplied, standard. Specify **XP** for additional length (25 ft. max.).
- Driver mounts to ceiling, conduit feed to any side. Replaces J-box for clean appearance in open ceiling installs.

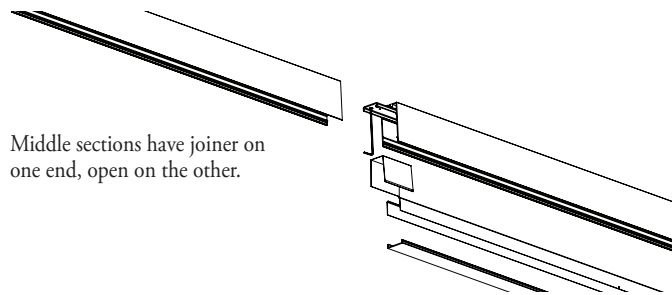
WHITE LEDs

- Nichia Corp. NFSL757 linear board chips. 90 CRI.
- W30** (3000K), **W35** (3500K), and **W40** (4000K) white color temperatures.

CUSTOM LUMEN OUTPUT

Factory-set custom reduced lumen output. Order **XL**. Specify lumens.

CONTINUOUS MOUNT INFORMATION

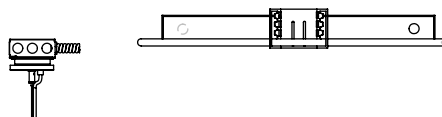


REMOTE DRIVERS

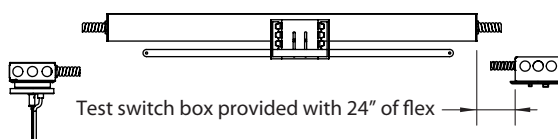
Drivers must be accessible after installation. Multiple driver housings must be mounted no closer than 4" apart side-by-side, or 1" apart end-to-end, to avoid overheating. Driver to canopy distance should not exceed 100 ft., using 10 AWG wire.

SLRD: Standard remote housing has no bar hangers and mounts to structure with screws. Dimensions: 24" length, 2.36" height, 2.65" width.

SLRDTB: Remote housing for T-bar ceiling includes bar hangers. Dimensions: 27" length, 3.4" height, 4.25" width.



EM/SLRDTB: Remote EM housing for T-bar ceiling includes bar hangers and remote test switch. Dimensions: 36" length, 3.4" height, 4.25" width.



LM-79

LENGTH	Total Lumens	Delivered Lumens	Watts
2 ft. LO	1575	819	9W
2 ft. HO	2350	1222	13.5W
3 ft. LO	2350	1222	13.5W
3 ft. HO	3525	1833	20W
4 ft. LO	3150	1638	18W
4 ft. HO	4700	2444	27W

COLOR LEDS

- Red, Blue or **SQ**—RGB flexible 5050 tapelights.
- Constant voltage drivers are 12V for single color, 24V for RGB sequencer.
- RGB sequencer requires **BDMXMOD** DMX 512 interface.
- Optional DMX wall box control offered separately (see Traxon, below.)

LED OPTIONS

D—standard supplied driver. Programmable, 0–10V, 120/277V, 50/60 Hz, 1% dimming.

OPTIONAL DRIVER

BDIM-W11

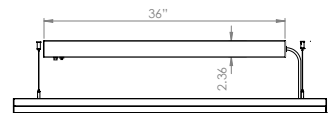
- Lutron EcoSystem LDE1 Series
- Dims to 1%
- Fade to off.

EMERGENCY BATTERY PACK

For 4' through 8' fixtures only. Ignites LEDs for 90 minutes. Adds additional length to driver housing. Voltage must be specified.

EM7—7W for 90 minutes.

EM12—12W for 90 minutes.



OPTIONAL J-BOX COVER

Cover plate mounts to maximum 4" square J-box. Ballast housing mounts to wall on top of cover plate, which may be painted to match ceiling or wall, and includes two mounting spacers to offset cover thickness. Order **STOOP**.

