

BIG LIGHT OPAL CYLINDER WITH DOWNLIGHT

**DELRAY
LIGHTING
INCORPORATED**

BW6300



BIG LIGHT WALL MOUNT CYLINDER

Extruded aluminum center tube is a lamp holder and electronic ballast housing, ballast removes from bottom. Extruded aluminum top and bottom cylinder is 1/4" thick with aluminum cover plates and has a silver powder coat finish. Fixtures use three T8 lamps wrapped by a seamless cylindrical

Acrylic diffuser. See order info for downlight options. Separate switch leg for downlight is standard. PAR lamps are replaceable without removing cover. Dimming ballasts available for 17 and 32W lamps only. U.L. / cU.L. listed for dry locations.

TYPE:

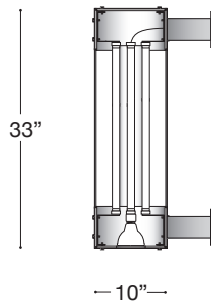
PROJECT:

ORDER NUMBER:

Model#	Voltage	Length In Inches	Option
	1-120V		D3-Dimming
	2-277V		

Example:

BW6320	2	96	D3
--------	---	----	----



BW6301

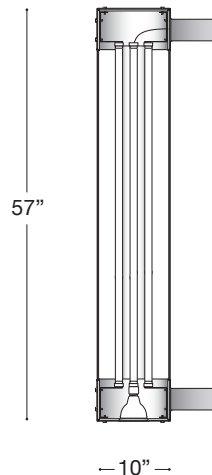
Three 17W T8 lamps, with one 75W PAR30S. 120V only.

BW6321

Three 17W T8 lamps, with one 39W Metal Halide PAR30.

BW6331

Three 17W T8 lamps, with no downlight.



BW6302

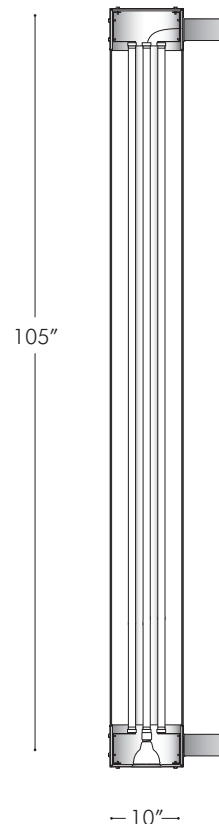
Three 32W T8 lamps, with one 75W PAR30S. 120V only.

BW6322

Three 32W T8 lamps, with one 39W Metal Halide PAR30.

BW6332

Three 32W T8 lamps, with no downlight.



BW6300

Three 59W T8 lamps, with one 75W PAR30S. 120V only.

BW6322

Three 59W T8 lamps, with one 39W Metal Halide PAR30.

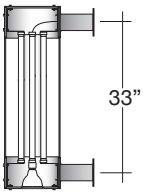
BW6332

Three 59W single pin T8 lamps, with no downlight.

BURBANK,
CALIFORNIA,
91505
WWW.
DELRAY
LIGHTING.
COM

3-17 WATT

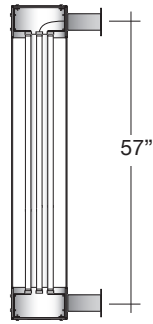
3-17W T8



BW6331
3-17W T8
G13 Base
Total lumens: 4200 mean
Total luminaire efficiency: 57.3%

3-32 WATT

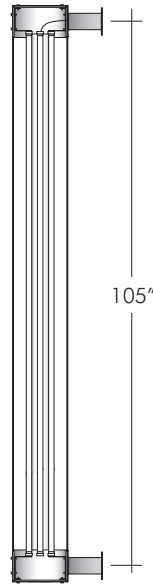
3-32W T8



BW6330
3-32W T8
G13 Base
Total lumens: 8850 mean
Total luminaire efficiency: 57.4%

3-59 WATT

3-59W T8



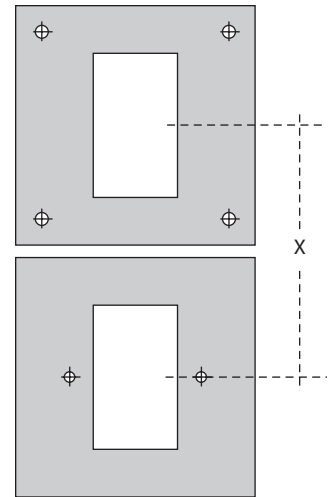
BW6332
3-59W T8
Fa8 Base
Total lumens: 17700 mean
Total luminaire efficiency: 57.3%

DIMMING

- D3** Advance Mark X
- Wattage: 3-17 or 3-32
 - Voltage: 120 or 277 (must be specified)
 - Range: 5-100%
 - Control wires: none
 - Dimmers: standard incandescent

MOUNT INSTRUCTIONS

Upper bracket mounts to wall or structure with 1/4" anchor bolts (by others). Pattern: 4".

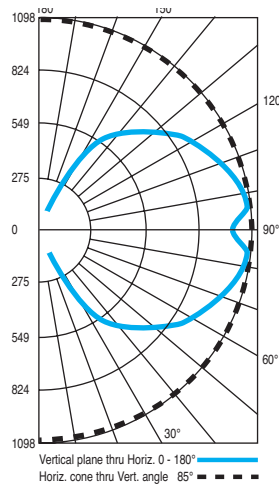
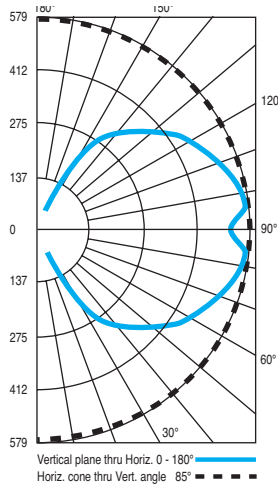
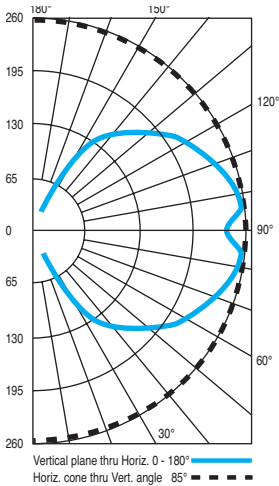


Lower plate mounts to J-box (by others) with 3" mud ring. Pattern: 2.75", holes mounted horizontally.

X = 28.5" - 3' model
X = 52.5" - 5' model
X = 100.5" - 9' model

Note: Power enters through lower arm only.

CP DISTRIBUTION



COEFFICIENTS OF UTILIZATION

% CEILING 80 (20% FLOOR)	% WALL 70 (20% FLOOR)		
	50	30	30
0	61	61	61
1	52	47	43
2	45	39	34
3	41	33	28
4	37	29	23
5	33	25	19
6	31	22	17
7	28	20	15
8	26	18	13
9	24	16	11
10	22	15	10

% CEILING 80 (20% FLOOR)	% WALL 70 (20% FLOOR)		
	50	30	30
0	61	61	61
1	52	47	43
2	45	39	34
3	41	33	28
4	37	29	23
5	33	25	19
6	31	22	17
7	28	20	15
8	26	18	13
9	24	16	11
10	22	15	10

% CEILING 80 (20% FLOOR)	% WALL 70 (20% FLOOR)		
	50	30	30
0	61	61	61
1	52	47	43
2	45	39	34
3	41	33	28
4	37	29	23
5	33	25	19
6	31	22	17
7	28	20	15
8	26	18	13
9	24	16	11
10	22	15	10

ACRYLIC DIFFUSER CLEANING

Warning: Do not clean with ammonia based cleaners (e.g. Windex®). Use only water or cleaners specifically formulated for cleaning plastics.