

6" T5 CYLINDER WITH DOWNLIGHT

DELRAY
LIGHTING
INCORPORATED

6300-6" T5



TYPE:

PROJECT:

ORDER NUMBER:

Model#	Wattage	Finish	Voltage	Dimming	Downlight
	14	S -silver	1 -120V	SD5	B6MR16LED
	21	W -white	2 -277V	SD8	
	24			SD9	
	28			SD11	
	39				
	54				

Example:

6313	54	W	2	D3	B6MR16LED
------	----	---	---	----	-----------

Other Options

BLA-pipe mount

B6XP-extra cord length
(inches):

CONSTRUCTION

- Matte white acrylic diffuser provides even illumination.
- cUL listed for damp locations.

CANOPY

- **W**-white or **S**-silver, with matching cord.
- Flat, 4.4" o.d. Mounts to standard J-box.
- Standard mount is 6 ft. power cord. Order **B6XP** for extra power cord length.
- Hard stem also available. Order **BLA**.

BALLASTS

- Ballasts are program start, HPF electronic, mounted to internal socket/ballast housing, accessible through diffuser.
- See back page for dimming options.
- Emergency not available.

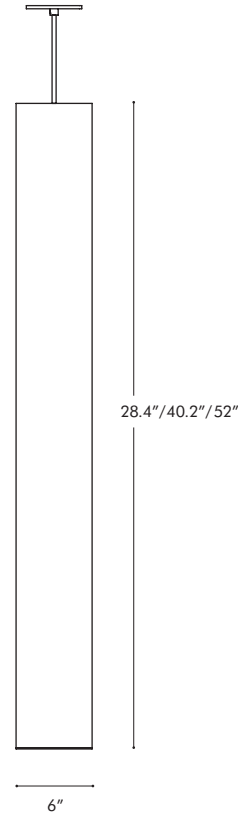
OPTIONAL DOWNLIGHT

- Order **B6MR16LED**.
- 9W max.
- Uses LED MR16 2-pin lamps (by others).
- Downlight does not dim.

6311-2 ft. T5, 2x 14/24W

6312-3 ft. T5, 2x 21/39W

6313-4 ft. T5, 2x 28/54W



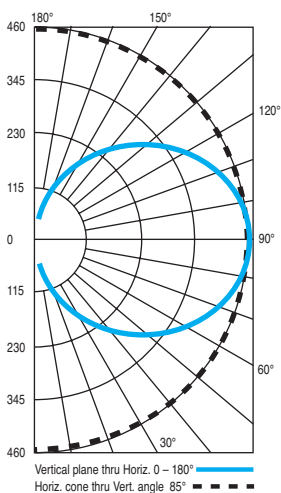
BURBANK,
CALIFORNIA,
91505
WWW.
DELRAY
LIGHTING.
COM

T5

6311
6312
6313



CP DISTRIBUTION



COEFFICIENTS

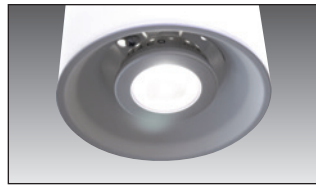
% CEILING 80 (20% FLOOR)			
% WALL	70	50	30
0	80	80	80
1	68	63	59
2	61	53	47
3	54	45	38
4	49	39	32
5	45	34	27
6	41	30	23
7	37	27	20
8	35	24	18
9	32	22	16
10	30	20	14

NOTES

6313
2-28W T5
T5 miniature bi-pin socket
Total lumens: 4378 mean
Total luminaire efficiency: 75%

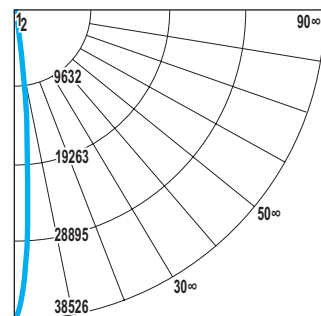
MR16LED

B6MR16LED—6° downlight.
9W max.

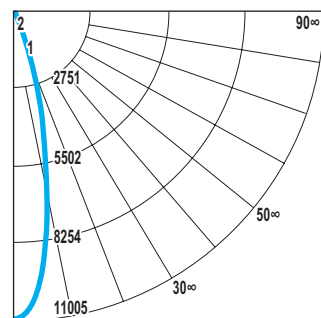


CP DISTRIBUTION

SPOT



FLOOD



ACRYLIC DIFFUSER CLEANING

Warning: Do not clean with ammonia based cleaners (e.g. Windex®). Use only water or cleaners specifically formulated for cleaning plastics.

OPTIONS

DIMMING

Cat. #	Type	Wattage
SD5	Advance Mark VII	*
SD8	Lutron Hi Lume H3D	*
SD9	Lutron Eco System EC5	*
SD11	Lutron EcoSystem H-Series EHD	*

* All wattages (14, 21, 24, 28, 39, 54)

MOUNTING OPTIONS

PIPE MOUNT

Order **BLA** mount for 3/8" IPS pipe. Length must be specified. Includes ball aligner canopy rated for 75 lbs. and mounts to standard J-boxes (below, left). Not for windy locations.

Pipe longer than 8 ft. will be shipped in two pieces—one 8 ft. section plus a second section for the balance—supplied with a painted, threaded pipe coupler, with set screws (below, right).



MULTI-TUBE CONFIGURATIONS

Standard and custom solid acrylic collars may be added for decoration and earthquake code compliance. Consult factory for details.

