

## 6" LED CYLINDER WITH DOWNLIGHT

**DELRAY**  
**LIGHTING**  
INCORPORATED

**6300-6" LED**



**TYPE:**

**PROJECT:**

**ORDER NUMBER:**

Model#	Finish	LEDs	Dimming	Downlight
<b>6314</b> –2 ft.	<b>S</b> –Silver	<b>W30</b>	<b>BDIM-W9</b>	<b>B6MR16LED</b>
<b>6315</b> –3 ft.	<b>W</b> –White	<b>W35</b>	<b>BDIM-W11</b>	
<b>6316</b> –4 ft.		<b>W40</b>		
-----				
<b>6314</b> –2 ft.	<b>S</b> –Silver	<b>Red</b>	<b>BDMXMOD</b>	
<b>6315</b> –3 ft.	<b>W</b> –White	<b>Blue</b>		
<b>6316</b> –4 ft.		<b>SQ</b> –RGB		

**Example:**

6316	S	W35	BDIM-W9	B4MR16LED
------	---	-----	---------	-----------

**Other Options:**

- RD**–remote driver
- BLA/RD**–remote driver with ball aligner. Pipe length (in inches): \_\_\_\_\_
- BLA**–pipe mount. Pipe length (in inches): \_\_\_\_\_
- RBRD**–red braided cord. Length (in inches): \_\_\_\_\_
- XP**–extra pendant. Cord length (in inches): \_\_\_\_\_
- BTRAXW**–Traxon Light Drive, white\* (order separately) Enter quantity: \_\_\_\_\_

### CONSTRUCTION

- Matte white acrylic diffuser.
- cUL listed for dry locations only.

### CANOPY

- **W**–white or **S**–silver, with matching cord.
- Standard mount is 8 ft. adjustable power cord. Order **XP** for extra pendant length.
- Hard stem also available. Order **BLA**.
- See page 3 for additional mount and canopy information.

### WHITE LEDs

- Nichia Corp. NFSL757 tight bin chips on aluminum clad boards. 90 CRI.
- **W30** (3000K), **W35** (3500K), and **W40** (4000K) white color temperatures.
- Drivers are programmable constant current, 0–10V, 1% dimming, standard.

### CUSTOM LUMEN

#### OUTPUT REDUCTION

- Factory set custom reduced-lumen output driver configuration. Order **XL**.  
*Specify lumens.*

### COLOR LEDs

- **Red**, **Blue** or **SQ**–RGB flexible 5050 tapelights.
- Constant voltage drivers are 12V for single color, 24V for RGB sequencer.
- RGB sequencer requires **BDMXMOD** DMX 512 interface.
- Optional DMX wall box control offered separately (see Traxon, page 2.)

### LEDs, WHITE

Model	Length
<b>6314</b>	2 ft.
<b>6315</b>	3 ft.
<b>6316</b>	4 ft.

*Specify LED color:*

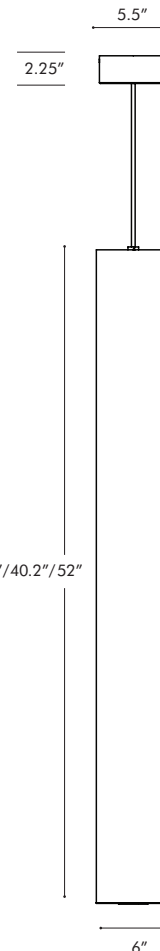
- W30**–White (3000° K)
- W35**–White (3500° K)
- W40**–White (4000° K)

### LEDs, COLOR

Model	Length	Red/Blue Watts	RGB Watts
<b>6314</b>	2 ft.	18	36
<b>6315</b>	3 ft.	27	54
<b>6316</b>	4 ft.	36	72

*Specify LED color:*

- SQ**–RGB sequencer
- Red**
- Blue**



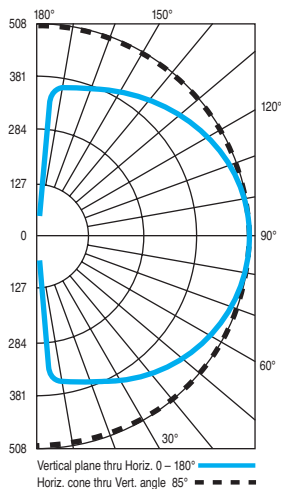
**BURBANK,**  
**CALIFORNIA,**  
**91505**  
**WWW.**  
**DELRAY**  
**LIGHTING.**  
**COM**

## LED

6316.W35 - 4 ft.



## CP DISTRIBUTION



## COEFFICIENTS

% CEILING 80 (20% FLOOR)			
% WALL	70	50	30
0	107	107	107
1	93	87	81
2	83	73	65
3	75	63	54
4	68	55	45
5	62	48	39
6	56	43	34
7	52	38	29
8	48	35	26
9	45	31	23
10	42	29	21

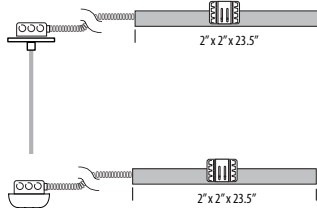
## NOTES

6316.W35 - 4 ft.  
 3500° K white LED  
 Delivered lumens: 7,013  
 CRI: 90.0  
 R9 ≥ 50.0

## MOUNT OPTIONS - 6" SLIM TUBES

### REMOTE DRIVER

Install driver enclosure (supplied) maximum 18 ft. from fixture; must remain accessible.  
 Order **RD**.



With ball aligner, order **BLA/RB**.

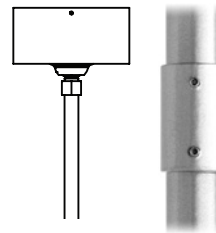
**NOTE:** Multiple drivers must be mounted no less than 4 inches apart side-by-side, and 1 inch apart end-to-end, to avoid overheating.

### PIPE MOUNT

Order **BLA** mount for 3/8" IPS pipe. Length must be specified. Includes ball aligner canopy rated for 75 lbs. and mounts to standard J-boxes. Not for windy locations.

Pipe longer than 8 ft. will be shipped in two pieces—one 8 ft. section plus a second section for the balance—supplied with a painted, threaded pipe coupler, with set screws.

Ball aligner. Order **BLA**.



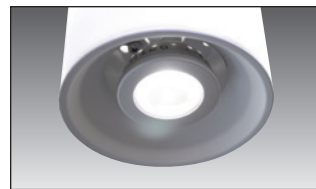
## WHITE LED WATTS / LUMENS

Length	Watts	Delivered Lumens
2'	36	3,506
3'	42	5,234
4'	48	7,013

### MR16 DOWNLIGHT

**B6MR16LED**—4" downlight

- 9W max.
- Uses LED MR16, DC 12V, GU5.3 lamps (by others).
- Downlight does not dim.



### RED BRAIDED CORD

Red braided power cord. Order **RBRD**.



### ACRYLIC DIFFUSER CLEANING

**Warning:** Do not clean with ammonia based cleaners (e.g. Windex®). Use only water or cleaners specifically formulated for cleaning plastics.

## LED OPTIONS

### DIMMING DRIVERS

120/277V, 50/60 Hz.

### STANDARD DIMMING

Programmable, 0–10V, dims to 1%.

### LUTRON DIMMING DRIVERS

#### BDIM-W9

- Lutron Hi-Lume L3DA Series, 3-wire
- Dims to 1%

#### BDIM-W11

- Lutron EcoSystem LDE14 Series
- Dims to 1%
- Fade to off.

## RGB OPTIONS

### BDMXMOD

- Osram part no. OTDMXRGB supplied.
- DMX control interface for RGB LED.
- Provides DMX control with protocols that meet USITT DMX-512A or DMX512 (DIN 56930-2). No converter is required. DMX controls by others.
- A second 4-conductor control cable to fixture canopy is supplied.

### TRAXON LIGHT-DRIVE RGB

(order separately)

### BTRAXW—white faceplate

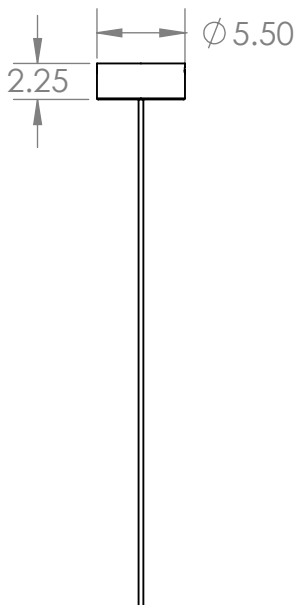
- Standalone, wall-mounted (12V power supply included) DMX controller for RGB LED that provides direct access to fixtures.
- Tune color and brightness with the Light-Drive wheel.
- Fully dimmable white mode button.
- See [www.traxon-usa.com](http://www.traxon-usa.com) for details.



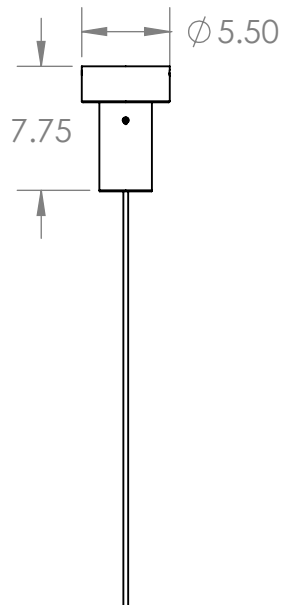
# 6300 SLIM TUBES – LED CANOPY DIMENSIONS

## PENDANT STANDARD

No Downlight

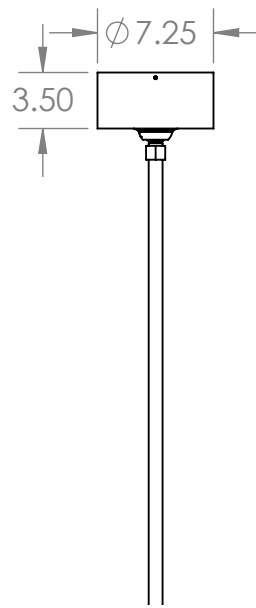


With Downlight



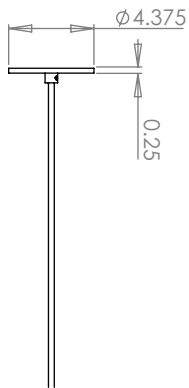
## PIPE MOUNT WITH SWIVEL CANOPY

With or Without Downlight

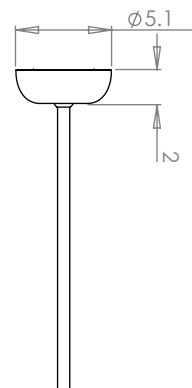


## REMOTE DRIVER OPTION – RD & BDMXMOD

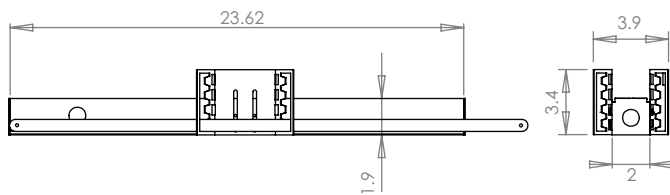
Pendant



Pipe Mount



Remote Driver Housing



Adjustable bar hanger brackets are removable.