

4" LED CYLINDER WITH DOWNLIGHT

DELRAY
LIGHTING
INCORPORATED

6300-4" LED



TYPE:

PROJECT:

ORDER NUMBER:

Model#	Finish	LEDs	Dimming	Downlight
6307 –2 ft.	S –Silver	W30	BDIM-W9	B4MR16LED
6308 –3 ft.	W –White	W35	BDIM-W11	
6309 –4 ft.		W40		

6307 –2 ft.	S –Silver	Red	BDMXMOD	
6308 –3 ft.	W –White	Blue		
6309 –4 ft.		SQ –RGB		

Example:

6309	S	W35	BDIM-W9	B4MR16LED
------	---	-----	---------	-----------

Other Options:

- RD**–remote driver
- BLA/RD**–remote driver with ball aligner. Pipe length (in inches): _____
- BLA**–pipe mount. Pipe length (in inches): _____
- RBRD**–red braided cord. Length (in inches): _____
- XP**–extra pendant. Cord length (in inches): _____
- BTRAXW**–Traxon Light Drive, white* (order separately) Enter quantity: _____

CONSTRUCTION

- Matte white acrylic diffuser.
- cUL listed for dry locations only.

CANOPY

- **W**–white or **S**–silver, with matching cord.
- Standard mount is 8 ft. adjustable power cord. Order **XP** for extra pendant length.
- Hard stem also available. Order **BLA**.
- See page 3 for additional mount and canopy information.

WHITE LEDs

- Nichia Corp. NFSL757 tight bin chips on aluminum clad boards. 90 CRI.
- **W30** (3000K), **W35** (3500K), and **W40** (4000K) white color temperatures.
- Drivers are programmable constant current, 0–10V, 1% dimming, standard.

CUSTOM LUMEN

OUTPUT REDUCTION

- Factory set custom reduced-lumen output driver configuration. Order **XL**.
Specify lumens.

COLOR LEDs

- **Red**, **Blue** or **SQ**–RGB flexible 5050 tapelights.
- Constant voltage drivers are 12V for single color, 24V for RGB sequencer.
- RGB sequencer requires **BDMXMOD** DMX 512 interface.
- Optional DMX wall box control offered separately (see Traxon, page 2.)

LEDs, WHITE

Model	Length
6307	2 ft.
6308	3 ft.
6309	4 ft.

Specify LED color:

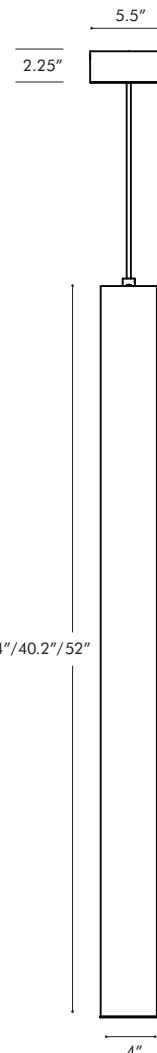
- W30**–White (3000° K)
- W35**–White (3500° K)
- W40**–White (4000° K)

LEDs, COLOR

Model	Length	Red/Blue Watts	RGB Watts
6307	2 ft.	18	36
6308	3 ft.	27	54
6309	4 ft.	36	72

Specify LED color:

- SQ**–RGB sequencer
- Red**
- Blue**



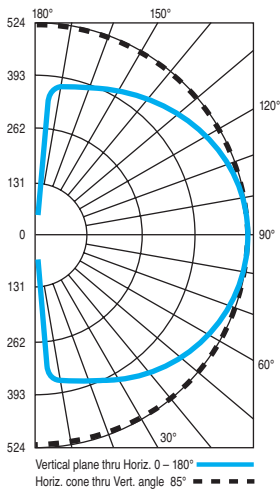
BURBANK,
CALIFORNIA,
91505
WWW.
DELRAY
LIGHTING.
COM

4 FT. LED

6309.W35



CP DISTRIBUTION



COEFFICIENTS

% CEILING 80 (20% FLOOR)			
% WALL	70	50	30
0	107	107	107
1	93	87	81
2	83	73	65
3	75	63	54
4	68	55	45
5	62	48	39
6	56	43	34
7	52	38	29
8	48	35	26
9	45	31	23
10	42	29	21

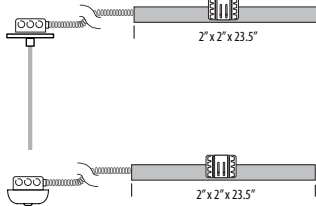
NOTES

6309.W35 - 4 ft.
3500° K white LED
Delivered lumens: 4,207
CRI: 90.0
R9 ≥ 50.0

MOUNT OPTIONS - 4" SLIM TUBES

REMOTE DRIVER

Install driver enclosure (supplied) maximum 18 ft. from fixture; must remain accessible.
Order **RD**.



With ball aligner, order **BLA/RB**.

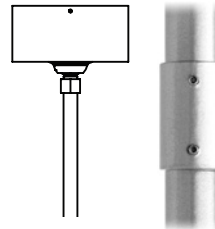
NOTE: Multiple drivers must be mounted no less than 4 inches apart side-by-side, and 1 inch apart end-to-end, to avoid overheating.

PIPE MOUNT

Order **BLA** mount for 3/8" IPS pipe. Length must be specified. Includes ball aligner canopy rated for 75 lbs. and mounts to standard J-boxes. Not for windy locations.

Pipe longer than 8 ft. will be shipped in two pieces—one 8 ft. section plus a second section for the balance—supplied with a painted, threaded pipe coupler, with set screws.

Ball aligner. Order **BLA**.



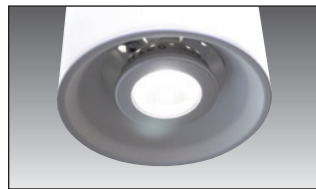
WHITE LED WATTS / LUMENS

Length	Watts	Delivered Lumens
2'	21.6	2,104
3'	32.0	3,116
4'	43.2	4,207

MR16 DOWNLIGHT

B4MR16LED—4" downlight

- 9W max.
- Uses LED MR16, DC 12V, GU5.3 lamps (by others).
- Downlight does not dim.



RED BRAIDED CORD

Red braided power cord. Order **RBRD**.



ACRYLIC DIFFUSER CLEANING

Warning: Do not clean with ammonia based cleaners (e.g. Windex®). Use only water or cleaners specifically formulated for cleaning plastics.

LED OPTIONS

DIMMING DRIVERS

120/277V, 50/60 Hz.

STANDARD DIMMING

Programmable, 0–10V, dims to 1%.

LUTRON DIMMING DRIVERS

BDIM-W9

- Lutron Hi-Lume L3DA Series, 3-wire
- Dims to 1%

BDIM-W11

- Lutron EcoSystem LDE14 Series
- Dims to 1%
- Fade to off.

RGB OPTIONS

BDMXMOD

- Osram part no. OTDMXRGB supplied.
- DMX control interface for RGB LED.
- Provides DMX control with protocols that meet USITT DMX-512A or DMX512 (DIN 56930-2). No converter is required. DMX controls by others.
- A second 4-conductor control cable to fixture canopy is supplied.

TRAXON LIGHT-DRIVE RGB

(order separately)

BTRAXW—white faceplate

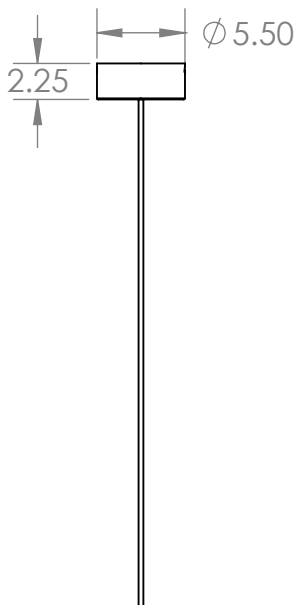
- Standalone, wall-mounted (12V power supply included) DMX controller for RGB LED that provides direct access to fixtures.
- Tune color and brightness with the Light-Drive wheel.
- Fully dimmable white mode button.
- See www.traxon-usa.com for details.



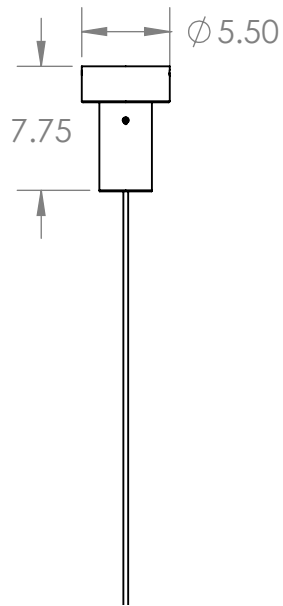
6300 SLIM TUBES – LED CANOPY DIMENSIONS

PENDANT STANDARD

No Downlight

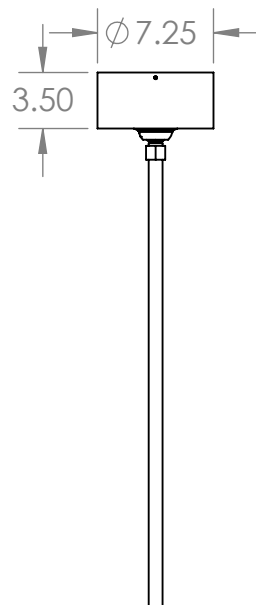


With Downlight



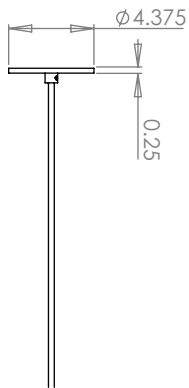
PIPE MOUNT WITH SWIVEL CANOPY

With or Without Downlight

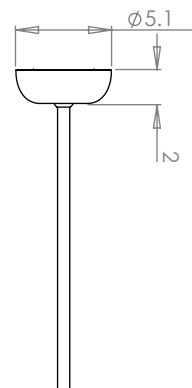


REMOTE DRIVER OPTION – RD & BDMXMOD

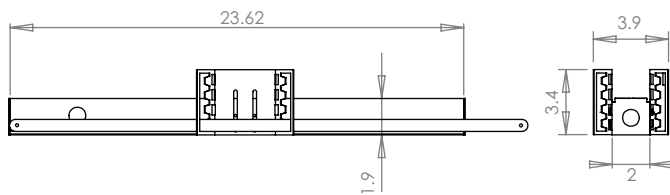
Pendant



Pipe Mount



Remote Driver Housing



Adjustable bar hanger brackets are removable.