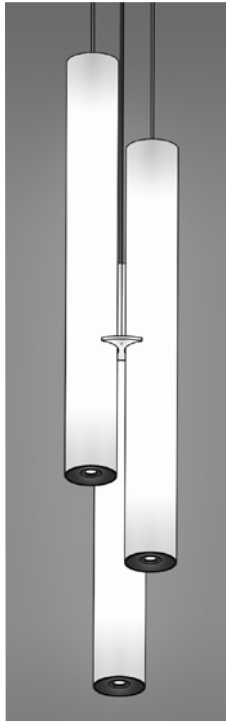


## 4" LED 3-TUBE CLUSTER WITH DOWNLIGHTS

**DELRAY**  
LIGHTING  
INCORPORATED

6300-4" CLUSTERS



**TYPE:**

**PROJECT:**

**ORDER NUMBER:**

Model#	Lengths	Finish	LEDs	Dimming	Downlight
<b>B634LC</b>	<b>333</b>	<b>S</b> –Silver	<b>Red</b>	<b>BDMXMOD</b>	<b>B4MR16</b>
	<b>334</b>	<b>W</b> –White	<b>Blue</b>		
	<b>444</b>	<b>K</b> –Black	<b>SQ</b> –RGB		
			<b>W30</b>	<b>BDIM-W1</b>	
			<b>W35</b>	<b>BDIM-W2</b>	
			<b>W40</b>	<b>BDIM-W11</b>	

**Example:**

B634LC	444	S	W35	BDIM-W2	B4MR16
--------	-----	---	-----	---------	--------

**Other Options:**

- RD**–remote driver
- BLA/RD**–remote driver with ball aligner
- XP**–extra pendant length (inches): \_\_\_\_\_
- BTRAXW**–Traxon Light Drive, white\* (order separately) Enter quantity: \_\_\_\_\_

### CONSTRUCTION

- Matte white acrylic diffuser.
- Clear acrylic collar maintains tube alignment and prevents inter-tube collision. (See back page for details.)
- cUL listed for dry locations only.

### CANOPY

- **W**–white, **S**–silver, or **K**–black, with matching cord.
- Standard mount is 8 ft. adjustable aircraft cable power cord. Order **XP** for extra pendant length.
- Hard stem also available. Order **BLA**.

### LED DRIVERS

- Order **BDIM (W1, W2, or W11)** for dimming; **RD** for remote in accessible ceilings or panels.
- Emergency not available. If EM is required, use inverter (by others).
- Standard color LED options include **Red** and **Blue**, as well as **SQ**–RGB sequencing, controlled with a DMX 512 interface (**BDMXMOD**). Optional wall box control offered separately (see Traxon, back page.)
- Color LED drivers and DMX modules mounted inside 3" diameter, 19" long, tube housing at ceiling. Mounts to all standard J-boxes.
- For DMX wall box control options are available (see Traxon, next page).
- White LED standard and dimming drivers mounted inside 3" diameter, 12" long tube housing at ceiling. Mounts to all standard J-boxes.

### LEDs, color

- Flexible 5050 universal voltage LED tape light.
- **SQ**–RGB = 24V. Single color (**Red** or **Blue**) = 12V.

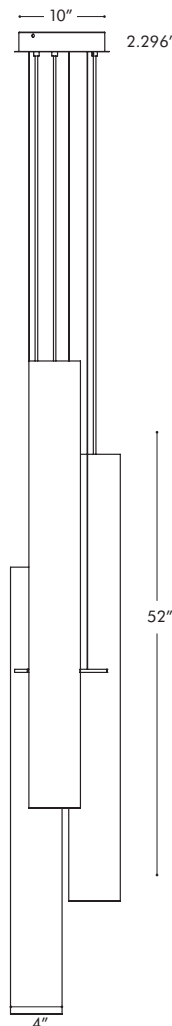
### LEDs, white

- Nichia Corp. NFSL757 linear board chips, available in white color temperatures of **W30** (3000° K), **W35** (3500° K), and **W40** (4000° K).

### OPTIONAL DOWNLIGHT

- Order **B4MR16**.
- Uses LED MR16, 9W, DC 12V, GU 5.3 lamps (by others).
- Downlight does not dim.

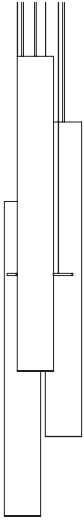
### B634LC444



BURBANK,  
CALIFORNIA,  
91505  
WWW.  
DELRAY  
LIGHTING.  
COM

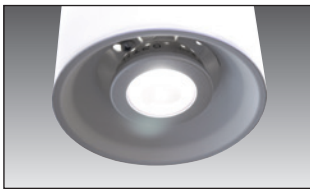
## LED

**B636LC444**

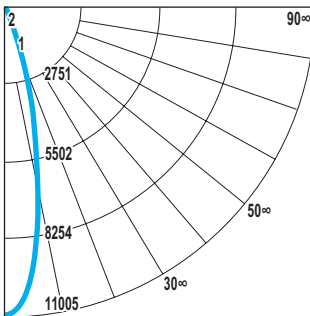


**MR16**

**B4MR16**—4" downlight



**MR16 CP DISTRIBUTION**



## 6300 - 4" 3-TUBE LED CLUSTER OPTIONS

### DIMMING DRIVERS

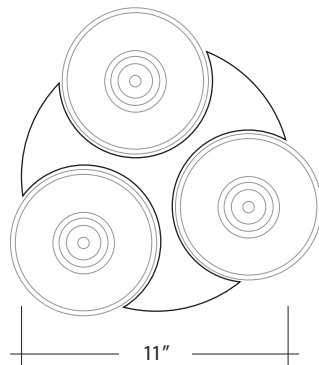
- For white LEDs only.
- BDIM-W1**
  - 0–10V dimming to 10%.
  - Utilizes 100W/24V, 0–10V 120/277 constant voltage driver.
  - Use with 0–10V, purple/gray wire analog dimmers; with low end trim pot, and adjust low end to above flicker threshold.

- BDIM-W2**
  - 0–10V dimming to 1%.
  - System utilizes 100W/24V, 120/277 constant voltage driver, with the Eldo LIN211D1-LN module.
  - Required for use with digital architecture/networking systems like Acuity nLight, Eaton Greengate, and similar management systems.

- BDIM-W11**
  - Lutron LD3096W24U dimming driver module.
  - 0.1% dimming and fade-to-off, with Lutron dimming systems.
  - For remote driver install only.

### TUBE COLLAR

Clear acrylic collar maintains alignment and spacing of tubes.



### ACRYLIC DIFFUSER CLEANING

**Warning:** Do not clean with ammonia based cleaners (e.g. Windex®). Use only water or cleaners specifically formulated for cleaning plastics.

### RGB INTERFACE CONTROL OPTIONS

#### BDMXMOD

- Osram part no. OTDMXRGB supplied.
- DMX control interface for RGB LED.
- Provides DMX control with protocols that meet USITT DMX-512A or DMX512 (DIN 56930-2). No converter is required. DMX controls by others.
- A second 4-conductor control cable to fixture canopy is supplied.

#### TRAXON LIGHT-DRIVE RGB (order separately)

- BTRAXW**—white controller
  - Standalone, wall-mounted (12V power supply included) DMX controller for RGB LED that provides direct access to fixtures.
  - Tune color and brightness with the Light-Drive wheel.

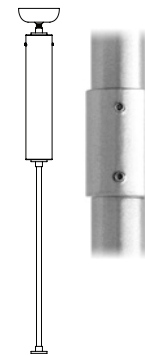
- Two sequence modes enable continuous replay of all saved color settings, as well as a preset color-phase function, which can be adjusted in replay speed.
- Fully dimmable white mode button.
- See [www.traxon-usa.com](http://www.traxon-usa.com) for details.

### MOUNT OPTIONS

Order **BLA** mount for 3/8" IPS pipe. Length must be specified. Includes ball aligner canopy rated for 75 lbs. and mounts to standard J-boxes. Not for windy locations.

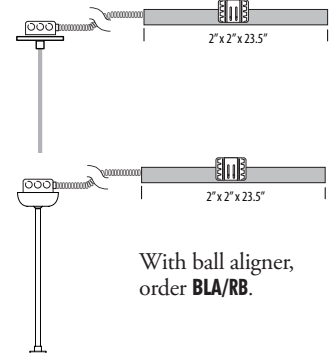
Pipe longer than 8 ft. will be shipped in two pieces—one 8 ft. section plus a second section for the balance—supplied with a painted, threaded pipe coupler, with set screws.

Ball aligner. Order **BLA**.



### REMOTE DRIVER

Install driver enclosure (supplied) maximum 18 ft. from fixture; must remain accessible. Order **RD**.



Max. Wiring Distance (at full load)

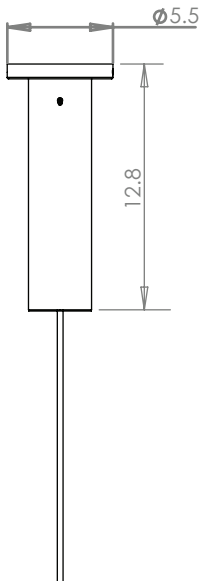
Wire Size (AWG)	Distance (ft.)
18	18
16	29
14	46
12	71
10	120

**NOTE:** Multiple drivers must be mounted no less than 4 inches apart side-by-side, and 1 inch apart end-to-end, to avoid overheating.

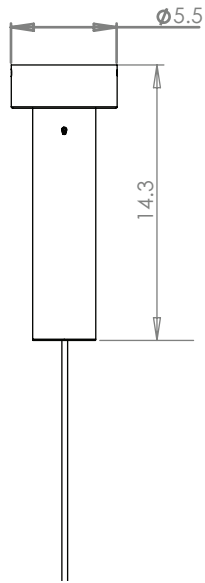
# 6300 SLIM TUBES – LED CANOPY DIMENSIONS

## PENDANT STANDARD

No Downlight

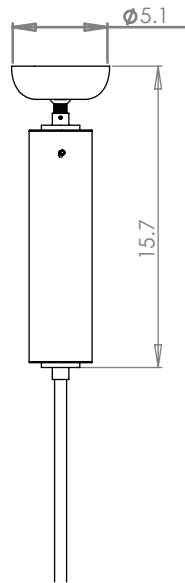


With Downlight

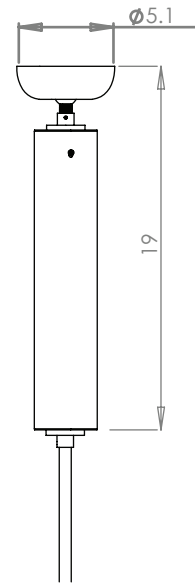


## PIPE MOUNT WITH SWIVEL CANOPY

No Downlight

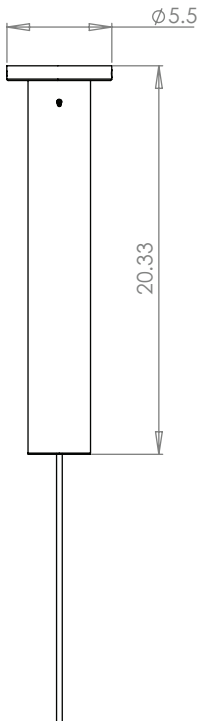


With Downlight

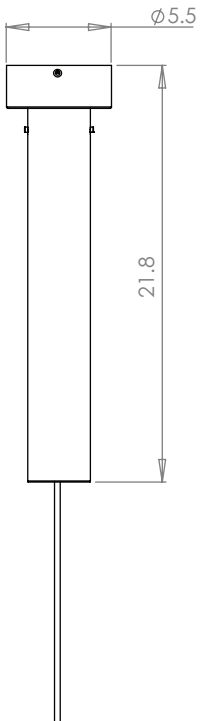


## PENDANT WITH DMX

No Downlight

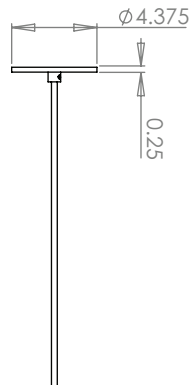


With Downlight

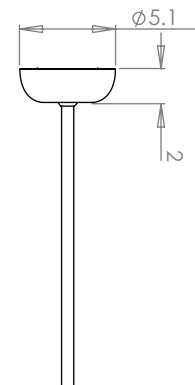


## RD – REMOTE DRIVER OPTION

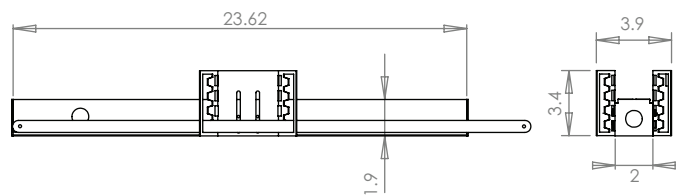
Pendant



Pipe Mount



Remote Driver Housing



Adjustable bar hanger brackets are removable.