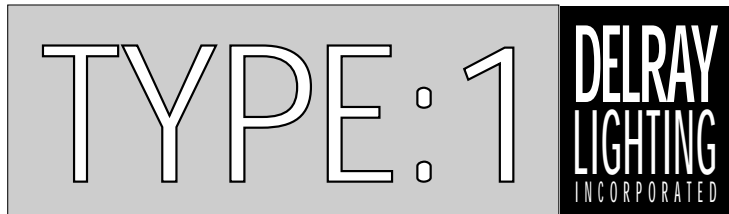
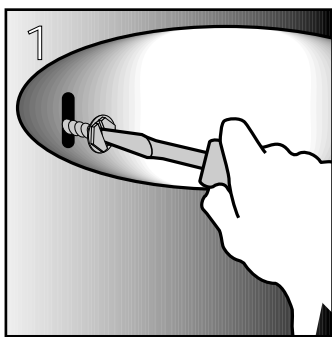
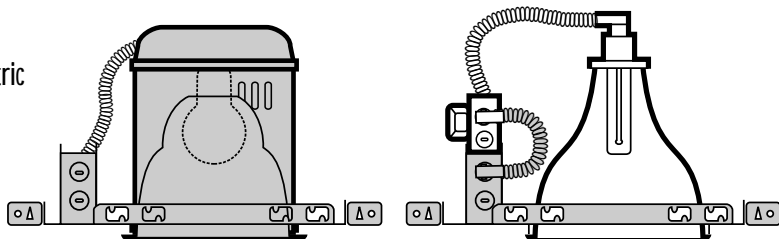


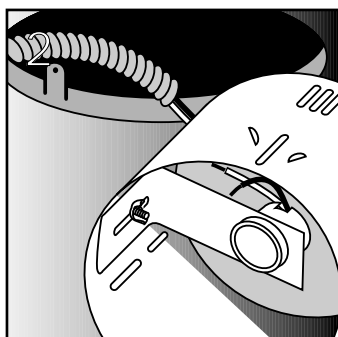
Compact Fluorescent Remodel Downlight Installation Instructions



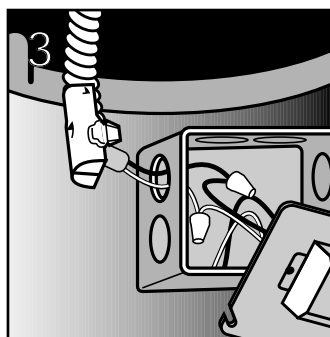
For white can models like Halo H7, Capri R10, Progress P7, Marco MX7 and other similar models. **WARNING:** Risk of fire or electric shock. Install this kit only in a fixture that has the construction features shown in these installation instruction drawings. See back page for listing of U.L. Classification



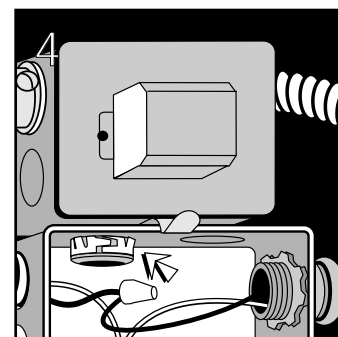
1
Unscrew mounting bolts and remove can



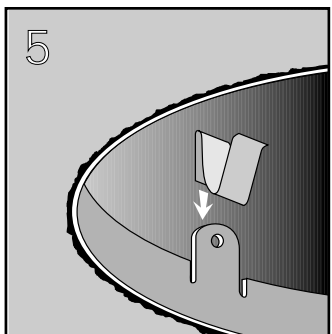
2
Carefully cut socket wires and detach power feed from can



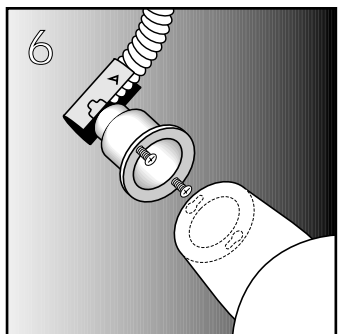
3
Attach power feed to ballast assembly and wire-up



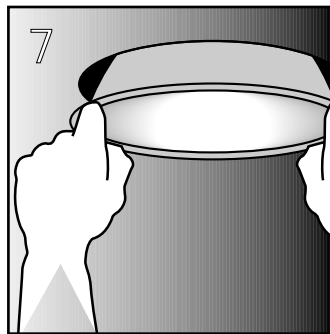
4
Connect ballast assembly to J-box for support, use box connector



5
Snap on MC1 spring clips to mounting frame screw holes

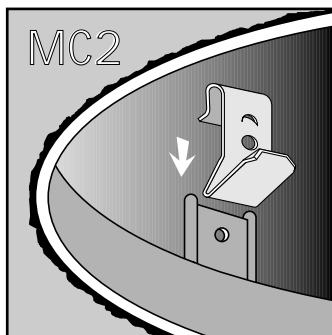


6
Attach reflector to lamp holder by keyhole slots and tighten screws

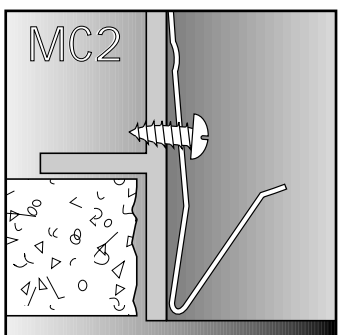


7
Slide reflector into frame, insert proper lamp and check operation

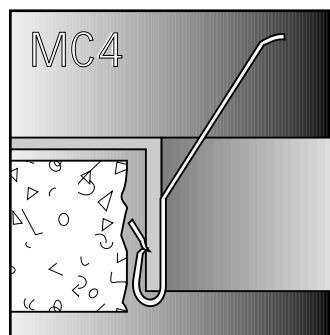
Note:
The existing fixture you are retro-fitting may require other clip options. If you have any problem with the MC1 clip, please study the following clip options to determine the best clip



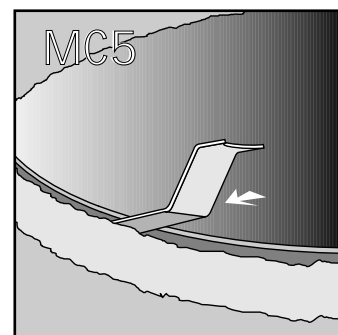
MC2
Clip fits directly on mounting post, for die cast plaster frames



MC2
The MC2 clip can also be screwed into side of frame



MC4
Clip mounts under mounting frame collar



MC5
For frames with no collar, clip slides between frame and ceiling

**FIXTURE CONVERSION, RETROFIT CLASSIFIED BY UNDERWRITERS LABORATORIES INC.®
FOR USE WITH IDENTIFIED FIXTURES ONLY**

DELRAY	LIGHTOLIER	HALO	MARCO	PRESCOLITE	PROGRESS	OMEGA	CAPRI	E. PRICE	K. VERNON	JUNO	KIRLIN	LITHONIA
3" RV3109 RV3113	3"	3" H99 H1499 H7140 H7520	3" MX4 V100E101 D101	3" 1204	3" P16 P30 P6917 P6921 P6922	3" C1010 LV103	3" AE09X RX43 LV1EX	3" A1914 DL20	3" C7300	3" TC1 TC14 TC1	3"	3" MB1 MC1 ME1
4" RV4113 RV4118 RV4126 RV4132	4" 7036 7053 7057 7058 7701 8053	4" H7400 H7410 H7500	4"	4" 20HF 77	4"	4" LICM JQ1 JC1 JB1 JXB1 JX1	4"	4"	4" B7219	4" TC44	4"	4" JB1 JC1 JO1 JXB1 JX1 LICM
5" RV5109 RV5113 RV5118 RV5126 RV5132 RH5113 RH5118 RH5126	5" 7780	5" H43	5"	5" 29H 1054 1212 1220 1222 1252 1260	5" P10 P20 P35 P6916	5" C3212 C3512 C3533 C3543 E4300	5" ADX6 A15X	5" 38/5AA A19/5 A19/55 AR/4 DL38/6 MR/4	5" C7319 E7519	5" TC20 TC919	5"	5" A5 AZ6 JE1 LPJ
6" RV6109 RV6113 RV6118 RV6126 RH6209 RH6213 RH6218 RH6226 RW6209 RW6213 RW6218 RW6226	6" 7029 7054 7059 7280 7284 7705 7760 7771 7774	6" H7 H27 H44 H7LUT H7601 H7620 M7600	6" D201 D202 E201	6" 39H 1058 1224 PBX	6"	6"	6" AE60X AE01X AE11X AE75X LV10TX R10 RMA100	6" A21/6 A21/65 DL38/6	6" C7319 E7519	6" TC2 TC906 TC920	6"	6" A6 D6JE LICJ LOJ R52 RB1 RB3 RC1 RO1 RX1 RX2
7" RV7109 RV7113 RV7118 RV7126 RH7209 RH7213 RH7218 RH7226 RW7209 RW7213 RW7218 RW7226	7" 1102	7" H500 H600 M700	7" A300 D301 D302 D306 E301 V200 V275 W300	7" 79	7" P6 P7 P8 P21 P36 P6952 P6976 P6995 P6996	7" C4213 C4503 EY4000	7" LV3TX LV4TX	7" DL30 DL/38/40	7" B7224 D7424 D7455	7" TC45 TC46	7"	7" 79
7.5" RH75209 RH75213 RH75218 RH75226 RH75232	7.5" 7032 7042 7055 7060 7709 7776 33121 33923	7.5" H7800 H7801 H7802 H7840 H7901 H7940 M7800	7.5" D401 E300 E401 R201	7.5" 1060	7.5" P19	7.5" C5000	7.5" AD8X AE03 AE14X AE85X	7.5" A21/7 A23/7 A25/7	7.5" D7447	7.5" H708 T906 TC908 TC925	7.5"	7.5" 1060
8" RH8209 RH8213 RH8218 RH8226 RH8232	8" 7707	8" H42 H46	8" A504 A602 D401 D402 D408 E400 W400	8" 84	8"	8" C5014 C5023 C5025 C5084 C5504 C5515	8" A15X	8"	8"	8" TC5 TC940	8"	8"
9" RH9209 RH9213 RH9218 RH9226 RH9232	9" 33013 34000	9" M7010 M7011	9"	9"	9"	9" C7552 C7553 C7562 C7563 C7573	9"	9"	9"	9"	9"	9"

WARNING Risk of fire or electric shock. Reflector kit installation requires knowledge of fluorescent lighting fixture electrical systems. If not qualified, do not attempt installation. Contact a qualified electrician.

1. To ensure the success of the installation, be sure to read these instructions and review the diagram thoroughly before beginning.
2. All electrical connections must be in accordance with local codes, ordinances or the National Electrical Code. If you are unfamiliar with methods of installing electrical wiring, secure the services of a qualified licensed electrician.
3. Before starting the installation, disconnect the power by turning off the circuit breaker or by removing the fuse at the fuse box. Turning the power off using the light switch is not sufficient to prevent electrical shock.

NOTE: The important safeguards and instructions appearing in this manual are not meant to cover all possible conditions and situations that may occur. It must be understood that common sense, caution and care are factors which cannot be built into any product. These factors must be supplied by the person(s) caring for and operating the fixture. Check the contents of the box. You should receive:

- Wiring harness consisting of J-box with ballast and socket cap.
- Wire connectors, flex connector, J-box connector
- Reflector
- Mountig Clips (optional)

Wire the luminaire following the wiring diagram on the ballast or inside the box. Use U.L. Listed wire connectors suitable for the size, type and number of conductors. No loose strands or loose wires should be present. Secure the wire connectors with U.L. listed electrical tape and wire nuts. Install the lightbulbs (not included). Refer to the relamping label located on the reflector for correct lamp wattage - Do not exceed recommended wattage. Restore electricity and check your new lighting fixture.