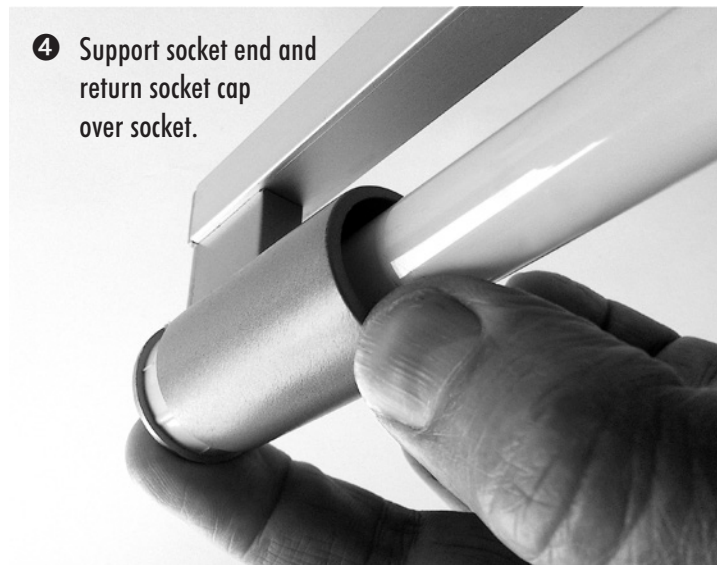
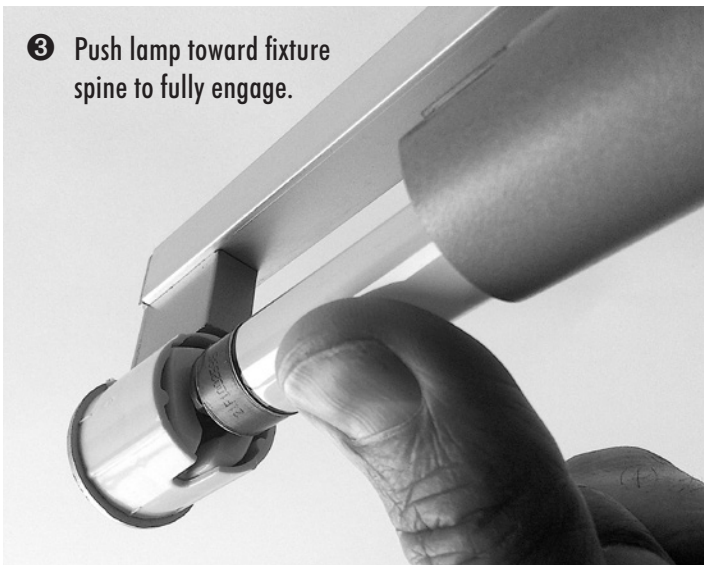
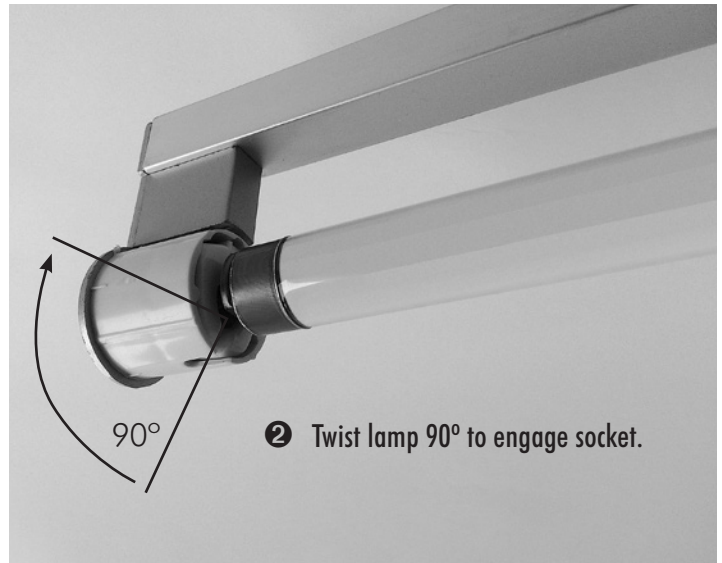
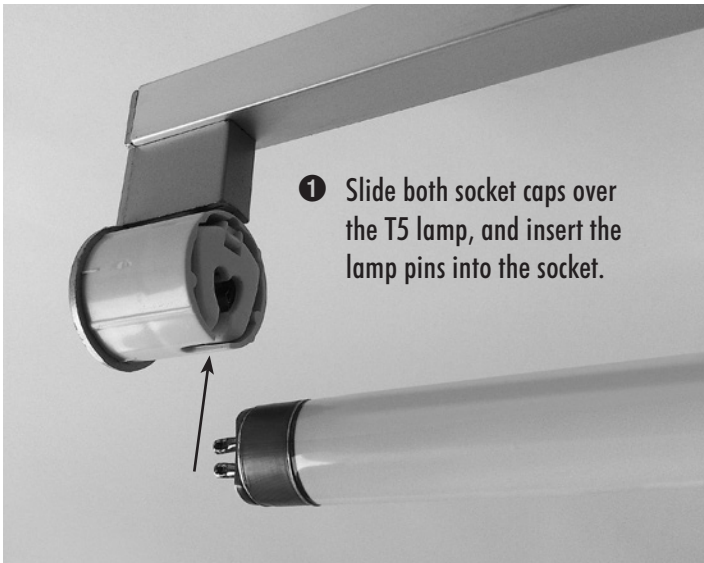


**WARNING:** Disconnect main power at the source prior to installation! Fixture must be installed by a qualified electrician.

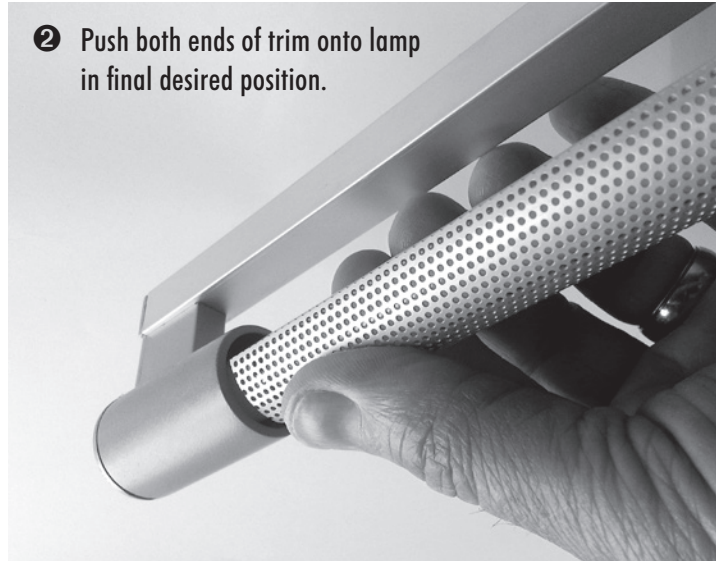


**WARNING:** Disconnect main power at the source prior to installation! Fixture must be installed by a qualified electrician.

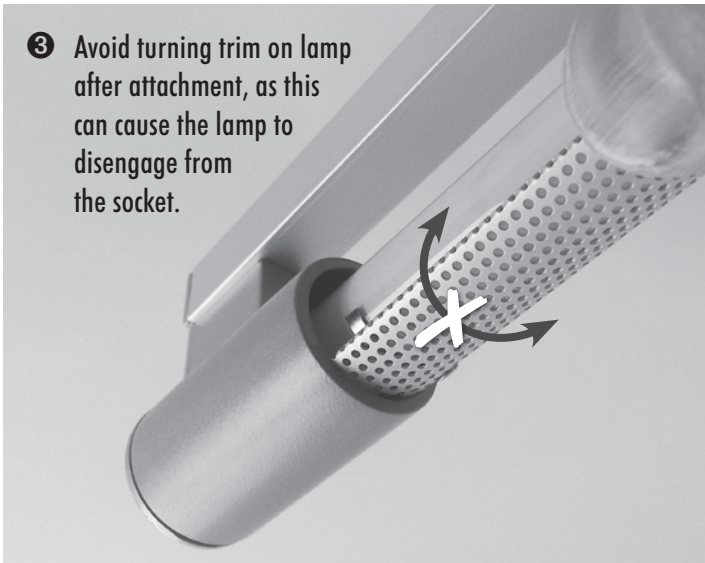
- ❶ Care must be taken to install trim without unseating lamp in socket.



- ❷ Push both ends of trim onto lamp in final desired position.



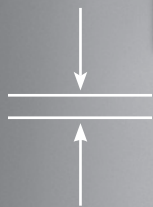
- ❸ Avoid turning trim on lamp after attachment, as this can cause the lamp to disengage from the socket.



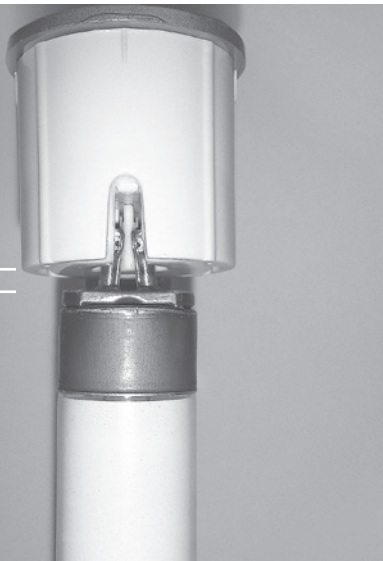
If lamp issues continue, confirm that the gap between lamp and socket is within tolerance shown below, left.

Also confirm that neither socket contacts nor lamp pins are damaged. The interior socket contacts should look like those shown below, right. If bent or dislodged, repairs must be made.

Lamp/socket gap should be no more than 5/64" (0.08 mm).



If the gap is too large, the fixture may be bent or defective.



Lamp pins should nest securely between the two socket contacts.

Though lamp may light with the pins touching the bottom of the contacts, it could cause arcing and lamp failure.

