

# BIG LIGHT 6300

## Installation & Service Instructions

Installation ou de montage

**WARNING:** disconnect main power at the source prior to installation!

*Only qualified electricians should install Delray Lighting products.*

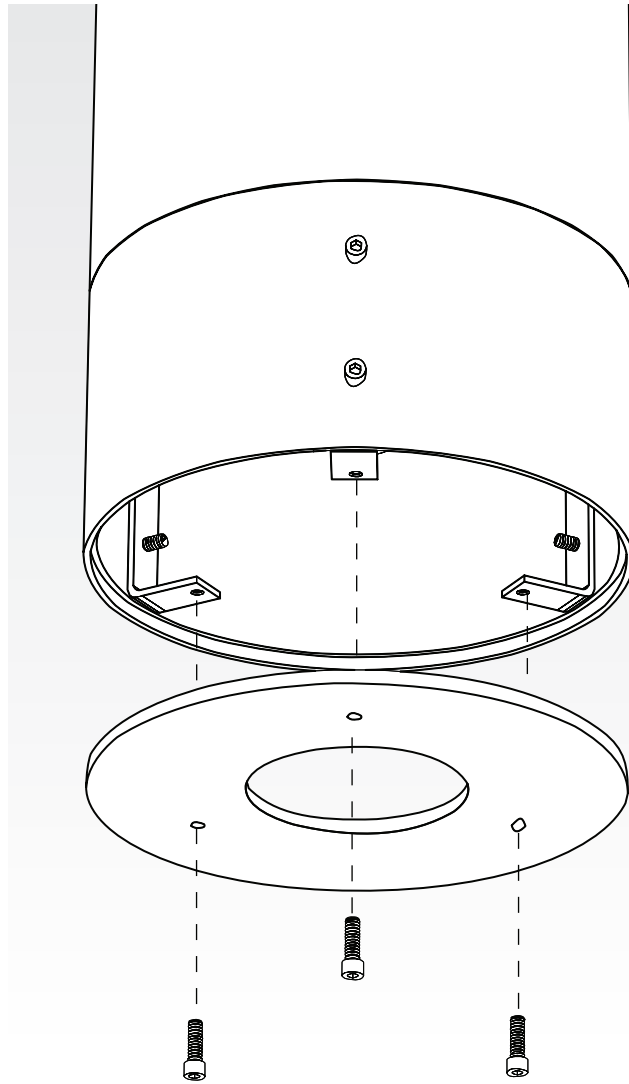
### SERVICE

PAR lamps may be changed without removal of the bottom cover. For T8 lamp or ballast service, remove three screws of bottom cover plate as shown below.

**NOTE:** Aircraft cable suspension is not recommended for outdoor use, where fixture will be exposed to water, or subject to wind oscillation. Avoid use near HVAC vents and in environments with corrosive chemical vapors, such as swimming pools.

### DIFFUSER CLEANING

**Warning:** Do not clean with ammonia based cleaners (e.g. Windex®). Use only water or cleaners specifically formulated for cleaning plastics.



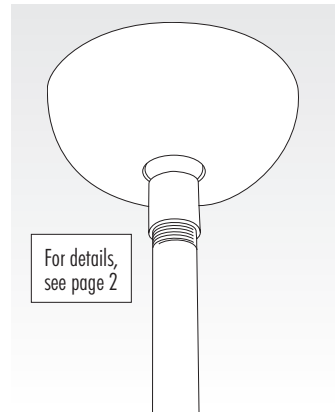
### BALLAST REMOVAL

Following removal of bottom cover, metal halide and fluorescent ballasts may be accessed by removing two additional screws (as shown, right) and sliding out ballast tray from the center tube.

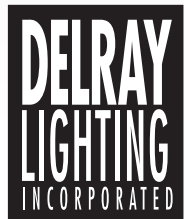
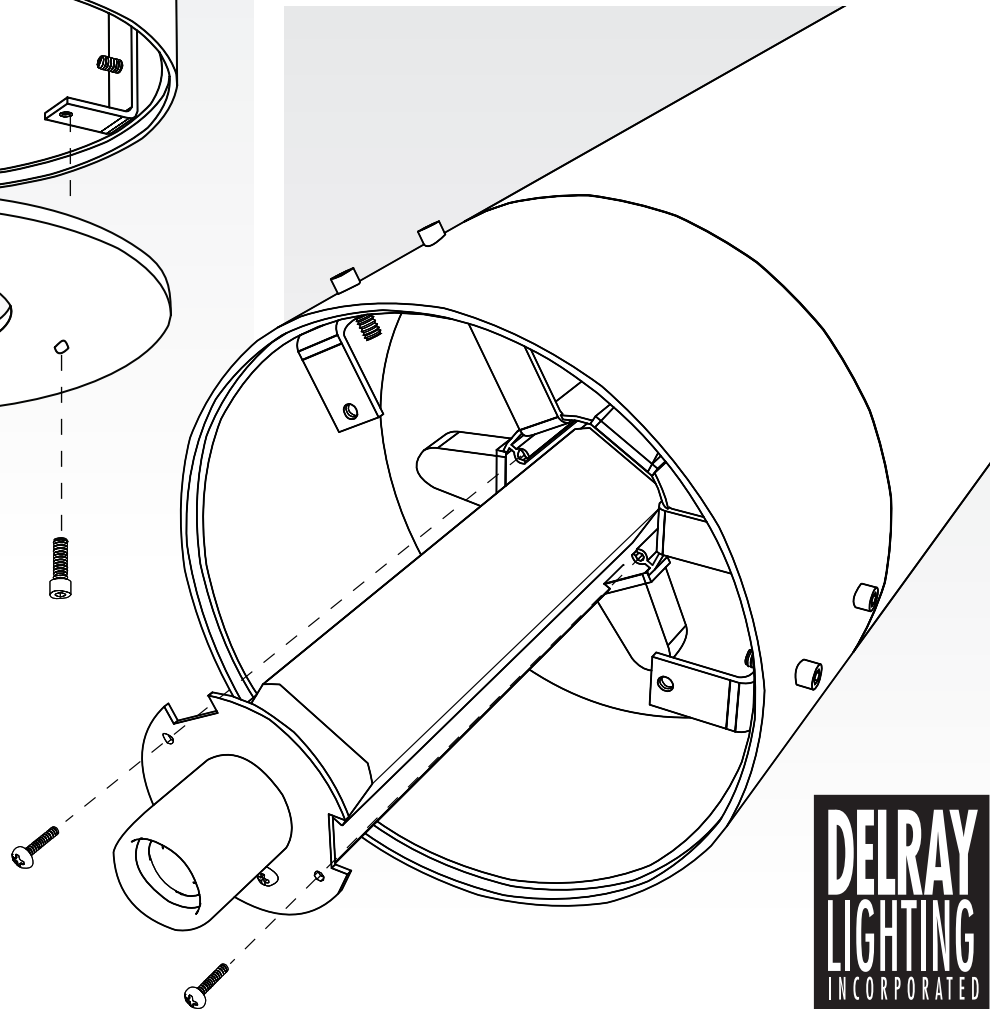
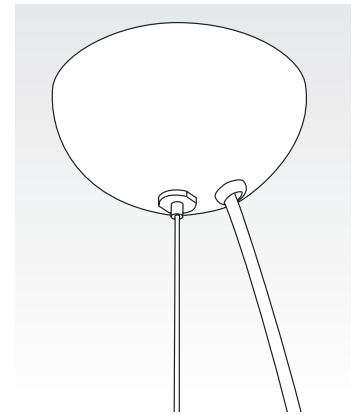
### METAL HALIDE BALLASTS

MH ballasts are located in the top portion of the fixture.

### PIPE MOUNT



### CABLE MOUNT



NOV 2010